

# Old Towne Grayson

Space Available in Heart of Grayson  
Features National and Stable Tenant Mix



**1950 Grayson Hwy Suite 120, Grayson, GA 30017**

**FOR LEASE**

- Built in 2009, this 13,856 SF street retail center has one (1) 1,440 SF space available
- Located along a major retail corridor; across the street from Kroger Shopping Center and next to AutoZone, with more than 44,000 vehicles travel along this busy corridor every day
- Located at a signalized intersection with easy access in a dense residential area population of 155,000 in 5 mile radius
- Grayson, Georgia features some of the highest incomes in Gwinnett County



### Demographics

	1-Mile Radius	3-Mile Radius	5-Mile Radius
Total Population	6,370	53,143	154,923
Projected Growth 2017-2022	9.58%	9.96%	9.59%
Total Households	2,147	17,410	50,260
Average Household Income	\$84,572	\$73,838	\$79,810
Average Age	36.90	36.40	35.90

### Traffic Count

**44,100** Grayson Hwy

### FOR MORE INFORMATION, CONTACT:

Adam Hale  
404.281.2788 Cell  
678.894.1580 Direct  
ahale@haleretailgroup.com

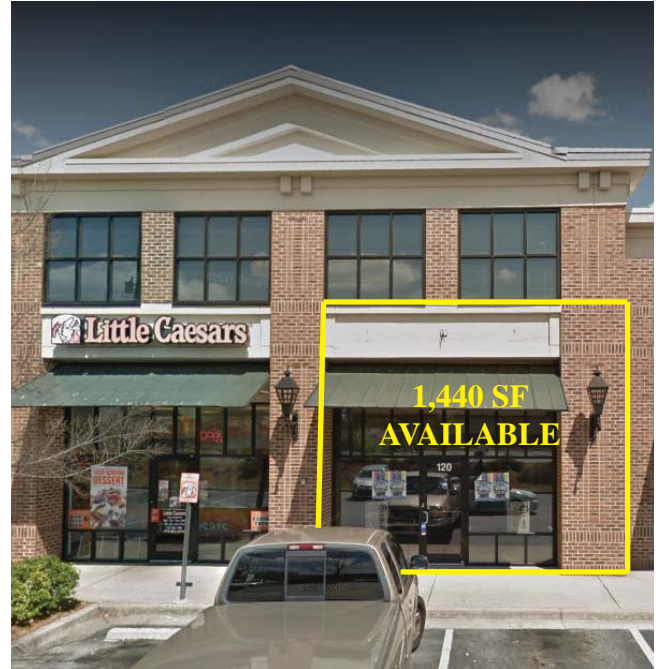
1303 Hightower Trail, Suite 201  
Atlanta, Georgia 30350  
www.haleretailgroup.com  
770.594.1309 Office



# LEASE AT Old Towne Grayson

1950 Grayson Hwy Suite 120  
Grayson, GA 30017

AUTOZONE	LITTLE CAESARS	<b>VACANT 1,440 SF</b>	VAPE SHOP	FRIENDS BAR AND GRILL
----------	----------------	----------------------------	-----------	-----------------------



**FOR MORE INFORMATION, CONTACT:**

Adam Hale  
404.281.2788 Cell  
678.894.1580 Direct  
ahale@haleretailgroup.com

1303 Hightower Trail, Suite 201  
Atlanta, Georgia 30350  
www.haleretailgroup.com  
770.594.1309 Office

