

Pop-Facts Demographics

Title Page

Data Version: 2017 May (Quick Market Insights)

Report Generation Method: Single

Analysis Area: 6230 S NORCROSS TUCKER RD, TUCKER, GA, 30084-1200

Reporting Detail: As Selected

Include Map: Yes

Include Labels: Yes

Map Reporting Detail: As Selected

Base Map Style: Bing Road

Subtotal Method: Equal Ranges

Sort Variable: 2017 Population

Sort Measure: Index

Sort Direction: Descending

Color Scheme: Claritas Standard Theme

Number of Ranges: 5

Include Charts: Yes

Analysis Area Detail: Yes

Report Sections:

Pop-Facts Summary

Pop-Facts Census Demographic Overview

Pop-Facts Demographic Snapshot

Pop-Facts Population Quick Facts

Pop-Facts Household Quick Facts

Pop-Facts Demographic Quick Facts

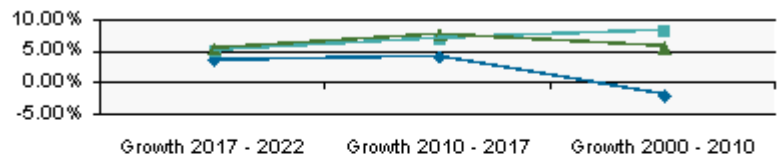
Pop-Facts Demographics

Description	6230 S NORCROSS TUCKER RD, TUCKER, GA, 30084-1200: Radius Analysis Area Group: Radius 1.0 mile(s)		6230 S NORCROSS TUCKER RD, TUCKER, GA, 30084-1200: Radius Analysis Area Group: Radius 3.0 mile(s)		6230 S NORCROSS TUCKER RD, TUCKER, GA, 30084-1200: Radius Analysis Area Group: Radius 5.0 mile(s)	
	Total	%	Total	%	Total	%

Pop-Facts Summary

Population

2022 Projection	22,836		115,889		253,863	
2017 Estimate	22,047		110,329		240,891	
2010 Census	21,193		103,073		223,562	
2000 Census	21,632		95,127		211,667	

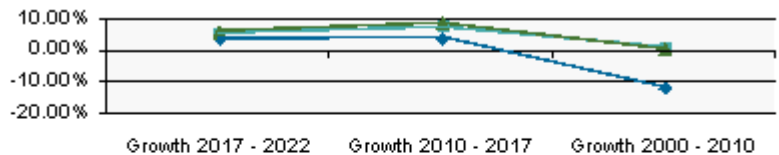


- 6230 S NORCROSS TUCKER RD, TUCKER, GA, 30084-1200: Radius Analysis Area Group: Radius 1.0 mile(s)
- 6230 S NORCROSS TUCKER RD, TUCKER, GA, 30084-1200: Radius Analysis Area Group: Radius 3.0 mile(s)
- 6230 S NORCROSS TUCKER RD, TUCKER, GA, 30084-1200: Radius Analysis Area Group: Radius 5.0 mile(s)

Growth 2017 - 2022		3.58%		5.04%		5.39%
Growth 2010 - 2017		4.03%		7.04%		7.75%
Growth 2000 - 2010		(2.03%)		8.35%		5.62%

Households

2022 Projection	7,158		39,413		90,221	
2017 Estimate	6,914		37,443		85,263	
2010 Census	6,659		34,843		78,406	
2000 Census	7,574		34,582		78,071	



- 6230 S NORCROSS TUCKER RD, TUCKER, GA, 30084-1200: Radius Analysis Area Group: Radius 1.0 mile(s)
- 6230 S NORCROSS TUCKER RD, TUCKER, GA, 30084-1200: Radius Analysis Area Group: Radius 3.0 mile(s)
- 6230 S NORCROSS TUCKER RD, TUCKER, GA, 30084-1200: Radius Analysis Area Group: Radius 5.0 mile(s)

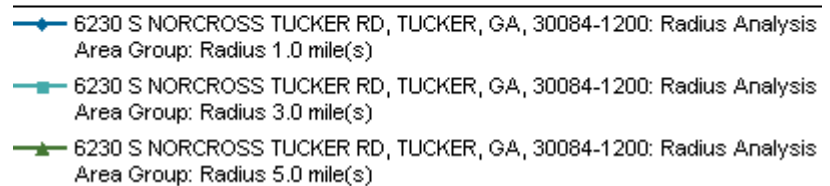
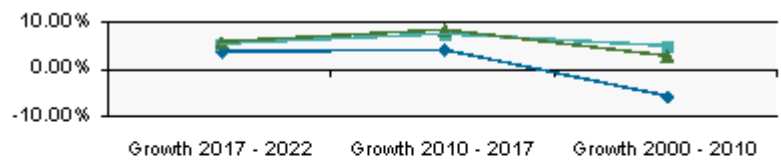
Growth 2017 - 2022		3.53%		5.26%		5.82%
Growth 2010 - 2017		3.82%		7.46%		8.75%

Pop-Facts Demographics

Description	6230 S NORCROSS TUCKER RD, TUCKER, GA, 30084-1200: Radius Analysis Area Group: Radius 1.0 mile(s)		6230 S NORCROSS TUCKER RD, TUCKER, GA, 30084-1200: Radius Analysis Area Group: Radius 3.0 mile(s)		6230 S NORCROSS TUCKER RD, TUCKER, GA, 30084-1200: Radius Analysis Area Group: Radius 5.0 mile(s)	
	Total	%	Total	%	Total	%
Growth 2000 - 2010		(12.08%)		0.76%		0.43%

Family Households

2022 Projection	4,633	25,823	57,652
2017 Estimate	4,473	24,573	54,607
2010 Census	4,304	22,930	50,450
2000 Census	4,570	21,919	49,074



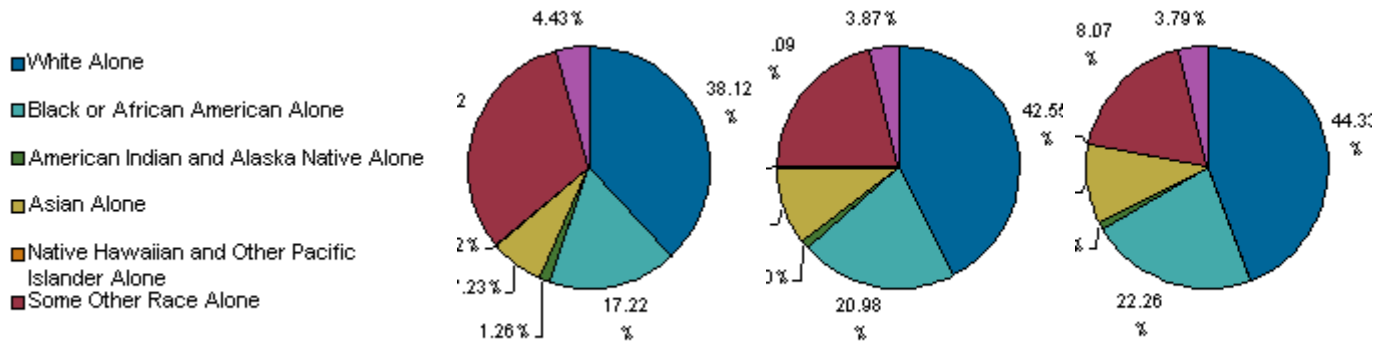
Growth 2017 - 2022		3.57%	5.09%	5.58%
Growth 2010 - 2017		3.94%	7.17%	8.24%
Growth 2000 - 2010		(5.83%)	4.61%	2.80%

Pop-Facts Demographics

Description	6230 S NORCROSS TUCKER RD, TUCKER, GA, 30084-1200: Radius Analysis Area Group: Radius 1.0 mile(s)		6230 S NORCROSS TUCKER RD, TUCKER, GA, 30084-1200: Radius Analysis Area Group: Radius 3.0 mile(s)		6230 S NORCROSS TUCKER RD, TUCKER, GA, 30084-1200: Radius Analysis Area Group: Radius 5.0 mile(s)	
	Total	%	Total	%	Total	%

Pop-Facts Census Demographic Overview

2010 Pop by Single Race Classification	21,193	103,073	223,562
---	---------------	----------------	----------------



Single Race Classification	2010 Pop	%	2010 Pop	%	2010 Pop	%
White Alone	8,079	38.12%	43,857	42.55%	99,106	44.33%
Black or African American Alone	3,650	17.22%	21,627	20.98%	49,767	22.26%
American Indian and Alaska Native Alone	268	1.26%	1,027	1.00%	2,142	0.96%
Asian Alone	1,532	7.23%	10,720	10.40%	23,447	10.49%
Native Hawaiian and Other Pacific Islander Alone	46	0.22%	117	0.11%	247	0.11%
Some Other Race Alone	6,680	31.52%	21,737	21.09%	40,392	18.07%
Two or More Races	938	4.43%	3,989	3.87%	8,462	3.79%

2010 Population by Ethnicity	21,193	103,073	223,562
Hispanic or Latino	12,990	45,052	85,032
Not Hispanic or Latino	8,203	58,022	138,530

2010 Hispanic or Latino Pop by Single-Class. Race	12,990	45,052	85,032
White Alone	5,106	19,000	36,298
Black or African American Alone	244	1,139	2,159
American Indian and Alaska Native Alone	238	854	1,734
Asian Alone	31	123	214
Native Hawaiian and Other Pacific Islander Alone	40	60	124
Some Other Race Alone	6,650	21,532	39,816
Two or More Races	681	2,344	4,688

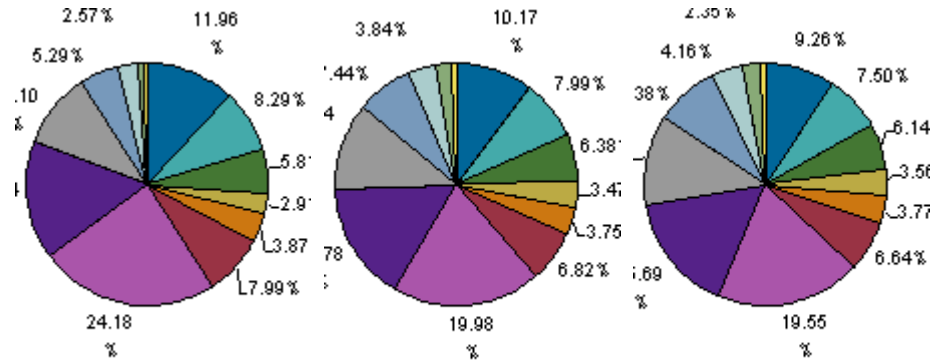
2010 Population by Sex	21,193	103,073	223,562
Male	11,590	53,625	115,616
Female	9,603	49,449	107,946
Male/Female Ratio	1.21	1.08	1.07

2010 Population by Age	21,193	103,073	223,562
-------------------------------	---------------	----------------	----------------

Pop-Facts Demographics

Description	6230 S NORCROSS TUCKER RD, TUCKER, GA, 30084-1200: Radius Analysis Area Group: Radius 1.0 mile(s)		6230 S NORCROSS TUCKER RD, TUCKER, GA, 30084-1200: Radius Analysis Area Group: Radius 3.0 mile(s)		6230 S NORCROSS TUCKER RD, TUCKER, GA, 30084-1200: Radius Analysis Area Group: Radius 5.0 mile(s)	
	Total	%	Total	%	Total	%

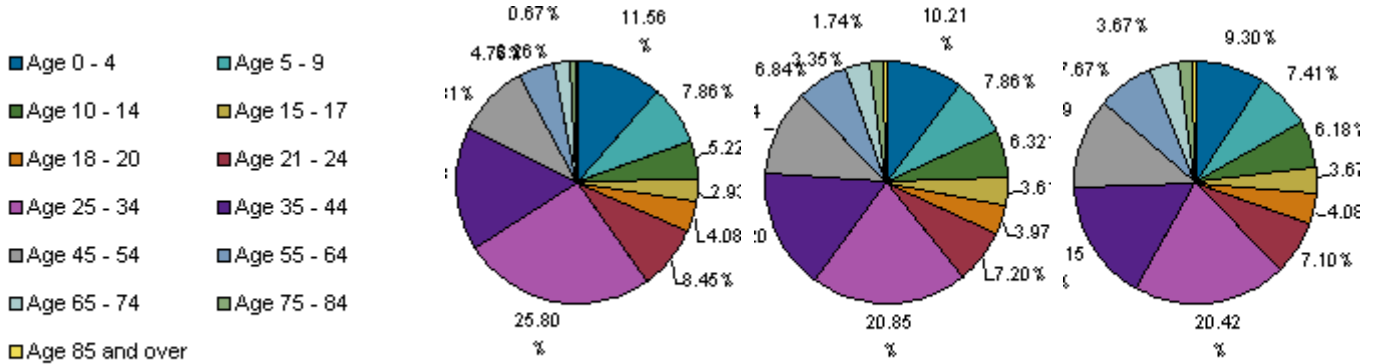
- Age 0 - 4
- Age 5 - 9
- Age 10 - 14
- Age 15 - 17
- Age 18 - 20
- Age 21 - 24
- Age 25 - 34
- Age 35 - 44
- Age 45 - 54
- Age 55 - 64
- Age 65 - 74
- Age 75 - 84
- Age 85 and over



Age 0 - 4	2,535	11.96%	10,485	10.17%	20,691	9.26%
Age 5 - 9	1,758	8.29%	8,238	7.99%	16,760	7.50%
Age 10 - 14	1,232	5.81%	6,575	6.38%	13,726	6.14%
Age 15 - 17	617	2.91%	3,580	3.47%	7,967	3.56%
Age 18 - 20	820	3.87%	3,862	3.75%	8,425	3.77%
Age 21 - 24	1,694	7.99%	7,026	6.82%	14,850	6.64%
Age 25 - 34	5,125	24.18%	20,589	19.98%	43,710	19.55%
Age 35 - 44	3,336	15.74%	16,268	15.78%	35,082	15.69%
Age 45 - 54	2,140	10.10%	12,002	11.64%	27,385	12.25%
Age 55 - 64	1,121	5.29%	7,667	7.44%	18,739	8.38%
Age 65 - 74	544	2.57%	3,960	3.84%	9,291	4.16%
Age 75 - 84	209	0.99%	2,192	2.13%	5,248	2.35%
Age 85 and over	62	0.29%	630	0.61%	1,688	0.76%
Age 16 and over	15,472	73.00%	76,605	74.32%	169,761	75.93%
Age 18 and over	15,051	71.02%	74,196	71.98%	164,417	73.54%
Age 21 and over	14,231	67.15%	70,333	68.24%	155,993	69.78%
Age 65 and over	816	3.85%	6,781	6.58%	16,227	7.26%
2010 Median Age	28.8		30.7		31.7	
2010 Male Population by Age	11,590		53,625		115,616	

Pop-Facts Demographics

Description	6230 S NORCROSS TUCKER RD, TUCKER, GA, 30084-1200: Radius Analysis Area Group: Radius 1.0 mile(s)		6230 S NORCROSS TUCKER RD, TUCKER, GA, 30084-1200: Radius Analysis Area Group: Radius 3.0 mile(s)		6230 S NORCROSS TUCKER RD, TUCKER, GA, 30084-1200: Radius Analysis Area Group: Radius 5.0 mile(s)	
	Total	%	Total	%	Total	%

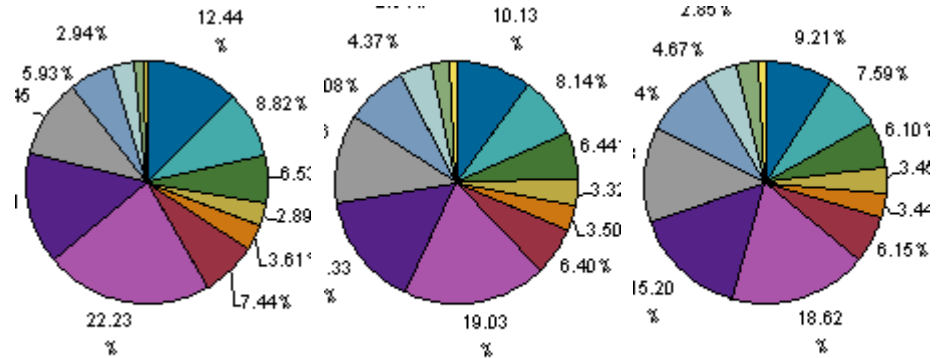


Age 0 - 4	1,340	11.56%	5,473	10.21%	10,750	9.30%
Age 5 - 9	911	7.86%	4,212	7.86%	8,572	7.41%
Age 10 - 14	605	5.22%	3,389	6.32%	7,140	6.18%
Age 15 - 17	340	2.93%	1,936	3.61%	4,246	3.67%
Age 18 - 20	473	4.08%	2,129	3.97%	4,716	4.08%
Age 21 - 24	979	8.45%	3,861	7.20%	8,214	7.10%
Age 25 - 34	2,990	25.80%	11,181	20.85%	23,606	20.42%
Age 35 - 44	1,904	16.43%	8,689	16.20%	18,674	16.15%
Age 45 - 54	1,137	9.81%	6,137	11.44%	13,857	11.99%
Age 55 - 64	551	4.76%	3,669	6.84%	8,873	7.67%
Age 65 - 74	262	2.26%	1,798	3.35%	4,244	3.67%
Age 75 - 84	77	0.67%	935	1.74%	2,168	1.87%
Age 85 and over	20	0.18%	215	0.40%	555	0.48%
2010 Median Age, Male	28.8		30.2		31.0	
2010 Female Population by Age	9,603		49,449		107,946	

Pop-Facts Demographics

Description	6230 S NORCROSS TUCKER RD, TUCKER, GA, 30084-1200: Radius Analysis Area Group: Radius 1.0 mile(s)		6230 S NORCROSS TUCKER RD, TUCKER, GA, 30084-1200: Radius Analysis Area Group: Radius 3.0 mile(s)		6230 S NORCROSS TUCKER RD, TUCKER, GA, 30084-1200: Radius Analysis Area Group: Radius 5.0 mile(s)	
	Total	%	Total	%	Total	%

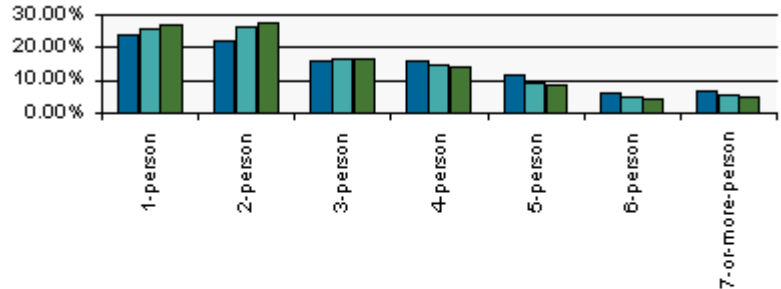
- Age 0 - 4
- Age 5 - 9
- Age 10 - 14
- Age 15 - 17
- Age 18 - 20
- Age 21 - 24
- Age 25 - 34
- Age 35 - 44
- Age 45 - 54
- Age 55 - 64
- Age 65 - 74
- Age 75 - 84
- Age 85 and over



Age 0 - 4	1,195	12.44%	5,012	10.13%	9,940	9.21%
Age 5 - 9	847	8.82%	4,026	8.14%	8,188	7.59%
Age 10 - 14	627	6.53%	3,186	6.44%	6,586	6.10%
Age 15 - 17	277	2.89%	1,644	3.32%	3,721	3.45%
Age 18 - 20	347	3.61%	1,733	3.50%	3,709	3.44%
Age 21 - 24	714	7.44%	3,165	6.40%	6,636	6.15%
Age 25 - 34	2,135	22.23%	9,408	19.03%	20,104	18.62%
Age 35 - 44	1,432	14.91%	7,580	15.33%	16,409	15.20%
Age 45 - 54	1,003	10.45%	5,865	11.86%	13,529	12.53%
Age 55 - 64	569	5.93%	3,998	8.08%	9,865	9.14%
Age 65 - 74	283	2.94%	2,162	4.37%	5,046	4.67%
Age 75 - 84	132	1.38%	1,257	2.54%	3,081	2.85%
Age 85 and over	41	0.43%	414	0.84%	1,133	1.05%
2010 Median Age, Female	28.7		31.3		32.6	
2010 Households by Household Type	6,659		34,843		78,406	
Family Households	4,304	64.63%	22,930	65.81%	50,450	64.35%
Nonfamily Households	2,355	35.37%	11,914	34.19%	27,955	35.65%
2010 Group Quarters Population	7		232		767	
2010 Hispanic or Latino Households	3,059		10,649		20,026	
2010 Households by Household Size	6,659		34,843		78,406	

Pop-Facts Demographics

Description	6230 S NORCROSS TUCKER RD, TUCKER, GA, 30084-1200: Radius Analysis Area Group: Radius 1.0 mile(s)		6230 S NORCROSS TUCKER RD, TUCKER, GA, 30084-1200: Radius Analysis Area Group: Radius 3.0 mile(s)		6230 S NORCROSS TUCKER RD, TUCKER, GA, 30084-1200: Radius Analysis Area Group: Radius 5.0 mile(s)	
	Total	%	Total	%	Total	%



■ 6230 S NORCROSS TUCKER RD, TUCKER, GA, 30084-1200: Radius Analysis Area Group: Radius 1.0 mile(s)
■ 6230 S NORCROSS TUCKER RD, TUCKER, GA, 30084-1200: Radius Analysis Area Group: Radius 3.0 mile(s)
■ 6230 S NORCROSS TUCKER RD, TUCKER, GA, 30084-1200: Radius Analysis Area Group: Radius 5.0 mile(s)

1-person	1,588	23.85%	8,773	25.18%	20,790	26.52%
2-person	1,429	21.46%	9,021	25.89%	21,389	27.28%
3-person	1,060	15.92%	5,606	16.09%	12,563	16.02%
4-person	1,038	15.58%	5,043	14.47%	10,676	13.62%
5-person	738	11.08%	3,110	8.92%	6,344	8.09%
6-person	380	5.70%	1,561	4.48%	3,225	4.11%
7-or-more-person	427	6.41%	1,731	4.97%	3,419	4.36%
2010 Households by Type by Presence of Children	6,659		34,843		78,406	
2010 Fam HHs, Own Kids, Married Couple Fam	1,536	23.07%	8,155	23.40%	17,099	21.81%
2010 Fam HHs, Own Kids, Other Fam HH, Male HHldr	317	4.76%	1,280	3.67%	2,524	3.22%
2010 Fam HHs, Own Kids, Other Fam HH, Female HHldr	706	10.60%	3,336	9.58%	7,095	9.05%
2010 Fam HHs, No Own Kids, Married Couple Fam	990	14.87%	6,667	19.13%	15,983	20.39%
2010 Fam HHs, No Own Kids, Other Fam HH, Male HHldr	398	5.97%	1,537	4.41%	3,383	4.31%
2010 Fam HHs, No Own Kids, Other Fam HH, Female HHldr	357	5.36%	1,955	5.61%	4,366	5.57%
2010 NonFam HHs	2,355	35.37%	11,914	34.19%	27,955	35.65%
2010 Households by Presence of People Under Age 18	6,659		34,843		78,406	
HHs with 1 or More People Under Age 18:	2,931	44.01%	14,281	40.99%	30,027	38.30%
Married-Couple Family	1,642	56.04%	8,638	60.49%	18,129	60.38%
Other Family, Male Householder	408	13.92%	1,629	11.41%	3,311	11.03%

Pop-Facts Demographics

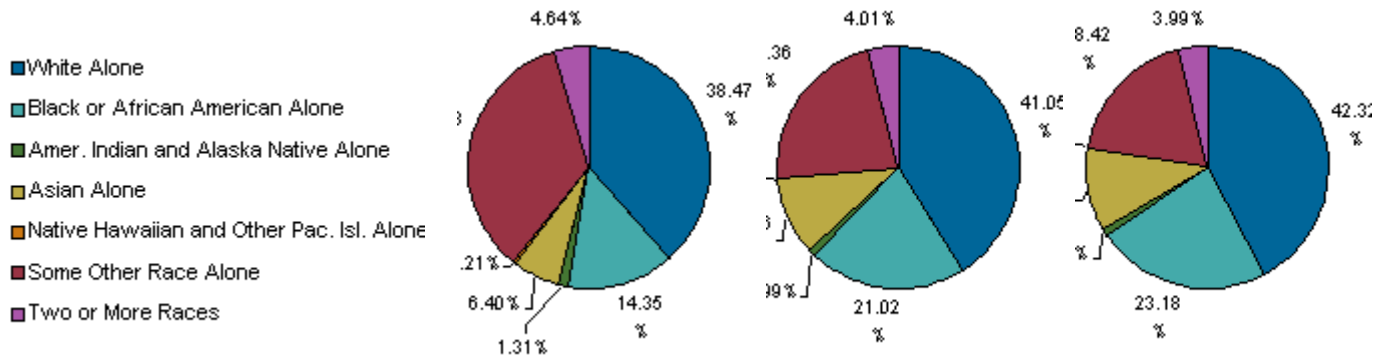
Description	6230 S NORCROSS TUCKER RD, TUCKER, GA, 30084-1200: Radius Analysis Area Group: Radius 1.0 mile(s)		6230 S NORCROSS TUCKER RD, TUCKER, GA, 30084-1200: Radius Analysis Area Group: Radius 3.0 mile(s)		6230 S NORCROSS TUCKER RD, TUCKER, GA, 30084-1200: Radius Analysis Area Group: Radius 5.0 mile(s)	
	Total	%	Total	%	Total	%
Other Family, Female Householder	814	27.76%	3,814	26.71%	8,130	27.08%
Nonfamily, Male Householder	53	1.81%	149	1.04%	335	1.12%
Nonfamily, Female Householder	14	0.46%	51	0.36%	121	0.40%
Households with No People Under Age 18:	3,728	55.99%	20,563	59.01%	48,378	61.70%
Married-Couple Family	884	23.71%	6,184	30.07%	14,953	30.91%
Other Family, Male Householder	307	8.23%	1,188	5.78%	2,596	5.37%
Other Family, Female Householder	249	6.67%	1,477	7.18%	3,331	6.89%
Nonfamily, Male Householder	1,306	35.02%	6,126	29.79%	13,891	28.71%
Nonfamily, Female Householder	983	35.02%	5,588	29.79%	13,607	28.71%
2010 Occupied Housing Units by Tenure	6,659		34,843		78,406	
Owner Occupied	2,423	36.38%	16,528	47.44%	38,652	49.30%
Renter Occupied	4,236	63.62%	18,315	52.56%	39,754	50.70%

Pop-Facts Demographics

Description	6230 S NORCROSS TUCKER RD, TUCKER, GA, 30084-1200: Radius Analysis Area Group: Radius 1.0 mile(s)		6230 S NORCROSS TUCKER RD, TUCKER, GA, 30084-1200: Radius Analysis Area Group: Radius 3.0 mile(s)		6230 S NORCROSS TUCKER RD, TUCKER, GA, 30084-1200: Radius Analysis Area Group: Radius 5.0 mile(s)	
	Total	%	Total	%	Total	%

Pop-Facts Demographic Snapshot

2017 Est. Population by Single-Classification Race	22,047	110,329	240,891
--	--------	---------	---------



Race	1.0 Mile Radius	1.0 Mile Radius %	3.0 Mile Radius	3.0 Mile Radius %	5.0 Mile Radius	5.0 Mile Radius %
White Alone	8,481	38.47%	45,292	41.05%	101,940	42.32%
Black or African American Alone	3,164	14.35%	23,187	21.02%	55,844	23.18%
Amer. Indian and Alaska Native Alone	288	1.31%	1,089	0.99%	2,300	0.95%
Asian Alone	1,411	6.40%	11,538	10.46%	26,565	11.03%
Native Hawaiian and Other Pac. Isl. Alone	46	0.21%	127	0.12%	258	0.11%
Some Other Race Alone	7,635	34.63%	24,667	22.36%	44,380	18.42%
Two or More Races	1,023	4.64%	4,429	4.01%	9,604	3.99%

2017 Est. Population by Hispanic or Latino Origin	22,047	110,329	240,891
Not Hispanic or Latino	7,715	60,655	148,913
Hispanic or Latino	14,332	49,674	91,978
Mexican	8,554	30,366	54,466
Puerto Rican	248	1,110	2,349
Cuban	123	609	1,214
All Other Hispanic or Latino	5,408	17,589	33,948

2017 Est. Hisp. or Latino Pop by Single-Class. Race	14,332	49,674	91,978
White Alone	5,364	20,354	38,716
Black or African American Alone	241	1,213	2,305
American Indian and Alaska Native Alone	260	920	1,874
Asian Alone	39	145	242
Native Hawaiian and Other Pacific Islander Alone	44	67	127

Pop-Facts Demographics

Description	6230 S NORCROSS TUCKER RD, TUCKER, GA, 30084-1200: Radius Analysis Area Group: Radius 1.0 mile(s)		6230 S NORCROSS TUCKER RD, TUCKER, GA, 30084-1200: Radius Analysis Area Group: Radius 3.0 mile(s)		6230 S NORCROSS TUCKER RD, TUCKER, GA, 30084-1200: Radius Analysis Area Group: Radius 5.0 mile(s)	
	Total	%	Total	%	Total	%
Some Other Race Alone	7,609	53.10%	24,464	49.25%	43,744	47.56%
Two or More Races	774	5.40%	2,511	5.06%	4,969	5.40%

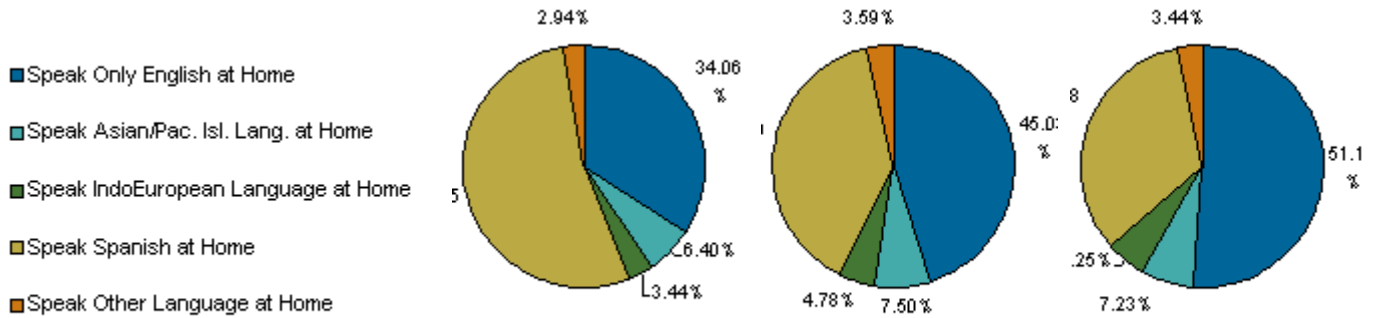
2017 Est. Pop by Race, Asian Alone, by Category	1,411		11,538		26,565	
Chinese, except Taiwanese	306	21.73%	1,896	16.43%	4,960	18.67%
Filipino	29	2.06%	120	1.04%	342	1.29%
Japanese	1	0.07%	25	0.22%	172	0.65%
Asian Indian	115	8.15%	2,666	23.10%	5,483	20.64%
Korean	146	10.32%	735	6.37%	2,493	9.38%
Vietnamese	309	21.93%	3,356	29.09%	7,284	27.42%
Cambodian	110	7.83%	419	3.63%	586	2.21%
Hmong	36	2.58%	57	0.49%	193	0.73%
Laotian	1	0.06%	102	0.88%	169	0.63%
Thai	47	3.33%	67	0.58%	244	0.92%
All Other Asian Races Including 2+ Category	310	21.95%	2,094	18.15%	4,638	17.46%

2017 Est. Population by Ancestry	22,047		110,329		240,891	
Arab	275	1.25%	688	0.62%	1,522	0.63%
Czech	2	0.01%	64	0.06%	248	0.10%
Danish	4	0.02%	34	0.03%	73	0.03%
Dutch	5	0.02%	135	0.12%	484	0.20%
English	334	1.52%	4,046	3.67%	10,530	4.37%
French (except Basque)	67	0.31%	783	0.71%	2,130	0.88%
French Canadian	4	0.02%	87	0.08%	323	0.13%
German	209	0.95%	2,163	1.96%	6,840	2.84%
Greek	9	0.04%	191	0.17%	497	0.21%
Hungarian	24	0.11%	81	0.07%	200	0.08%
Irish	218	0.99%	2,233	2.02%	5,870	2.44%
Italian	108	0.49%	888	0.80%	2,355	0.98%
Lithuanian	0	0.00%	1	0.00%	40	0.02%
United States or American	367	1.66%	3,402	3.08%	8,875	3.68%
Norwegian	10	0.05%	82	0.07%	304	0.13%
Polish	44	0.20%	330	0.30%	923	0.38%
Portuguese	0	0.00%	38	0.03%	155	0.06%
Russian	40	0.18%	428	0.39%	1,049	0.44%

Pop-Facts Demographics

Description	6230 S NORCROSS TUCKER RD, TUCKER, GA, 30084-1200: Radius Analysis Area Group: Radius 1.0 mile(s)		6230 S NORCROSS TUCKER RD, TUCKER, GA, 30084-1200: Radius Analysis Area Group: Radius 3.0 mile(s)		6230 S NORCROSS TUCKER RD, TUCKER, GA, 30084-1200: Radius Analysis Area Group: Radius 5.0 mile(s)	
	Total	%	Total	%	Total	%
Scottish	115	0.52%	840	0.76%	2,378	0.99%
Scotch-Irish	74	0.33%	750	0.68%	1,809	0.75%
Slovak	0	0.00%	13	0.01%	104	0.04%
Subsaharan African	607	2.75%	4,407	3.99%	10,027	4.16%
Swedish	16	0.07%	199	0.18%	685	0.28%
Swiss	1	0.00%	8	0.01%	74	0.03%
Ukrainian	10	0.05%	133	0.12%	523	0.22%
Welsh	3	0.01%	64	0.06%	331	0.14%
West Indian (except Hisp. groups)	135	0.61%	1,361	1.23%	2,814	1.17%
Other ancestries	17,900	81.19%	78,459	71.11%	158,765	65.91%
Ancestry Unclassified	1,467	6.65%	8,422	7.63%	20,961	8.70%

2017 Est. Pop Age 5+ by Language Spoken At Home	19,748	100,363	220,862
---	--------	---------	---------



Speak Only English at Home	6,726	34.06%	45,197	45.03%	112,882	51.11%
Speak Asian/Pac. Isl. Lang. at Home	1,264	6.40%	7,527	7.50%	15,960	7.23%
Speak IndoEuropean Language at Home	680	3.44%	4,793	4.78%	11,590	5.25%
Speak Spanish at Home	10,497	53.15%	39,241	39.10%	72,838	32.98%
Speak Other Language at Home	581	2.94%	3,605	3.59%	7,592	3.44%

2017 Est. Population by Sex	22,047	110,329	240,891			
Male	11,865	53.82%	56,742	51.43%	123,264	51.17%
Female	10,182	46.18%	53,587	48.57%	117,627	48.83%

2017 Est. Population by Age	22,047	110,329	240,891			
Age 0 - 4	2,299	10.43%	9,966	9.03%	20,029	8.31%
Age 5 - 9	1,914	8.68%	9,082	8.23%	18,870	7.83%

Pop-Facts Demographics

Description	6230 S NORCROSS TUCKER RD, TUCKER, GA, 30084-1200: Radius Analysis Area Group: Radius 1.0 mile(s)		6230 S NORCROSS TUCKER RD, TUCKER, GA, 30084-1200: Radius Analysis Area Group: Radius 3.0 mile(s)		6230 S NORCROSS TUCKER RD, TUCKER, GA, 30084-1200: Radius Analysis Area Group: Radius 5.0 mile(s)	
	Total	%	Total	%	Total	%
Age 10 - 14	1,739	7.89%	8,479	7.69%	17,562	7.29%
Age 15 - 17	865	3.92%	4,421	4.01%	9,302	3.86%
Age 18 - 20	752	3.41%	3,912	3.55%	8,384	3.48%
Age 21 - 24	937	4.25%	5,018	4.55%	11,116	4.61%
Age 25 - 34	4,512	20.47%	18,984	17.21%	41,084	17.06%
Age 35 - 44	3,847	17.45%	17,853	16.18%	38,331	15.91%
Age 45 - 54	2,465	11.18%	13,687	12.41%	30,626	12.71%
Age 55 - 64	1,581	7.17%	9,871	8.95%	23,496	9.75%
Age 65 - 74	754	3.42%	5,664	5.13%	13,835	5.74%
Age 75 - 84	307	1.39%	2,563	2.32%	6,110	2.54%
Age 85 and over	75	0.34%	830	0.75%	2,146	0.89%
Age 16 and over	15,814	71.73%	81,352	73.74%	181,378	75.29%
Age 18 and over	15,231	69.09%	78,381	71.04%	175,128	72.70%
Age 21 and over	14,479	65.67%	74,469	67.50%	166,745	69.22%
Age 65 and over	1,137	5.16%	9,056	8.21%	22,091	9.17%
2017 Est. Median Age	30.6		32.5		33.6	
2017 Est. Average Age	30.9		33.5		34.5	

2017 Est. Male Population by Age	11,865		56,742		123,264	
Age 0 - 4	1,201	10.12%	5,170	9.11%	10,352	8.40%
Age 5 - 9	991	8.35%	4,653	8.20%	9,634	7.82%
Age 10 - 14	886	7.46%	4,310	7.60%	8,949	7.26%
Age 15 - 17	459	3.87%	2,304	4.06%	4,915	3.99%
Age 18 - 20	414	3.49%	2,088	3.68%	4,518	3.67%
Age 21 - 24	547	4.61%	2,716	4.79%	6,051	4.91%
Age 25 - 34	2,656	22.38%	10,279	18.12%	22,110	17.94%
Age 35 - 44	2,027	17.08%	9,261	16.32%	19,849	16.10%
Age 45 - 54	1,358	11.44%	7,107	12.53%	15,810	12.83%
Age 55 - 64	812	6.84%	4,859	8.56%	11,430	9.27%
Age 65 - 74	361	3.04%	2,601	4.58%	6,316	5.12%
Age 75 - 84	129	1.09%	1,107	1.95%	2,596	2.11%
Age 85 and over	26	0.22%	288	0.51%	735	0.60%
2017 Est. Median Age, Male	30.4		31.9		32.8	
2017 Est. Average Age, Male	30.6		32.8		33.7	

2017 Est. Female Population by Age	10,182		53,587		117,627	
---	---------------	--	---------------	--	----------------	--

Pop-Facts Demographics

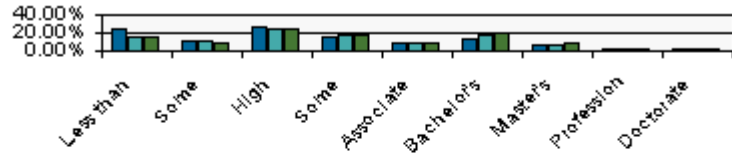
Description	6230 S NORCROSS TUCKER RD, TUCKER, GA, 30084-1200: Radius Analysis Area Group: Radius 1.0 mile(s)		6230 S NORCROSS TUCKER RD, TUCKER, GA, 30084-1200: Radius Analysis Area Group: Radius 3.0 mile(s)		6230 S NORCROSS TUCKER RD, TUCKER, GA, 30084-1200: Radius Analysis Area Group: Radius 5.0 mile(s)	
	Total	%	Total	%	Total	%
Age 0 - 4	1,098	10.78%	4,796	8.95%	9,677	8.23%
Age 5 - 9	923	9.06%	4,430	8.27%	9,236	7.85%
Age 10 - 14	853	8.38%	4,169	7.78%	8,613	7.32%
Age 15 - 17	406	3.99%	2,117	3.95%	4,387	3.73%
Age 18 - 20	338	3.32%	1,824	3.40%	3,866	3.29%
Age 21 - 24	390	3.83%	2,302	4.30%	5,065	4.31%
Age 25 - 34	1,857	18.23%	8,704	16.24%	18,975	16.13%
Age 35 - 44	1,821	17.88%	8,592	16.03%	18,482	15.71%
Age 45 - 54	1,107	10.87%	6,580	12.28%	14,815	12.60%
Age 55 - 64	769	7.55%	5,013	9.35%	12,066	10.26%
Age 65 - 74	394	3.87%	3,062	5.72%	7,518	6.39%
Age 75 - 84	178	1.75%	1,456	2.72%	3,515	2.99%
Age 85 and over	49	0.48%	542	1.01%	1,412	1.20%
2017 Est. Median Age, Female	30.8		33.2		34.5	
2017 Est. Average Age, Female	31.2		34.2		35.4	

2017 Est. Pop Age 15+ by Marital Status	16,096		82,802		184,430	
Total, Never Married	7,334	45.56%	34,395	41.54%	74,071	40.16%
Males, Never Married	4,003	24.87%	19,028	22.98%	41,138	22.31%
Females, Never Married	3,330	20.69%	15,367	18.56%	32,933	17.86%
Married, Spouse present	5,331	33.12%	31,342	37.85%	71,839	38.95%
Married, Spouse absent	1,873	11.63%	6,805	8.22%	13,913	7.54%
Widowed	326	2.03%	2,316	2.80%	6,565	3.56%
Males Widowed	93	0.58%	580	0.70%	1,329	0.72%
Females Widowed	233	1.45%	1,736	2.10%	5,236	2.84%
Divorced	1,232	7.66%	7,943	9.59%	18,042	9.78%
Males Divorced	631	3.92%	3,120	3.77%	7,406	4.02%
Females Divorced	601	3.73%	4,823	5.83%	10,636	5.77%

2017 Est. Pop Age 25+ by Edu. Attainment	13,542		69,451		155,629	
---	---------------	--	---------------	--	----------------	--

Pop-Facts Demographics

Description	6230 S NORCROSS TUCKER RD, TUCKER, GA, 30084-1200: Radius Analysis Area Group: Radius 1.0 mile(s)		6230 S NORCROSS TUCKER RD, TUCKER, GA, 30084-1200: Radius Analysis Area Group: Radius 3.0 mile(s)		6230 S NORCROSS TUCKER RD, TUCKER, GA, 30084-1200: Radius Analysis Area Group: Radius 5.0 mile(s)	
	Total	%	Total	%	Total	%



■ 6230 S NORCROSS TUCKER RD, TUCKER, GA, 30084-1200: Radius Analysis Area Group: Radius 1.0 mile(s)
■ 6230 S NORCROSS TUCKER RD, TUCKER, GA, 30084-1200: Radius Analysis Area Group: Radius 3.0 mile(s)
■ 6230 S NORCROSS TUCKER RD, TUCKER, GA, 30084-1200: Radius Analysis Area Group: Radius 5.0 mile(s)

Less than 9th grade	3,271	24.15%	10,792	15.54%	21,621	13.89%
Some High School, no diploma	1,368	10.11%	6,744	9.71%	13,405	8.61%
High School Graduate (or GED)	3,316	24.49%	16,778	24.16%	35,693	22.93%
Some College, no degree	1,865	13.77%	11,496	16.55%	26,806	17.22%
Associate Degree	1,085	8.01%	5,328	7.67%	11,104	7.13%
Bachelor's Degree	1,801	13.30%	11,471	16.52%	28,858	18.54%
Master's Degree	663	4.90%	4,595	6.62%	12,367	7.95%
Professional School Degree	98	0.72%	985	1.42%	2,752	1.77%
Doctorate Degree	75	0.56%	1,263	1.82%	3,023	1.94%

2017 Est. Pop Age 25+ by Edu. Attain., Hisp./Lat.	7,852		26,518		49,644	
No High School Diploma	4,657	59.30%	14,193	53.52%	26,717	53.82%
High School Graduate	1,959	24.95%	7,349	27.71%	12,713	25.61%
Some College or Associate's Degree	886	11.28%	3,378	12.74%	6,204	12.50%
Bachelor's Degree or Higher	351	4.47%	1,599	6.03%	4,009	8.08%

2017 Est. Households by Household Type	6,914		37,443		85,263	
Family Households	4,473	64.70%	24,573	65.63%	54,607	64.05%
Nonfamily Households	2,441	35.30%	12,870	34.37%	30,656	35.95%

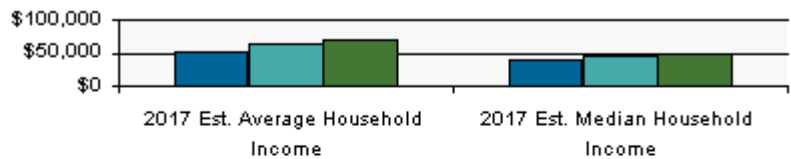
2017 Est. Group Quarters Population	6		212		695	
--	----------	--	------------	--	------------	--

2017 HHs by Ethnicity, Hispanic/Latino	3,442		11,959		21,939	
---	--------------	--	---------------	--	---------------	--

2017 Est. Households by HH Income	6,914		37,443		85,263	
Income < \$15,000	1,063	15.37%	4,747	12.68%	9,810	11.51%

Pop-Facts Demographics

Description	6230 S NORCROSS TUCKER RD, TUCKER, GA, 30084-1200: Radius Analysis Area Group: Radius 1.0 mile(s)		6230 S NORCROSS TUCKER RD, TUCKER, GA, 30084-1200: Radius Analysis Area Group: Radius 3.0 mile(s)		6230 S NORCROSS TUCKER RD, TUCKER, GA, 30084-1200: Radius Analysis Area Group: Radius 5.0 mile(s)	
	Total	%	Total	%	Total	%
Income \$15,000 - \$24,999	1,226	17.74%	5,062	13.52%	10,234	12.00%
Income \$25,000 - \$34,999	1,034	14.96%	5,676	15.16%	11,970	14.04%
Income \$35,000 - \$49,999	1,258	18.20%	5,994	16.01%	13,436	15.76%
Income \$50,000 - \$74,999	1,228	17.76%	6,359	16.98%	14,940	17.52%
Income \$75,000 - \$99,999	425	6.15%	3,275	8.75%	8,666	10.16%
Income \$100,000 - \$124,999	242	3.51%	2,395	6.40%	5,620	6.59%
Income \$125,000 - \$149,999	133	1.92%	1,313	3.51%	3,636	4.26%
Income \$150,000 - \$199,999	171	2.47%	1,367	3.65%	3,527	4.14%
Income \$200,000 - \$249,999	62	0.89%	571	1.52%	1,466	1.72%
Income \$250,000 - \$499,999	54	0.77%	527	1.41%	1,491	1.75%
Income \$500,000+	17	0.25%	157	0.42%	466	0.55%



■ 6230 S NORCROSS TUCKER RD, TUCKER, GA, 30084-1200: Radius Analysis Area Group: Radius 1.0 mile(s)
■ 6230 S NORCROSS TUCKER RD, TUCKER, GA, 30084-1200: Radius Analysis Area Group: Radius 3.0 mile(s)
■ 6230 S NORCROSS TUCKER RD, TUCKER, GA, 30084-1200: Radius Analysis Area Group: Radius 5.0 mile(s)

2017 Est. Average Household Income	\$49,988	\$62,040	\$67,318
2017 Est. Median Household Income	\$36,590	\$43,098	\$46,853

2017 Median HH Inc. by Single-Class. Race or Eth.			
White Alone	\$40,411	\$52,315	\$60,352
Black or African American Alone	\$32,899	\$35,948	\$39,349
American Indian and Alaska Native Alone	\$33,780	\$43,645	\$43,478
Asian Alone	\$52,335	\$58,782	\$54,004
Native Hawaiian and Other Pacific Islander Alone	\$108,057	\$64,914	\$62,533
Some Other Race Alone	\$29,906	\$28,694	\$31,939
Two or More Races	\$44,416	\$45,439	\$43,427
Hispanic or Latino	\$31,587	\$32,223	\$34,413
Not Hispanic or Latino	\$44,790	\$50,952	\$53,740

Pop-Facts Demographics

Description	6230 S NORCROSS TUCKER RD, TUCKER, GA, 30084-1200: Radius Analysis Area Group: Radius 1.0 mile(s)		6230 S NORCROSS TUCKER RD, TUCKER, GA, 30084-1200: Radius Analysis Area Group: Radius 3.0 mile(s)		6230 S NORCROSS TUCKER RD, TUCKER, GA, 30084-1200: Radius Analysis Area Group: Radius 5.0 mile(s)	
	Total	%	Total	%	Total	%
2017 Est. Family HH Type by Presence of Own Child.	4,473		24,573		54,607	
Married-Couple Family, own children	1,598	35.73%	8,746	35.59%	18,480	33.84%
Married-Couple Family, no own children	1,025	22.92%	7,109	28.93%	17,213	31.52%
Male Householder, own children	331	7.39%	1,382	5.62%	2,747	5.03%
Male Householder, no own children	414	9.25%	1,650	6.71%	3,691	6.76%
Female Householder, own children	734	16.42%	3,591	14.61%	7,733	14.16%
Female Householder, no own children	371	8.30%	2,096	8.53%	4,742	8.68%
2017 Est. Households by Household Size	6,914		37,443		85,263	
1-person	1,654	23.92%	9,578	25.58%	23,244	27.26%
2-person	1,476	21.35%	9,619	25.69%	23,030	27.01%
3-person	1,096	15.85%	6,056	16.17%	13,702	16.07%
4-person	1,068	15.45%	5,341	14.26%	11,358	13.32%
5-person	766	11.08%	3,307	8.83%	6,777	7.95%
6-person	408	5.91%	1,712	4.57%	3,562	4.18%
7-or-more-person	445	6.44%	1,830	4.89%	3,589	4.21%
2017 Est. Average Household Size	3.19		2.94		2.82	
2017 Est. Households by Presence of People Under 18	6,914		37,443		85,263	
Households with 1 or More People under Age 18:	3,050	44.12%	15,329	40.94%	32,561	38.19%
Married-Couple Family	1,706	55.92%	9,257	60.39%	19,597	60.19%
Other Family, Male Householder	427	14.00%	1,757	11.47%	3,611	11.09%
Other Family, Female Householder	846	27.74%	4,102	26.76%	8,855	27.19%
Nonfamily, Male Householder	56	1.84%	159	1.04%	369	1.13%
Nonfamily, Female Householder	15	0.50%	53	0.35%	129	0.40%
Households with No People under Age 18:	3,864	55.88%	22,114	59.06%	52,702	61.81%
Married-Couple Family	917	23.72%	6,602	29.85%	16,102	30.55%
Other Family, Male Householder	320	8.28%	1,278	5.78%	2,835	5.38%
Other Family, Female Householder	257	6.64%	1,576	7.13%	3,609	6.85%
Nonfamily, Male Householder	1,354	35.05%	6,613	29.90%	15,209	28.86%
Nonfamily, Female Householder	1,016	26.30%	6,045	27.34%	14,946	28.36%
2017 Est. Households by Number of Vehicles	6,914		37,443		85,263	

Pop-Facts Demographics

Description	6230 S NORCROSS TUCKER RD, TUCKER, GA, 30084-1200: Radius Analysis Area Group: Radius 1.0 mile(s)		6230 S NORCROSS TUCKER RD, TUCKER, GA, 30084-1200: Radius Analysis Area Group: Radius 3.0 mile(s)		6230 S NORCROSS TUCKER RD, TUCKER, GA, 30084-1200: Radius Analysis Area Group: Radius 5.0 mile(s)	
	Total	%	Total	%	Total	%
No Vehicles	972	14.06%	3,040	8.12%	6,320	7.41%
1 Vehicle	3,040	43.97%	15,305	40.88%	35,618	41.77%
2 Vehicles	2,165	31.32%	13,318	35.57%	30,246	35.47%
3 Vehicles	502	7.26%	3,931	10.50%	9,379	11.00%
4 Vehicles	156	2.26%	1,370	3.66%	2,812	3.30%
5 or more Vehicles	78	1.13%	479	1.28%	888	1.04%
2017 Est. Average Number of Vehicles	1.4		1.7		1.7	

2017 Est. Families by Poverty Status	4,473		24,573		54,607	
2017 Families at or Above Poverty	3,040	67.97%	18,805	76.53%	43,522	79.70%
2017 Families at or Above Poverty with Children	1,603	35.82%	9,835	40.02%	22,240	40.73%
2017 Families Below Poverty	1,433	32.03%	5,768	23.47%	11,084	20.30%
2017 Families Below Poverty with Children	1,283	28.68%	4,919	20.02%	9,420	17.25%

2017 Est. Pop Age 16+ by Employment Status	15,814		81,352		181,378	
In Armed Forces	1	0.01%	75	0.09%	207	0.11%
Civilian - Employed	10,809	68.35%	53,122	65.30%	118,866	65.54%
Civilian - Unemployed	1,058	6.69%	5,287	6.50%	10,893	6.01%
Not in Labor Force	3,946	24.95%	22,868	28.11%	51,412	28.35%

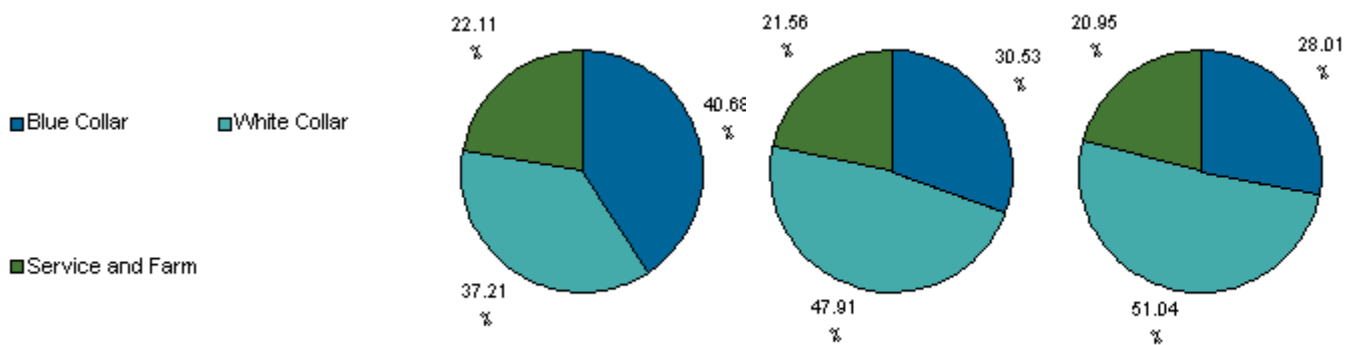
2017 Est. Civ. Employed Pop 16+ by Class of Worker	10,769		52,853		118,178	
For-Profit Private Workers	8,824	81.94%	41,597	78.70%	91,168	77.14%
Non-Profit Private Workers	540	5.02%	2,687	5.08%	6,279	5.31%
Local Government Workers	193	1.79%	1,467	2.78%	4,078	3.45%
State Government Workers	63	0.59%	1,045	1.98%	2,467	2.09%
Federal Government Workers	122	1.14%	1,219	2.31%	2,702	2.29%
Self-Employed Workers	1,026	9.53%	4,732	8.95%	11,231	9.50%
Unpaid Family Workers	0	0.00%	107	0.20%	252	0.21%

2017 Est. Civ. Employed Pop 16+ by Occupation	10,769		52,853		118,178	
Architect/Engineer	43	0.40%	497	0.94%	1,430	1.21%
Arts/Entertainment/Sports	212	1.97%	921	1.74%	2,246	1.90%
Building Grounds Maintenance	1,294	12.01%	4,506	8.53%	9,488	8.03%
Business/Financial Operations	299	2.78%	1,969	3.72%	4,976	4.21%
Community/Social Services	112	1.04%	464	0.88%	1,280	1.08%

Pop-Facts Demographics

Description	6230 S NORCROSS TUCKER RD, TUCKER, GA, 30084-1200: Radius Analysis Area Group: Radius 1.0 mile(s)		6230 S NORCROSS TUCKER RD, TUCKER, GA, 30084-1200: Radius Analysis Area Group: Radius 3.0 mile(s)		6230 S NORCROSS TUCKER RD, TUCKER, GA, 30084-1200: Radius Analysis Area Group: Radius 5.0 mile(s)	
	Total	%	Total	%	Total	%
Computer/Mathematical	197	1.83%	1,606	3.04%	3,904	3.30%
Construction/Extraction	2,880	26.75%	8,698	16.46%	16,552	14.01%
Education/Training/Library	168	1.56%	1,890	3.58%	5,057	4.28%
Farming/Fishing/Forestry	35	0.33%	232	0.44%	275	0.23%
Food Prep/Serving	563	5.22%	3,362	6.36%	8,363	7.08%
Health Practitioner/Technician	345	3.21%	2,098	3.97%	4,637	3.92%
Healthcare Support	124	1.15%	712	1.35%	1,503	1.27%
Maintenance Repair	349	3.24%	1,503	2.84%	3,180	2.69%
Legal	19	0.17%	316	0.60%	942	0.80%
Life/Physical/Social Science	74	0.69%	633	1.20%	1,396	1.18%
Management	516	4.80%	3,488	6.60%	9,492	8.03%
Office/Admin. Support	1,203	11.17%	5,849	11.07%	12,606	10.67%
Production	650	6.04%	3,250	6.15%	6,411	5.43%
Protective Services	39	0.36%	519	0.98%	1,149	0.97%
Sales/Related	818	7.60%	5,589	10.57%	12,358	10.46%
Personal Care/Service	326	3.03%	2,064	3.90%	3,982	3.37%
Transportation/Moving	501	4.65%	2,687	5.08%	6,952	5.88%

2017 Est. Pop 16+ by Occupation Classification	10,769	52,853	118,178
--	--------	--------	---------



Blue Collar	4,380	40.68%	16,138	30.53%	33,096	28.01%
White Collar	4,007	37.21%	25,320	47.91%	60,323	51.04%
Service and Farm	2,381	22.11%	11,395	21.56%	24,759	20.95%

2017 Est. Workers Age 16+ by Transp. to Work	10,187	50,229	113,739			
Drove Alone	6,107	59.95%	34,519	68.72%	78,725	69.22%
Car Pooled	2,196	21.55%	9,553	19.02%	20,541	18.06%

Pop-Facts Demographics

Description	6230 S NORCROSS TUCKER RD, TUCKER, GA, 30084-1200: Radius Analysis Area Group: Radius 1.0 mile(s)		6230 S NORCROSS TUCKER RD, TUCKER, GA, 30084-1200: Radius Analysis Area Group: Radius 3.0 mile(s)		6230 S NORCROSS TUCKER RD, TUCKER, GA, 30084-1200: Radius Analysis Area Group: Radius 5.0 mile(s)	
	Total	%	Total	%	Total	%
Public Transportation	380	3.73%	1,649	3.28%	5,105	4.49%
Walked	485	4.76%	1,104	2.20%	2,304	2.03%
Bicycle	1	0.01%	40	0.08%	130	0.11%
Other Means	616	6.05%	1,403	2.79%	2,373	2.09%
Worked at Home	402	3.94%	1,962	3.91%	4,562	4.01%

2017 Est. Workers Age 16+ by Travel Time to Work						
Less than 15 Minutes	1,648		8,231		18,707	
15 - 29 Minutes	3,269		16,017		36,615	
30 - 44 Minutes	2,870		15,332		33,328	
45 - 59 Minutes	987		4,274		10,296	
60 or more Minutes	1,017		4,479		10,154	
2017 Est. Avg Travel Time to Work in Minutes	33.00		32.00		32.00	

2017 Est. Occupied Housing Units by Tenure						
Owner Occupied	2,499	36.15%	17,580	46.95%	41,515	48.69%
Renter Occupied	4,415	63.85%	19,863	53.05%	43,748	51.31%

2017 Owner Occ. HUs: Avg. Length of Residence						
	15.9		15.5		15.6	

2017 Renter Occ. HUs: Avg. Length of Residence						
	5.6		5.5		5.5	

2017 Est. Owner-Occupied Housing Units by Value						
	2,499		17,580		41,515	
Value Less than \$20,000	56	2.24%	489	2.78%	1,008	2.43%
Value \$20,000 - \$39,999	77	3.09%	359	2.04%	640	1.54%
Value \$40,000 - \$59,999	173	6.94%	474	2.70%	981	2.36%
Value \$60,000 - \$79,999	172	6.90%	832	4.73%	1,622	3.91%
Value \$80,000 - \$99,999	242	9.69%	1,319	7.50%	2,935	7.07%
Value \$100,000 - \$149,999	592	23.67%	3,630	20.65%	7,952	19.15%
Value \$150,000 - \$199,999	560	22.42%	2,925	16.64%	7,054	16.99%
Value \$200,000 - \$299,999	505	20.21%	4,476	25.46%	10,070	24.26%
Value \$300,000 - \$399,999	65	2.59%	2,029	11.54%	5,107	12.30%
Value \$400,000 - \$499,999	17	0.67%	654	3.72%	2,333	5.62%
Value \$500,000 - \$749,999	7	0.29%	216	1.23%	1,091	2.63%

Pop-Facts Demographics

Description	6230 S NORCROSS TUCKER RD, TUCKER, GA, 30084-1200: Radius Analysis Area Group: Radius 1.0 mile(s)		6230 S NORCROSS TUCKER RD, TUCKER, GA, 30084-1200: Radius Analysis Area Group: Radius 3.0 mile(s)		6230 S NORCROSS TUCKER RD, TUCKER, GA, 30084-1200: Radius Analysis Area Group: Radius 5.0 mile(s)	
	Total	%	Total	%	Total	%
Value \$750,000 - \$999,999	1	0.06%	74	0.42%	391	0.94%
Value \$1,000,000 or more	31	1.24%	102	0.58%	331	0.80%
2017 Est. Median All Owner-Occupied Housing Value	\$144,667		\$178,832		\$189,832	

2017 Est. Housing Units by Units in Structure	8,203		42,211		95,445	
1 Unit Attached	571	6.96%	3,650	8.65%	7,875	8.25%
1 Unit Detached	2,465	30.05%	18,397	43.58%	43,676	45.76%
2 Units	126	1.54%	666	1.58%	1,484	1.56%
3 or 4 Units	752	9.17%	2,258	5.35%	4,729	4.96%
5 to 19 Units	3,546	43.23%	11,702	27.72%	27,151	28.45%
20 to 49 Units	460	5.61%	3,911	9.27%	6,980	7.31%
50 or More Units	195	2.38%	955	2.26%	2,525	2.65%
Mobile Home or Trailer	87	1.06%	638	1.51%	978	1.02%
Boat, RV, Van, etc.	0	0.00%	34	0.08%	46	0.05%

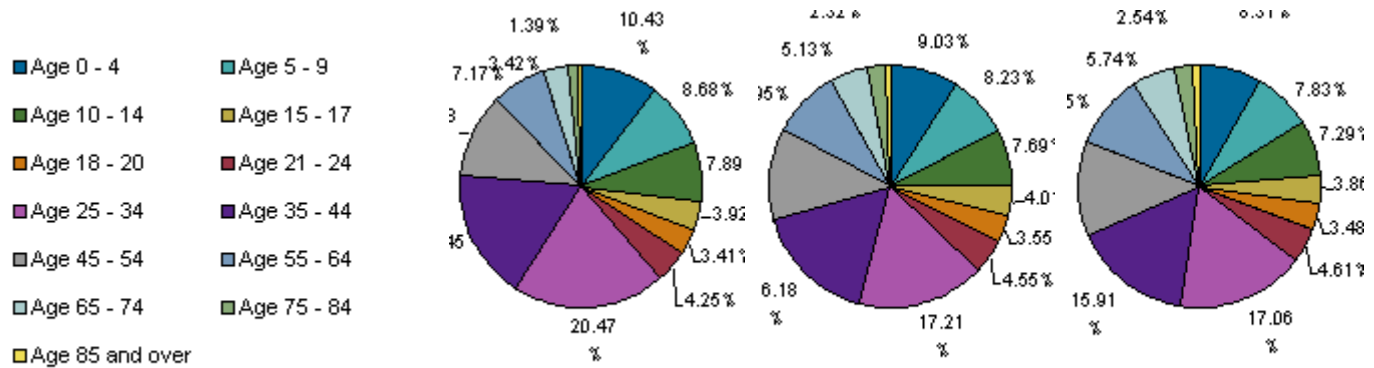
2017 Est. Housing Units by Year Structure Built	8,203		42,211		95,445	
Housing Units Built 2010 or later	372	4.53%	3,266	7.74%	8,250	8.64%
Housing Units Built 2000 to 2009	449	5.48%	5,094	12.07%	11,382	11.93%
Housing Units Built 1990 to 1999	1,512	18.43%	6,228	14.76%	13,645	14.30%
Housing Units Built 1980 to 1989	3,671	44.75%	12,759	30.23%	25,149	26.35%
Housing Units Built 1970 to 1979	1,512	18.43%	7,671	18.17%	18,454	19.33%
Housing Units Built 1960 to 1969	568	6.93%	5,810	13.76%	13,508	14.15%
Housing Units Built 1950 to 1959	101	1.23%	1,004	2.38%	3,938	4.13%
Housing Units Built 1940 to 1949	17	0.21%	266	0.63%	709	0.74%
Housing Unit Built 1939 or Earlier	1	0.01%	111	0.26%	410	0.43%
2017 Est. Median Year Structure Built	1985		1985		1984	

Pop-Facts Demographics

Description	6230 S NORCROSS TUCKER RD, TUCKER, GA, 30084-1200: Radius Analysis Area Group: Radius 1.0 mile(s)		6230 S NORCROSS TUCKER RD, TUCKER, GA, 30084-1200: Radius Analysis Area Group: Radius 3.0 mile(s)		6230 S NORCROSS TUCKER RD, TUCKER, GA, 30084-1200: Radius Analysis Area Group: Radius 5.0 mile(s)	
	Total	%	Total	%	Total	%

Pop-Facts Population Quick Facts

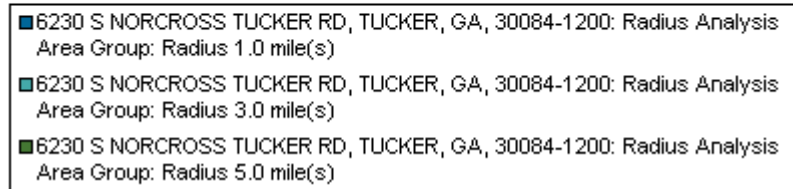
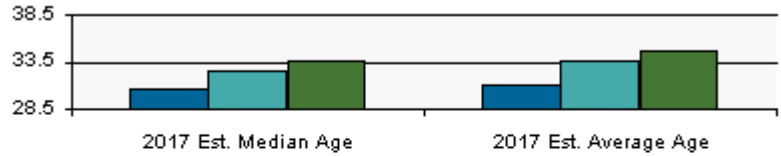
2017 Est. Population by Age	22,047	110,329	240,891
------------------------------------	---------------	----------------	----------------



Age Group	1.0 Mile Radius	1.0 Mile %	3.0 Mile Radius	3.0 Mile %	5.0 Mile Radius	5.0 Mile %
Age 0 - 4	2,299	10.43%	9,966	9.03%	20,029	8.31%
Age 5 - 9	1,914	8.68%	9,082	8.23%	18,870	7.83%
Age 10 - 14	1,739	7.89%	8,479	7.69%	17,562	7.29%
Age 15 - 17	865	3.92%	4,421	4.01%	9,302	3.86%
Age 18 - 20	752	3.41%	3,912	3.55%	8,384	3.48%
Age 21 - 24	937	4.25%	5,018	4.55%	11,116	4.61%
Age 25 - 34	4,512	20.47%	18,984	17.21%	41,084	17.06%
Age 35 - 44	3,847	17.45%	17,853	16.18%	38,331	15.91%
Age 45 - 54	2,465	11.18%	13,687	12.41%	30,626	12.71%
Age 55 - 64	1,581	7.17%	9,871	8.95%	23,496	9.75%
Age 65 - 74	754	3.42%	5,664	5.13%	13,835	5.74%
Age 75 - 84	307	1.39%	2,563	2.32%	6,110	2.54%
Age 85 and over	75	0.34%	830	0.75%	2,146	0.89%
Age 16 and over	15,814	71.73%	81,352	73.74%	181,378	75.29%
Age 18 and over	15,231	69.09%	78,381	71.04%	175,128	72.70%
Age 21 and over	14,479	65.67%	74,469	67.50%	166,745	69.22%
Age 65 and over	1,137	5.16%	9,056	8.21%	22,091	9.17%

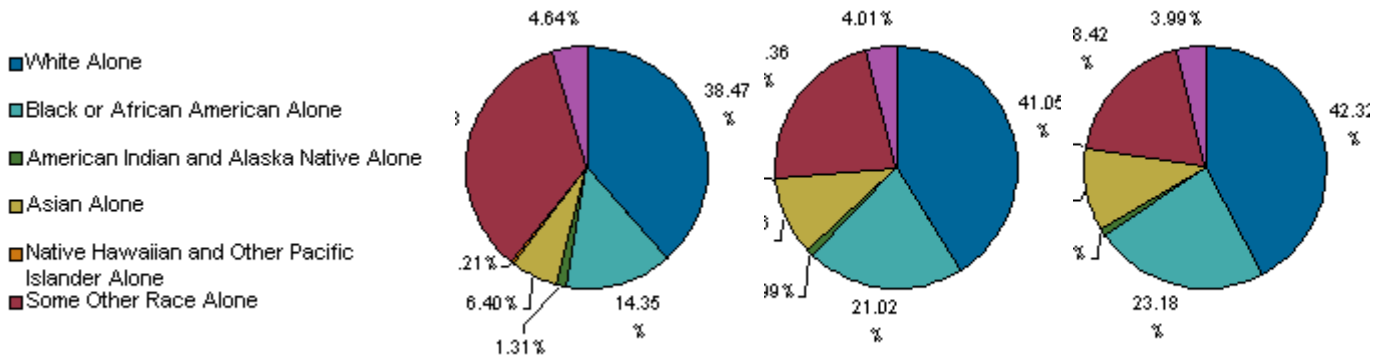
Pop-Facts Demographics

Description	6230 S NORCROSS TUCKER RD, TUCKER, GA, 30084-1200: Radius Analysis Area Group: Radius 1.0 mile(s)		6230 S NORCROSS TUCKER RD, TUCKER, GA, 30084-1200: Radius Analysis Area Group: Radius 3.0 mile(s)		6230 S NORCROSS TUCKER RD, TUCKER, GA, 30084-1200: Radius Analysis Area Group: Radius 5.0 mile(s)	
	Total	%	Total	%	Total	%



2017 Est. Median Age	30.6	32.5	33.6
2017 Est. Average Age	30.9	33.5	34.5

2017 Est. Population by Single-Classification Race	22,047	110,329	240,891
--	--------	---------	---------



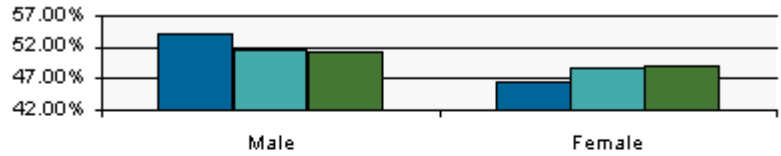
White Alone	8,481	38.47%	45,292	41.05%	101,940	42.32%
Black or African American Alone	3,164	14.35%	23,187	21.02%	55,844	23.18%
American Indian and Alaska Native Alone	288	1.31%	1,089	0.99%	2,300	0.95%
Asian Alone	1,411	6.40%	11,538	10.46%	26,565	11.03%
Native Hawaiian and Other Pacific Islander Alone	46	0.21%	127	0.12%	258	0.11%
Some Other Race Alone	7,635	34.63%	24,667	22.36%	44,380	18.42%
Two or More Races	1,023	4.64%	4,429	4.01%	9,604	3.99%

2017 Est. Population by Ethnicity (Hispanic or Latino)	22,047	110,329	240,891			
Hispanic or Latino	14,332	65.01%	49,674	45.02%	91,978	38.18%
Not Hispanic or Latino	7,715	34.99%	60,655	54.98%	148,913	61.82%

Pop-Facts Demographics

Description	6230 S NORCROSS TUCKER RD, TUCKER, GA, 30084-1200: Radius Analysis Area Group: Radius 1.0 mile(s)		6230 S NORCROSS TUCKER RD, TUCKER, GA, 30084-1200: Radius Analysis Area Group: Radius 3.0 mile(s)		6230 S NORCROSS TUCKER RD, TUCKER, GA, 30084-1200: Radius Analysis Area Group: Radius 5.0 mile(s)	
	Total	%	Total	%	Total	%

2017 Est. Population by Sex	22,047	110,329	240,891
------------------------------------	---------------	----------------	----------------



■ 6230 S NORCROSS TUCKER RD, TUCKER, GA, 30084-1200: Radius Analysis Area Group: Radius 1.0 mile(s)
■ 6230 S NORCROSS TUCKER RD, TUCKER, GA, 30084-1200: Radius Analysis Area Group: Radius 3.0 mile(s)
■ 6230 S NORCROSS TUCKER RD, TUCKER, GA, 30084-1200: Radius Analysis Area Group: Radius 5.0 mile(s)

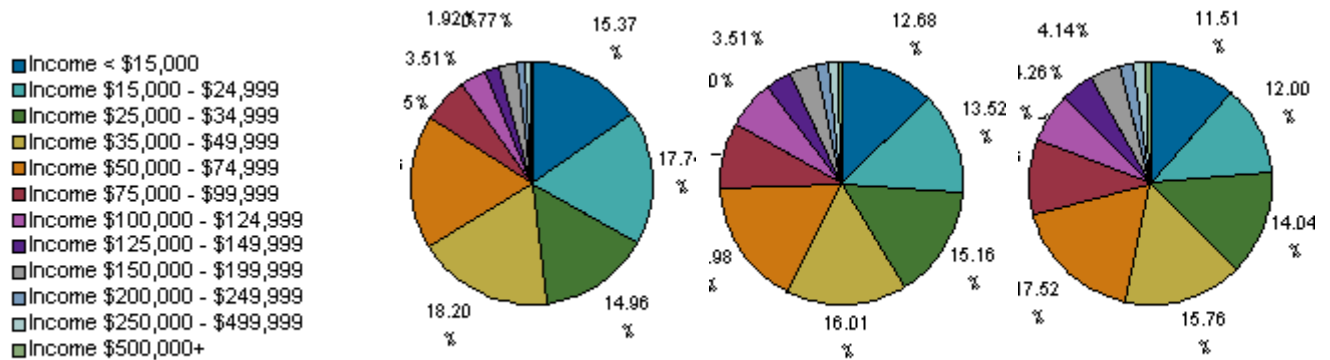
Male	11,865	53.82%	56,742	51.43%	123,264	51.17%
Female	10,182	46.18%	53,587	48.57%	117,627	48.83%

Pop-Facts Demographics

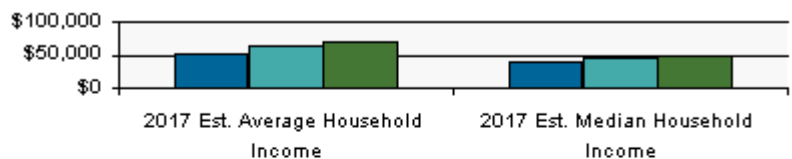
Description	6230 S NORCROSS TUCKER RD, TUCKER, GA, 30084-1200: Radius Analysis Area Group: Radius 1.0 mile(s)		6230 S NORCROSS TUCKER RD, TUCKER, GA, 30084-1200: Radius Analysis Area Group: Radius 3.0 mile(s)		6230 S NORCROSS TUCKER RD, TUCKER, GA, 30084-1200: Radius Analysis Area Group: Radius 5.0 mile(s)	
	Total	%	Total	%	Total	%

Pop-Facts Household Quick Facts

2017 Est. Households by Household Income	6,914	37,443	85,263
--	-------	--------	--------



Income Category	Radius 1.0 (Total)	Radius 1.0 (%)	Radius 3.0 (Total)	Radius 3.0 (%)	Radius 5.0 (Total)	Radius 5.0 (%)
Income < \$15,000	1,063	15.37%	4,747	12.68%	9,810	11.51%
Income \$15,000 - \$24,999	1,226	17.74%	5,062	13.52%	10,234	12.00%
Income \$25,000 - \$34,999	1,034	14.96%	5,676	15.16%	11,970	14.04%
Income \$35,000 - \$49,999	1,258	18.20%	5,994	16.01%	13,436	15.76%
Income \$50,000 - \$74,999	1,228	17.76%	6,359	16.98%	14,940	17.52%
Income \$75,000 - \$99,999	425	6.15%	3,275	8.75%	8,666	10.16%
Income \$100,000 - \$124,999	242	3.51%	2,395	6.40%	5,620	6.59%
Income \$125,000 - \$149,999	133	1.92%	1,313	3.51%	3,636	4.26%
Income \$150,000 - \$199,999	171	2.47%	1,367	3.65%	3,527	4.14%
Income \$200,000 - \$249,999	62	0.89%	571	1.52%	1,466	1.72%
Income \$250,000 - \$499,999	54	0.77%	527	1.41%	1,491	1.75%
Income \$500,000+	17	0.25%	157	0.42%	466	0.55%



Legend
■ 6230 S NORCROSS TUCKER RD, TUCKER, GA, 30084-1200: Radius Analysis Area Group: Radius 1.0 mile(s)
■ 6230 S NORCROSS TUCKER RD, TUCKER, GA, 30084-1200: Radius Analysis Area Group: Radius 3.0 mile(s)
■ 6230 S NORCROSS TUCKER RD, TUCKER, GA, 30084-1200: Radius Analysis Area Group: Radius 5.0 mile(s)

Income Type	Radius 1.0	Radius 3.0	Radius 5.0
2017 Est. Average Household Income	\$49,988	\$62,040	\$67,318
2017 Est. Median Household Income	\$36,590	\$43,098	\$46,853

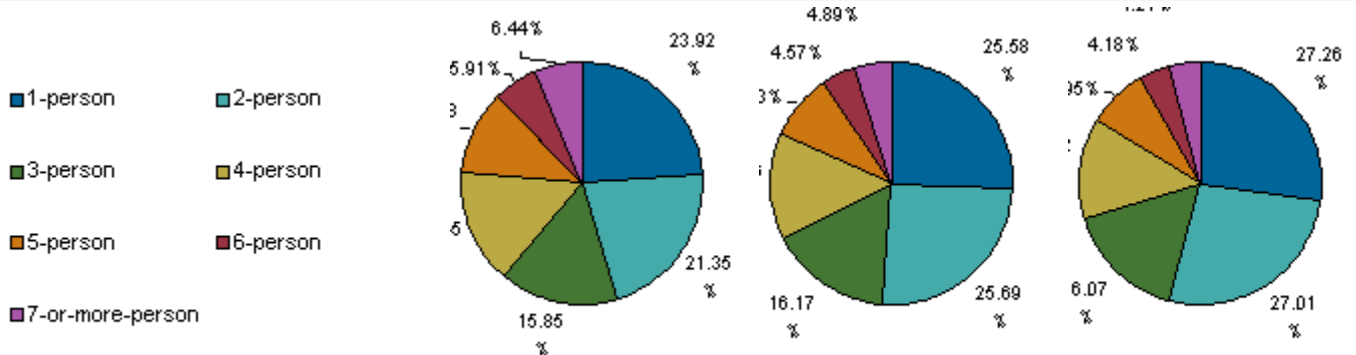
Pop-Facts Demographics

Description	6230 S NORCROSS TUCKER RD, TUCKER, GA, 30084-1200: Radius Analysis Area Group: Radius 1.0 mile(s)		6230 S NORCROSS TUCKER RD, TUCKER, GA, 30084-1200: Radius Analysis Area Group: Radius 3.0 mile(s)		6230 S NORCROSS TUCKER RD, TUCKER, GA, 30084-1200: Radius Analysis Area Group: Radius 5.0 mile(s)	
	Total	%	Total	%	Total	%

2017 Median HH Inc. by Single-Classification Race						
White Alone	\$40,411		\$52,315		\$60,352	
Black or African American Alone	\$32,899		\$35,948		\$39,349	
American Indian and Alaska Native Alone	\$33,780		\$43,645		\$43,478	
Asian Alone	\$52,335		\$58,782		\$54,004	
Native Hawaiian and Other Pacific Islander Alone	\$108,057		\$64,914		\$62,533	
Some Other Race Alone	\$29,906		\$28,694		\$31,939	
Two or More Races	\$44,416		\$45,439		\$43,427	
Hispanic or Latino	\$31,587		\$32,223		\$34,413	
Not Hispanic or Latino	\$44,790		\$50,952		\$53,740	

2017 Est. Households by Household Type	6,914		37,443		85,263	
Family Households	4,473	64.70%	24,573	65.63%	54,607	64.05%
Nonfamily Households	2,441	35.30%	12,870	34.37%	30,656	35.95%
2017 Est. Group Quarters Population	6		212		695	

2017 Est. Households by Household Size	6,914		37,443		85,263	
--	-------	--	--------	--	--------	--



1-person	1,654	23.92%	9,578	25.58%	23,244	27.26%
2-person	1,476	21.35%	9,619	25.69%	23,030	27.01%
3-person	1,096	15.85%	6,056	16.17%	13,702	16.07%
4-person	1,068	15.45%	5,341	14.26%	11,358	13.32%
5-person	766	11.08%	3,307	8.83%	6,777	7.95%
6-person	408	5.91%	1,712	4.57%	3,562	4.18%
7-or-more-person	445	6.44%	1,830	4.89%	3,589	4.21%

Pop-Facts Demographics

Description	6230 S NORCROSS TUCKER RD, TUCKER, GA, 30084-1200: Radius Analysis Area Group: Radius 1.0 mile(s)		6230 S NORCROSS TUCKER RD, TUCKER, GA, 30084-1200: Radius Analysis Area Group: Radius 3.0 mile(s)		6230 S NORCROSS TUCKER RD, TUCKER, GA, 30084-1200: Radius Analysis Area Group: Radius 5.0 mile(s)	
	Total	%	Total	%	Total	%
2017 Est. Average Household Size	3.19		2.94		2.82	

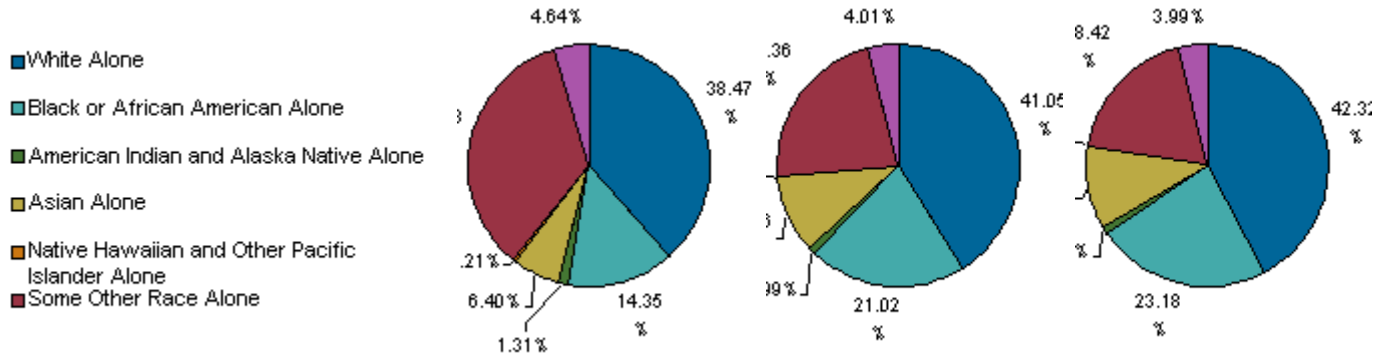
2017 Est. HHs by Type by Presence of Own Children	4,473		24,573		54,607	
Married-Couple Family, own children	1,598	35.73%	8,746	35.59%	18,480	33.84%
Married-Couple Family, no own children	1,025	22.92%	7,109	28.93%	17,213	31.52%
Male Householder, own children	331	7.39%	1,382	5.62%	2,747	5.03%
Male Householder, no own children	414	9.25%	1,650	6.71%	3,691	6.76%
Female Householder, own children	734	16.42%	3,591	14.61%	7,733	14.16%
Female Householder, no own children	371	8.30%	2,096	8.53%	4,742	8.68%

Pop-Facts Demographics

Description	6230 S NORCROSS TUCKER RD, TUCKER, GA, 30084-1200: Radius Analysis Area Group: Radius 1.0 mile(s)		6230 S NORCROSS TUCKER RD, TUCKER, GA, 30084-1200: Radius Analysis Area Group: Radius 3.0 mile(s)		6230 S NORCROSS TUCKER RD, TUCKER, GA, 30084-1200: Radius Analysis Area Group: Radius 5.0 mile(s)	
	Total	%	Total	%	Total	%

Pop-Facts Demographic Quick Facts

2017 Est. Population by Single-Classification Race	22,047	110,329	240,891
--	--------	---------	---------



Race	2017 Est. Population	%	2017 Est. Population	%	2017 Est. Population	%
White Alone	8,481	38.47%	45,292	41.05%	101,940	42.32%
Black or African American Alone	3,164	14.35%	23,187	21.02%	55,844	23.18%
American Indian and Alaska Native Alone	288	1.31%	1,089	0.99%	2,300	0.95%
Asian Alone	1,411	6.40%	11,538	10.46%	26,565	11.03%
Native Hawaiian and Other Pacific Islander Alone	46	0.21%	127	0.12%	258	0.11%
Some Other Race Alone	7,635	34.63%	24,667	22.36%	44,380	18.42%
Two or More Races	1,023	4.64%	4,429	4.01%	9,604	3.99%

2017 Est. Population by Ethnicity (Hispanic or Latino)	22,047	110,329	240,891
Hispanic or Latino	14,332	49,674	91,978
Not Hispanic or Latino	7,715	60,655	148,913

2017 Occupied Housing Units by Tenure	6,914	37,443	85,263
Owner-Occupied	2,499	17,580	41,515
Renter-Occupied	4,415	19,863	43,748

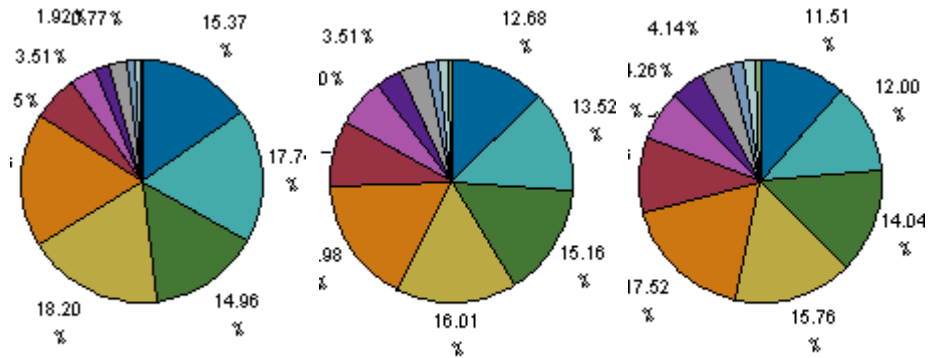
2017 Average Household Size	3.19	2.94	2.82
-----------------------------	------	------	------

2017 Est. Households by Household Income	6,914	37,443	85,263
--	-------	--------	--------

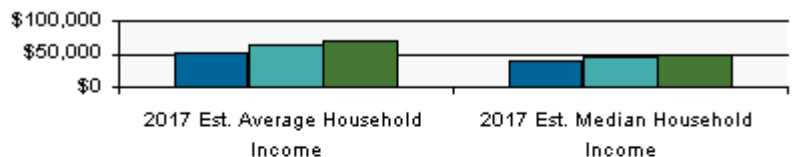
Pop-Facts Demographics

Description	6230 S NORCROSS TUCKER RD, TUCKER, GA, 30084-1200: Radius Analysis Area Group: Radius 1.0 mile(s)		6230 S NORCROSS TUCKER RD, TUCKER, GA, 30084-1200: Radius Analysis Area Group: Radius 3.0 mile(s)		6230 S NORCROSS TUCKER RD, TUCKER, GA, 30084-1200: Radius Analysis Area Group: Radius 5.0 mile(s)	
	Total	%	Total	%	Total	%

- Income < \$15,000
- Income \$15,000 - \$24,999
- Income \$25,000 - \$34,999
- Income \$35,000 - \$49,999
- Income \$50,000 - \$74,999
- Income \$75,000 - \$99,999
- Income \$100,000 - \$124,999
- Income \$125,000 - \$149,999
- Income \$150,000 - \$199,999
- Income \$200,000 - \$249,999
- Income \$250,000 - \$499,999
- Income \$500,000+



Income Category	Radius 1.0 (Total, %)	Radius 3.0 (Total, %)	Radius 5.0 (Total, %)
Income < \$15,000	1,063 (15.37%)	4,747 (12.68%)	9,810 (11.51%)
Income \$15,000 - \$24,999	1,226 (17.74%)	5,062 (13.52%)	10,234 (12.00%)
Income \$25,000 - \$34,999	1,034 (14.96%)	5,676 (15.16%)	11,970 (14.04%)
Income \$35,000 - \$49,999	1,258 (18.20%)	5,994 (16.01%)	13,436 (15.76%)
Income \$50,000 - \$74,999	1,228 (17.76%)	6,359 (16.98%)	14,940 (17.52%)
Income \$75,000 - \$99,999	425 (6.15%)	3,275 (8.75%)	8,666 (10.16%)
Income \$100,000 - \$124,999	242 (3.51%)	2,395 (6.40%)	5,620 (6.59%)
Income \$125,000 - \$149,999	133 (1.92%)	1,313 (3.51%)	3,636 (4.26%)
Income \$150,000 - \$199,999	171 (2.47%)	1,367 (3.65%)	3,527 (4.14%)
Income \$200,000 - \$249,999	62 (0.89%)	571 (1.52%)	1,466 (1.72%)
Income \$250,000 - \$499,999	54 (0.77%)	527 (1.41%)	1,491 (1.75%)
Income \$500,000+	17 (0.25%)	157 (0.42%)	466 (0.55%)



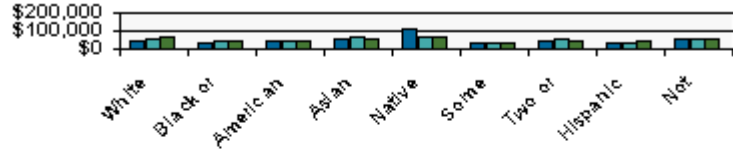
- 6230 S NORCROSS TUCKER RD, TUCKER, GA, 30084-1200: Radius Analysis Area Group: Radius 1.0 mile(s)
- 6230 S NORCROSS TUCKER RD, TUCKER, GA, 30084-1200: Radius Analysis Area Group: Radius 3.0 mile(s)
- 6230 S NORCROSS TUCKER RD, TUCKER, GA, 30084-1200: Radius Analysis Area Group: Radius 5.0 mile(s)

2017 Est. Average Household Income	\$49,988	\$62,040	\$67,318
2017 Est. Median Household Income	\$36,590	\$43,098	\$46,853

2017 Median HH Inc. by Single-Classification Race

Pop-Facts Demographics

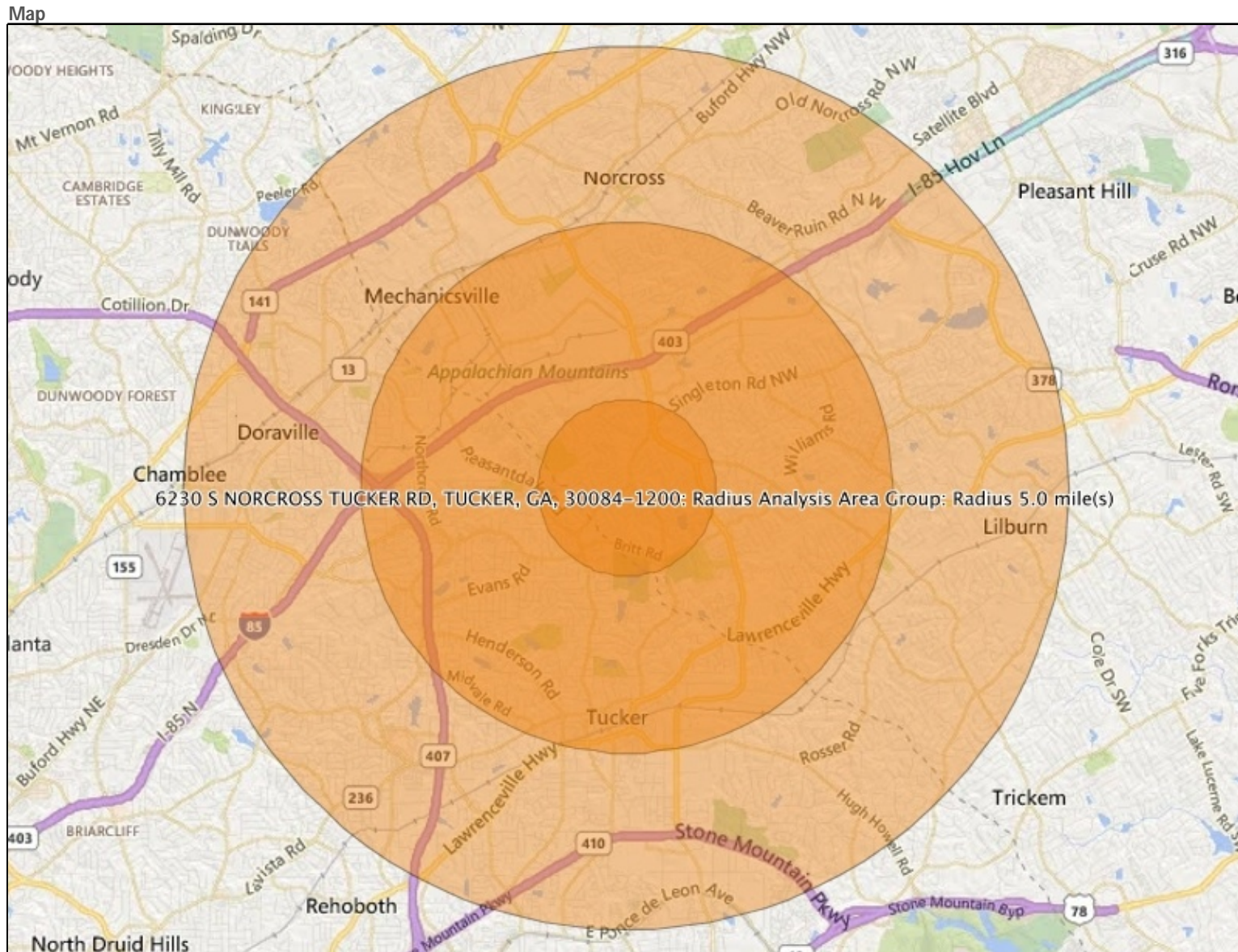
Description	6230 S NORCROSS TUCKER RD, TUCKER, GA, 30084-1200: Radius Analysis Area Group: Radius 1.0 mile(s)		6230 S NORCROSS TUCKER RD, TUCKER, GA, 30084-1200: Radius Analysis Area Group: Radius 3.0 mile(s)		6230 S NORCROSS TUCKER RD, TUCKER, GA, 30084-1200: Radius Analysis Area Group: Radius 5.0 mile(s)	
	Total	%	Total	%	Total	%



■ 6230 S NORCROSS TUCKER RD, TUCKER, GA, 30084-1200: Radius Analysis Area Group: Radius 1.0 mile(s)
■ 6230 S NORCROSS TUCKER RD, TUCKER, GA, 30084-1200: Radius Analysis Area Group: Radius 3.0 mile(s)
■ 6230 S NORCROSS TUCKER RD, TUCKER, GA, 30084-1200: Radius Analysis Area Group: Radius 5.0 mile(s)

White Alone	\$40,411	\$52,315	\$60,352
Black or African American Alone	\$32,899	\$35,948	\$39,349
American Indian and Alaska Native Alone	\$33,780	\$43,645	\$43,478
Asian Alone	\$52,335	\$58,782	\$54,004
Native Hawaiian and Other Pacific Islander Alone	\$108,057	\$64,914	\$62,533
Some Other Race Alone	\$29,906	\$28,694	\$31,939
Two or More Races	\$44,416	\$45,439	\$43,427
Hispanic or Latino	\$31,587	\$32,223	\$34,413
Not Hispanic or Latino	\$44,790	\$50,952	\$53,740

Pop-Facts Demographics



2017 Population (2017 Population) : Index: Descending by Equal Ranges

List of Report Areas by Radius Analysis Area Group

- Index (100~100)
- Index (100~100)
- Index (100~100)
- Index (100~100)
- Index (100~100)

Pop-Facts Demographics

Appendix - Analysis Area details.

6230 S NORCROSS TUCKER RD, TUCKER, GA, 30084-1200: Radius Analysis Area Group: Radius 1.0 mile(s): 33.891671 -84.210513

6230 S NORCROSS TUCKER RD, TUCKER, GA, 30084-1200: Radius Analysis Area Group: Radius 3.0 mile(s): 33.891671 -84.210513

6230 S NORCROSS TUCKER RD, TUCKER, GA, 30084-1200: Radius Analysis Area Group: Radius 5.0 mile(s): 33.891671 -84.210513