

# Pop-Facts Demographics

## Title Page

**Data Version:** 2017 May (Quick Market Insights)

**Report Generation Method:** Single

**Analysis Area:** 7000 JIMMY CARTER BLVD, PEACHTREE CORNERS, GA, 30092-5408

**Reporting Detail:** As Selected

**Include Map:** Yes

**Include Labels:** Yes

**Map Reporting Detail:** As Selected

**Base Map Style:** Bing Road

**Subtotal Method:** Equal Ranges

**Sort Variable:** 2017 Population

**Sort Measure:** Index

**Sort Direction:** Descending

**Color Scheme:** Claritas Standard Theme

**Number of Ranges:** 5

**Include Charts:** Yes

**Analysis Area Detail:** Yes

### Report Sections:

Pop-Facts Summary

Pop-Facts Census Demographic Overview

Pop-Facts Demographic Snapshot

Pop-Facts Population Quick Facts

Pop-Facts Household Quick Facts

Pop-Facts Demographic Quick Facts

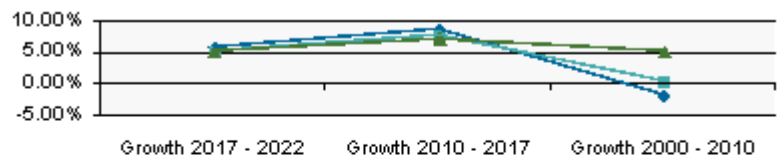
# Pop-Facts Demographics

Description	7000 JIMMY CARTER BLVD, PEACHTREE CORNERS, GA, 30092-5408: Radius Analysis Area Group: Radius 1.0 mile(s)		7000 JIMMY CARTER BLVD, PEACHTREE CORNERS, GA, 30092-5408: Radius Analysis Area Group: Radius 3.0 mile(s)		7000 JIMMY CARTER BLVD, PEACHTREE CORNERS, GA, 30092-5408: Radius Analysis Area Group: Radius 5.0 mile(s)	
	Total	%	Total	%	Total	%

## Pop-Facts Summary

### Population

2022 Projection	11,699		80,979		252,482	
2017 Estimate	11,068		76,979		240,247	
2010 Census	10,181		71,510		224,207	
2000 Census	10,389		71,242		213,331	

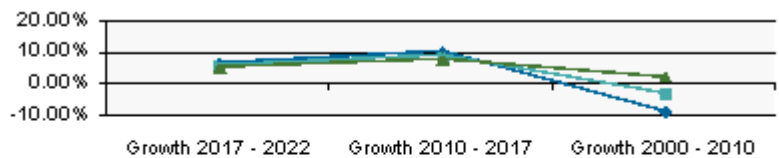


- 7000 JIMMY CARTER BLVD, PEACHTREE CORNERS, GA, 30092-5408: Radius Analysis Area Group: Radius 1.0 mile(s)
- 7000 JIMMY CARTER BLVD, PEACHTREE CORNERS, GA, 30092-5408: Radius Analysis Area Group: Radius 3.0 mile(s)
- 7000 JIMMY CARTER BLVD, PEACHTREE CORNERS, GA, 30092-5408: Radius Analysis Area Group: Radius 5.0 mile(s)

Growth 2017 - 2022		5.70%		5.20%		5.09%
Growth 2010 - 2017		8.71%		7.65%		7.15%
Growth 2000 - 2010		(2.00%)		0.38%		5.10%

### Households

2022 Projection	4,893		29,406		91,856	
2017 Estimate	4,607		27,827		87,113	
2010 Census	4,188		25,576		80,706	
2000 Census	4,597		26,449		79,177	



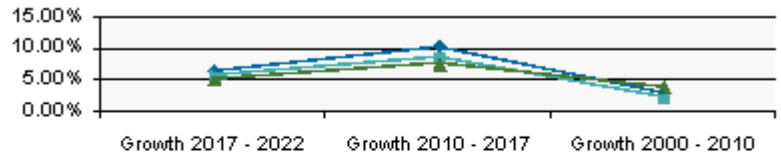
- 7000 JIMMY CARTER BLVD, PEACHTREE CORNERS, GA, 30092-5408: Radius Analysis Area Group: Radius 1.0 mile(s)
- 7000 JIMMY CARTER BLVD, PEACHTREE CORNERS, GA, 30092-5408: Radius Analysis Area Group: Radius 3.0 mile(s)
- 7000 JIMMY CARTER BLVD, PEACHTREE CORNERS, GA, 30092-5408: Radius Analysis Area Group: Radius 5.0 mile(s)

Growth 2017 - 2022		6.20%		5.68%		5.44%
--------------------	--	-------	--	-------	--	-------

## Pop-Facts Demographics

Description	7000 JIMMY CARTER BLVD, PEACHTREE CORNERS, GA, 30092-5408: Radius Analysis Area Group: Radius 1.0 mile(s)		7000 JIMMY CARTER BLVD, PEACHTREE CORNERS, GA, 30092-5408: Radius Analysis Area Group: Radius 3.0 mile(s)		7000 JIMMY CARTER BLVD, PEACHTREE CORNERS, GA, 30092-5408: Radius Analysis Area Group: Radius 5.0 mile(s)	
	Total	%	Total	%	Total	%
Growth 2010 - 2017		10.02%		8.80%		7.94%
Growth 2000 - 2010		(8.91%)		(3.30%)		1.93%

Family Households						
2022 Projection		2,560		19,377		60,502
2017 Estimate		2,407		18,365		57,519
2010 Census		2,183		16,939		53,544
2000 Census		2,121		16,586		51,532



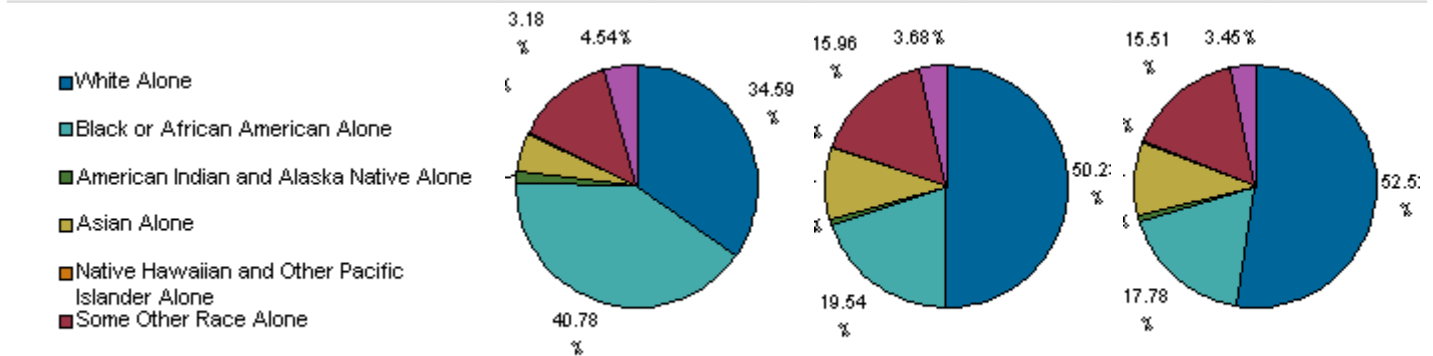
- 7000 JIMMY CARTER BLVD, PEACHTREE CORNERS, GA, 30092-5408: Radius Analysis Area Group: Radius 1.0 mile(s)
- 7000 JIMMY CARTER BLVD, PEACHTREE CORNERS, GA, 30092-5408: Radius Analysis Area Group: Radius 3.0 mile(s)
- 7000 JIMMY CARTER BLVD, PEACHTREE CORNERS, GA, 30092-5408: Radius Analysis Area Group: Radius 5.0 mile(s)

Growth 2017 - 2022		6.37%		5.51%		5.19%
Growth 2010 - 2017		10.24%		8.41%		7.42%
Growth 2000 - 2010		2.91%		2.13%		3.90%

# Pop-Facts Demographics

Description	7000 JIMMY CARTER BLVD, PEACHTREE CORNERS, GA, 30092-5408: Radius Analysis Area Group: Radius 1.0 mile(s)		7000 JIMMY CARTER BLVD, PEACHTREE CORNERS, GA, 30092-5408: Radius Analysis Area Group: Radius 3.0 mile(s)		7000 JIMMY CARTER BLVD, PEACHTREE CORNERS, GA, 30092-5408: Radius Analysis Area Group: Radius 5.0 mile(s)	
	Total	%	Total	%	Total	%

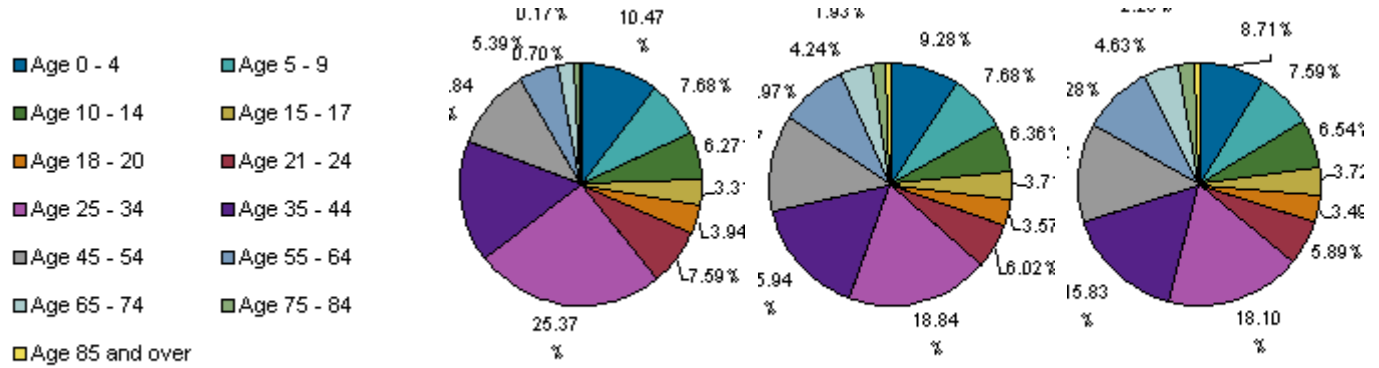
## Pop-Facts Census Demographic Overview



White Alone	3,521	34.59%	35,917	50.23%	117,757	52.52%
Black or African American Alone	4,152	40.78%	13,974	19.54%	39,859	17.78%
American Indian and Alaska Native Alone	166	1.63%	581	0.81%	1,789	0.80%
Asian Alone	529	5.20%	6,899	9.65%	22,073	9.84%
Native Hawaiian and Other Pacific Islander Alone	8	0.08%	96	0.13%	220	0.10%
Some Other Race Alone	1,342	13.18%	11,415	15.96%	34,782	15.51%
Two or More Races	463	4.54%	2,629	3.68%	7,728	3.45%
<b>2010 Population by Ethnicity</b>	<b>10,181</b>		<b>71,510</b>		<b>224,207</b>	
Hispanic or Latino	3,495	65.67%	24,425	65.84%	72,509	67.66%
Not Hispanic or Latino	6,686	34.33%	47,084	34.16%	151,698	32.34%
<b>2010 Hispanic or Latino Pop by Single-Class. Race</b>	<b>3,495</b>		<b>24,425</b>		<b>72,509</b>	
White Alone	1,685	48.23%	10,663	43.66%	30,713	42.36%
Black or African American Alone	150	4.28%	608	2.49%	1,785	2.46%
American Indian and Alaska Native Alone	142	4.06%	479	1.96%	1,437	1.98%
Asian Alone	8	0.24%	68	0.28%	195	0.27%
Native Hawaiian and Other Pacific Islander Alone	2	0.06%	56	0.23%	113	0.16%
Some Other Race Alone	1,290	36.91%	11,198	45.85%	34,253	47.24%
Two or More Races	217	6.22%	1,354	5.54%	4,012	5.53%
<b>2010 Population by Sex</b>	<b>10,181</b>		<b>71,510</b>		<b>224,207</b>	
Male	5,081	49.91%	36,588	51.16%	114,846	51.22%
Female	5,100	50.09%	34,922	48.84%	109,361	48.78%
Male/Female Ratio	1.00		1.05		1.05	

# Pop-Facts Demographics

Description	7000 JIMMY CARTER BLVD, PEACHTREE CORNERS, GA, 30092-5408: Radius Analysis Area Group: Radius 1.0 mile(s)		7000 JIMMY CARTER BLVD, PEACHTREE CORNERS, GA, 30092-5408: Radius Analysis Area Group: Radius 3.0 mile(s)		7000 JIMMY CARTER BLVD, PEACHTREE CORNERS, GA, 30092-5408: Radius Analysis Area Group: Radius 5.0 mile(s)	
	Total	%	Total	%	Total	%
<b>2010 Population by Age</b>	<b>10,181</b>		<b>71,510</b>		<b>224,207</b>	

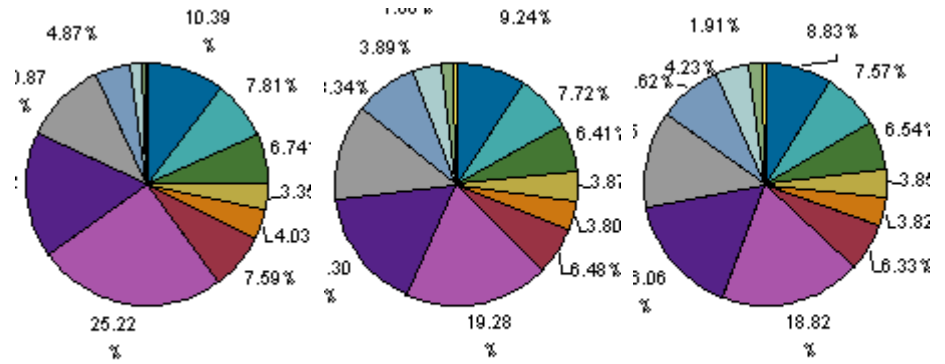


Age 0 - 4	1,066	10.47%	6,639	9.28%	19,528	8.71%
Age 5 - 9	782	7.68%	5,489	7.68%	17,019	7.59%
Age 10 - 14	638	6.27%	4,549	6.36%	14,660	6.54%
Age 15 - 17	337	3.31%	2,656	3.71%	8,346	3.72%
Age 18 - 20	401	3.94%	2,553	3.57%	7,829	3.49%
Age 21 - 24	773	7.59%	4,305	6.02%	13,198	5.89%
Age 25 - 34	2,583	25.37%	13,470	18.84%	40,587	18.10%
Age 35 - 44	1,640	16.11%	11,402	15.94%	35,482	15.83%
Age 45 - 54	1,104	10.84%	9,206	12.87%	29,872	13.32%
Age 55 - 64	548	5.39%	6,413	8.97%	20,804	9.28%
Age 65 - 74	219	2.16%	3,029	4.24%	10,378	4.63%
Age 75 - 84	71	0.70%	1,378	1.93%	5,051	2.25%
Age 85 and over	18	0.17%	421	0.59%	1,454	0.65%
Age 16 and over	7,579	74.44%	53,942	75.43%	170,224	75.92%
Age 18 and over	7,359	72.27%	52,177	72.96%	164,654	73.44%
Age 21 and over	6,957	68.33%	49,624	69.39%	156,825	69.95%
Age 65 and over	308	3.03%	4,828	6.75%	16,883	7.53%
<b>2010 Median Age</b>	<b>29.2</b>		<b>32.1</b>		<b>32.8</b>	
<b>2010 Male Population by Age</b>	<b>5,081</b>		<b>36,588</b>		<b>114,846</b>	

# Pop-Facts Demographics

Description	7000 JIMMY CARTER BLVD, PEACHTREE CORNERS, GA, 30092-5408: Radius Analysis Area Group: Radius 1.0 mile(s)		7000 JIMMY CARTER BLVD, PEACHTREE CORNERS, GA, 30092-5408: Radius Analysis Area Group: Radius 3.0 mile(s)		7000 JIMMY CARTER BLVD, PEACHTREE CORNERS, GA, 30092-5408: Radius Analysis Area Group: Radius 5.0 mile(s)	
	Total	%	Total	%	Total	%

- Age 0 - 4
- Age 5 - 9
- Age 10 - 14
- Age 15 - 17
- Age 18 - 20
- Age 21 - 24
- Age 25 - 34
- Age 35 - 44
- Age 45 - 54
- Age 55 - 64
- Age 65 - 74
- Age 75 - 84
- Age 85 and over

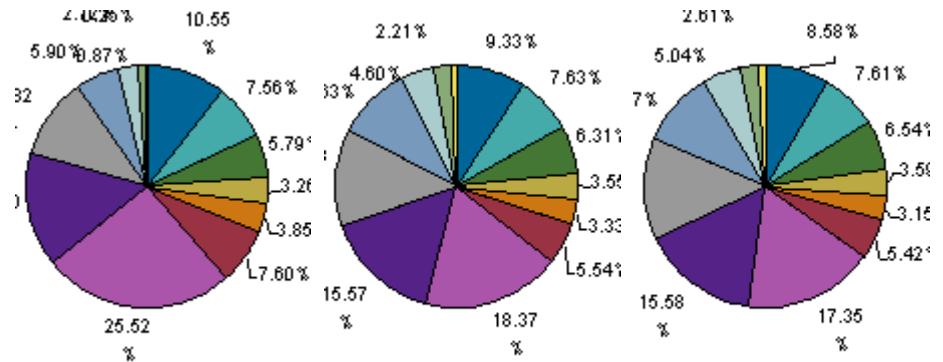


Age 0 - 4	528	10.39%	3,380	9.24%	10,141	8.83%
Age 5 - 9	397	7.81%	2,823	7.72%	8,699	7.57%
Age 10 - 14	343	6.74%	2,347	6.41%	7,508	6.54%
Age 15 - 17	170	3.35%	1,417	3.87%	4,417	3.85%
Age 18 - 20	205	4.03%	1,390	3.80%	4,389	3.82%
Age 21 - 24	385	7.59%	2,370	6.48%	7,271	6.33%
Age 25 - 34	1,281	25.22%	7,054	19.28%	21,609	18.82%
Age 35 - 44	860	16.92%	5,963	16.30%	18,439	16.06%
Age 45 - 54	552	10.87%	4,622	12.63%	14,876	12.95%
Age 55 - 64	247	4.87%	3,051	8.34%	9,902	8.62%
Age 65 - 74	80	1.58%	1,422	3.89%	4,862	4.23%
Age 75 - 84	27	0.53%	607	1.66%	2,199	1.91%
Age 85 and over	5	0.10%	143	0.39%	535	0.47%
<b>2010 Median Age, Male</b>	<b>29.0</b>		<b>31.5</b>		<b>31.9</b>	
<b>2010 Female Population by Age</b>	<b>5,100</b>		<b>34,922</b>		<b>109,361</b>	

# Pop-Facts Demographics

Description	7000 JIMMY CARTER BLVD, PEACHTREE CORNERS, GA, 30092-5408: Radius Analysis Area Group: Radius 1.0 mile(s)		7000 JIMMY CARTER BLVD, PEACHTREE CORNERS, GA, 30092-5408: Radius Analysis Area Group: Radius 3.0 mile(s)		7000 JIMMY CARTER BLVD, PEACHTREE CORNERS, GA, 30092-5408: Radius Analysis Area Group: Radius 5.0 mile(s)	
	Total	%	Total	%	Total	%

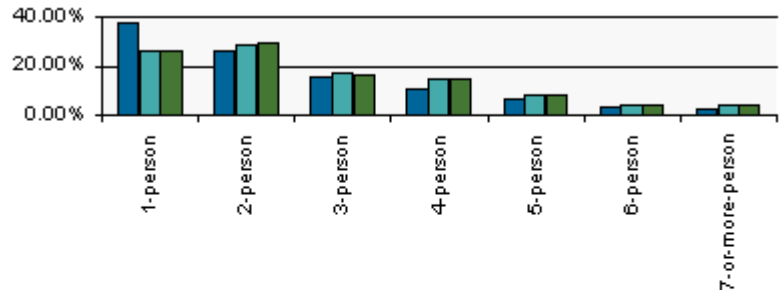
- Age 0 - 4
- Age 5 - 9
- Age 10 - 14
- Age 15 - 17
- Age 18 - 20
- Age 21 - 24
- Age 25 - 34
- Age 35 - 44
- Age 45 - 54
- Age 55 - 64
- Age 65 - 74
- Age 75 - 84
- Age 85 and over



Age 0 - 4	538	10.55%	3,260	9.33%	9,387	8.58%
Age 5 - 9	386	7.56%	2,665	7.63%	8,320	7.61%
Age 10 - 14	295	5.79%	2,202	6.31%	7,152	6.54%
Age 15 - 17	166	3.26%	1,239	3.55%	3,928	3.59%
Age 18 - 20	196	3.85%	1,163	3.33%	3,440	3.15%
Age 21 - 24	388	7.60%	1,936	5.54%	5,927	5.42%
Age 25 - 34	1,302	25.52%	6,416	18.37%	18,978	17.35%
Age 35 - 44	780	15.30%	5,439	15.57%	17,043	15.58%
Age 45 - 54	552	10.82%	4,584	13.13%	14,995	13.71%
Age 55 - 64	301	5.90%	3,362	9.63%	10,902	9.97%
Age 65 - 74	139	2.72%	1,607	4.60%	5,516	5.04%
Age 75 - 84	44	0.87%	771	2.21%	2,852	2.61%
Age 85 and over	13	0.25%	278	0.79%	919	0.84%
<b>2010 Median Age, Female</b>	<b>29.5</b>		<b>32.8</b>		<b>33.7</b>	
<b>2010 Households by Household Type</b>	<b>4,188</b>		<b>25,576</b>		<b>80,706</b>	
Family Households	2,183	52.13%	16,939	66.23%	53,544	66.34%
Nonfamily Households	2,004	47.87%	8,637	33.77%	27,162	33.66%
<b>2010 Group Quarters Population</b>	<b>0</b>		<b>7</b>		<b>125</b>	
<b>2010 Hispanic or Latino Households</b>	<b>935</b>		<b>5,953</b>		<b>17,370</b>	
<b>2010 Households by Household Size</b>	<b>4,188</b>		<b>25,576</b>		<b>80,706</b>	

## Pop-Facts Demographics

Description	7000 JIMMY CARTER BLVD, PEACHTREE CORNERS, GA, 30092-5408: Radius Analysis Area Group: Radius 1.0 mile(s)		7000 JIMMY CARTER BLVD, PEACHTREE CORNERS, GA, 30092-5408: Radius Analysis Area Group: Radius 3.0 mile(s)		7000 JIMMY CARTER BLVD, PEACHTREE CORNERS, GA, 30092-5408: Radius Analysis Area Group: Radius 5.0 mile(s)	
	Total	%	Total	%	Total	%



■	7000 JIMMY CARTER BLVD, PEACHTREE CORNERS, GA, 30092-5408: Radius Analysis Area Group: Radius 1.0 mile(s)
■	7000 JIMMY CARTER BLVD, PEACHTREE CORNERS, GA, 30092-5408: Radius Analysis Area Group: Radius 3.0 mile(s)
■	7000 JIMMY CARTER BLVD, PEACHTREE CORNERS, GA, 30092-5408: Radius Analysis Area Group: Radius 5.0 mile(s)

1-person	1,566	37.38%	6,515	25.47%	20,541	25.45%
2-person	1,062	25.36%	7,288	28.50%	23,579	29.22%
3-person	636	15.20%	4,211	16.47%	12,993	16.10%
4-person	440	10.51%	3,754	14.68%	11,858	14.69%
5-person	259	6.18%	1,955	7.64%	6,159	7.63%
6-person	124	2.95%	934	3.65%	2,816	3.49%
7-or-more-person	101	2.42%	919	3.59%	2,760	3.42%
<b>2010 Households by Type by Presence of Children</b>	<b>4,188</b>		<b>25,576</b>		<b>80,706</b>	
2010 Fam HHs, Own Kids, Married Couple Fam	607	14.49%	5,988	23.41%	19,227	23.82%
2010 Fam HHs, Own Kids, Other Fam HH, Male HHldr	174	4.16%	802	3.14%	2,356	2.92%
2010 Fam HHs, Own Kids, Other Fam HH, Female HHldr	558	13.32%	2,279	8.91%	6,551	8.12%
2010 Fam HHs, No Own Kids, Married Couple Fam	448	10.69%	5,646	22.07%	18,632	23.09%
2010 Fam HHs, No Own Kids, Other Fam HH, Male HHldr	188	4.49%	999	3.91%	2,925	3.62%
2010 Fam HHs, No Own Kids, Other Fam HH, Female HHldr	209	4.99%	1,226	4.79%	3,852	4.77%
2010 NonFam HHs	2,004	47.87%	8,637	33.77%	27,162	33.66%
<b>2010 Households by Presence of People Under Age 18</b>	<b>4,188</b>		<b>25,576</b>		<b>80,706</b>	
HHs with 1 or More People Under Age 18:	1,486	35.47%	9,979	39.02%	30,873	38.25%
Married-Couple Family	629	42.35%	6,271	62.84%	20,090	65.07%
Other Family, Male Householder	216	14.55%	1,016	10.18%	2,969	9.62%



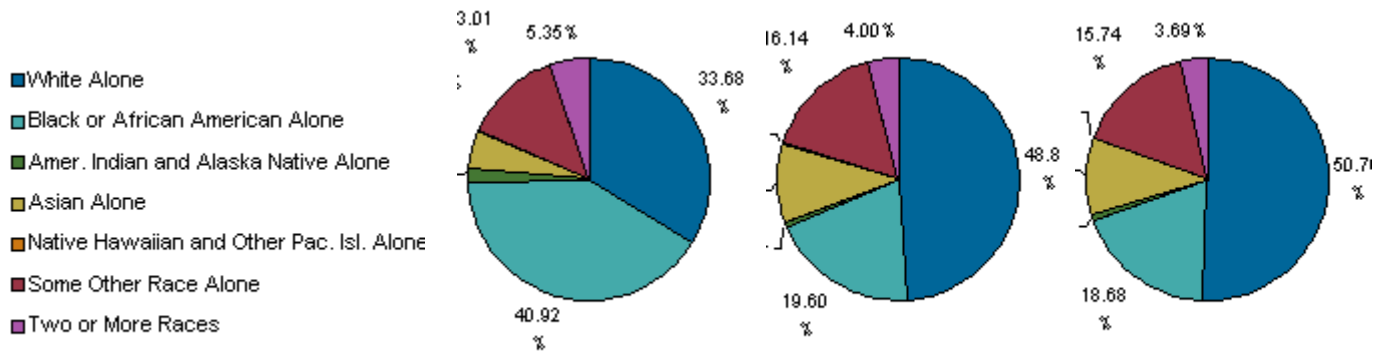
## Pop-Facts Demographics

Description	7000 JIMMY CARTER BLVD, PEACHTREE CORNERS, GA, 30092-5408: Radius Analysis Area Group: Radius 1.0 mile(s)		7000 JIMMY CARTER BLVD, PEACHTREE CORNERS, GA, 30092-5408: Radius Analysis Area Group: Radius 3.0 mile(s)		7000 JIMMY CARTER BLVD, PEACHTREE CORNERS, GA, 30092-5408: Radius Analysis Area Group: Radius 5.0 mile(s)	
	Total	%	Total	%	Total	%
Other Family, Female Householder	611	41.14%	2,562	25.67%	7,403	23.98%
Nonfamily, Male Householder	26	1.73%	100	1.00%	311	1.01%
Nonfamily, Female Householder	3	0.23%	31	0.31%	100	0.32%
Households with No People Under Age 18:	2,702	64.53%	15,597	60.98%	49,833	61.75%
Married-Couple Family	425	15.74%	5,362	34.38%	17,770	35.66%
Other Family, Male Householder	146	5.40%	785	5.04%	2,313	4.64%
Other Family, Female Householder	156	5.76%	943	6.05%	3,000	6.02%
Nonfamily, Male Householder	1,018	37.68%	4,349	27.89%	13,218	26.53%
Nonfamily, Female Householder	957	37.68%	4,157	27.89%	13,533	26.53%
<b>2010 Occupied Housing Units by Tenure</b>	<b>4,188</b>		<b>25,576</b>		<b>80,706</b>	
Owner Occupied	835	19.94%	12,668	49.53%	43,540	53.95%
Renter Occupied	3,353	80.06%	12,908	50.47%	37,166	46.05%

# Pop-Facts Demographics

Description	7000 JIMMY CARTER BLVD, PEACHTREE CORNERS, GA, 30092-5408: Radius Analysis Area Group: Radius 1.0 mile(s)		7000 JIMMY CARTER BLVD, PEACHTREE CORNERS, GA, 30092-5408: Radius Analysis Area Group: Radius 3.0 mile(s)		7000 JIMMY CARTER BLVD, PEACHTREE CORNERS, GA, 30092-5408: Radius Analysis Area Group: Radius 5.0 mile(s)	
	Total	%	Total	%	Total	%

Pop-Facts Demographic Snapshot						
2017 Est. Population by Single-Classification Race	11,068		76,979		240,247	



Race	1.0 mile	3.0 miles	5.0 miles
White Alone	3,728	37,577	121,937
Black or African American Alone	4,529	15,088	44,886
Amer. Indian and Alaska Native Alone	212	638	1,918
Asian Alone	557	8,080	24,618
Native Hawaiian and Other Pac. Isl. Alone	10	97	221
Some Other Race Alone	1,440	12,423	37,813
Two or More Races	592	3,076	8,854

2017 Est. Population by Hispanic or Latino Origin	11,068		76,979		240,247	
Not Hispanic or Latino	7,018	63.41%	50,679	65.84%	162,753	67.74%
Hispanic or Latino	4,050	36.59%	26,300	34.16%	77,494	32.26%
Mexican	2,701	66.70%	16,832	64.00%	45,814	59.12%
Puerto Rican	173	4.26%	778	2.96%	2,168	2.80%
Cuban	47	1.15%	352	1.34%	1,080	1.39%
All Other Hispanic or Latino	1,129	27.88%	8,338	31.70%	28,432	36.69%

2017 Est. Hisp. or Latino Pop by Single-Class. Race	4,050		26,300		77,494	
White Alone	2,018	49.82%	11,394	43.32%	32,209	41.56%
Black or African American Alone	175	4.33%	630	2.40%	1,918	2.47%
American Indian and Alaska Native Alone	186	4.59%	537	2.04%	1,553	2.00%
Asian Alone	11	0.27%	73	0.28%	216	0.28%

## Pop-Facts Demographics

Description	7000 JIMMY CARTER BLVD, PEACHTREE CORNERS, GA, 30092-5408: Radius Analysis Area Group: Radius 1.0 mile(s)		7000 JIMMY CARTER BLVD, PEACHTREE CORNERS, GA, 30092-5408: Radius Analysis Area Group: Radius 3.0 mile(s)		7000 JIMMY CARTER BLVD, PEACHTREE CORNERS, GA, 30092-5408: Radius Analysis Area Group: Radius 5.0 mile(s)	
	Total	%	Total	%	Total	%
Native Hawaiian and Other Pacific Islander Alone	2	0.05%	54	0.20%	112	0.15%
Some Other Race Alone	1,384	34.17%	12,175	46.29%	37,243	48.06%
Two or More Races	274	6.77%	1,437	5.46%	4,243	5.48%

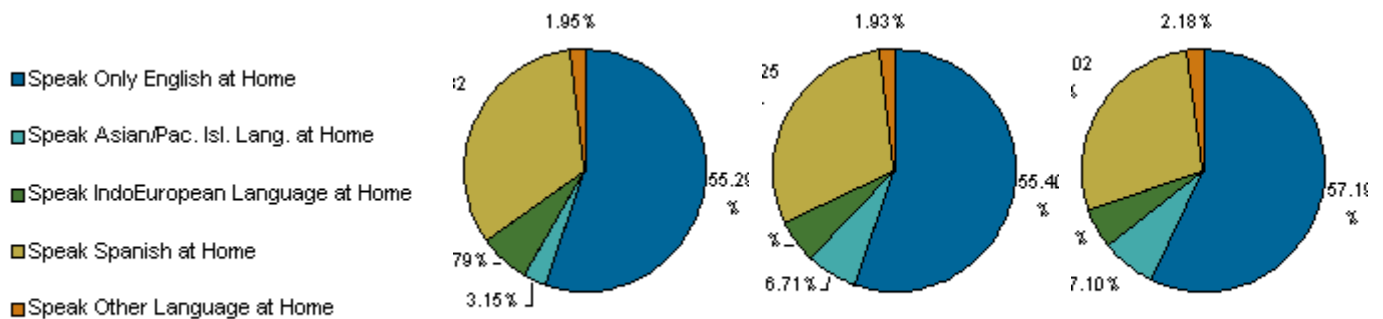
2017 Est. Pop by Race, Asian Alone, by Category	557		8,080		24,618	
Chinese, except Taiwanese	124	22.28%	1,675	20.73%	5,453	22.15%
Filipino	6	1.12%	63	0.78%	368	1.49%
Japanese	0	0.00%	62	0.76%	333	1.35%
Asian Indian	177	31.75%	1,782	22.06%	4,385	17.81%
Korean	97	17.48%	1,194	14.77%	4,082	16.58%
Vietnamese	113	20.25%	1,663	20.59%	5,504	22.36%
Cambodian	0	0.00%	140	1.73%	440	1.79%
Hmong	0	0.00%	29	0.35%	107	0.43%
Laotian	4	0.72%	93	1.15%	161	0.65%
Thai	0	0.00%	10	0.12%	177	0.72%
All Other Asian Races Including 2+ Category	36	6.40%	1,370	16.96%	3,610	14.66%

2017 Est. Population by Ancestry	11,068		76,979		240,247	
Arab	94	0.85%	424	0.55%	1,753	0.73%
Czech	1	0.01%	46	0.06%	178	0.07%
Danish	4	0.04%	137	0.18%	336	0.14%
Dutch	9	0.08%	258	0.34%	641	0.27%
English	332	3.00%	3,438	4.47%	12,413	5.17%
French (except Basque)	31	0.28%	479	0.62%	2,171	0.90%
French Canadian	2	0.02%	51	0.07%	214	0.09%
German	198	1.79%	2,646	3.44%	9,546	3.97%
Greek	3	0.03%	171	0.22%	718	0.30%
Hungarian	39	0.35%	106	0.14%	324	0.13%
Irish	203	1.84%	2,370	3.08%	8,257	3.44%
Italian	162	1.46%	1,446	1.88%	4,617	1.92%
Lithuanian	7	0.06%	70	0.09%	145	0.06%
United States or American	186	1.68%	3,387	4.40%	10,774	4.48%
Norwegian	0	0.00%	238	0.31%	648	0.27%
Polish	43	0.39%	612	0.79%	1,910	0.79%

## Pop-Facts Demographics

Description	7000 JIMMY CARTER BLVD, PEACHTREE CORNERS, GA, 30092-5408: Radius Analysis Area Group: Radius 1.0 mile(s)		7000 JIMMY CARTER BLVD, PEACHTREE CORNERS, GA, 30092-5408: Radius Analysis Area Group: Radius 3.0 mile(s)		7000 JIMMY CARTER BLVD, PEACHTREE CORNERS, GA, 30092-5408: Radius Analysis Area Group: Radius 5.0 mile(s)	
	Total	%	Total	%	Total	%
Portuguese	60	0.54%	88	0.11%	143	0.06%
Russian	26	0.24%	588	0.76%	2,071	0.86%
Scottish	29	0.26%	698	0.91%	2,855	1.19%
Scotch-Irish	17	0.15%	474	0.62%	1,948	0.81%
Slovak	43	0.39%	105	0.14%	147	0.06%
Subsaharan African	848	7.66%	2,467	3.21%	6,196	2.58%
Swedish	5	0.05%	252	0.33%	1,022	0.43%
Swiss	2	0.02%	20	0.03%	137	0.06%
Ukrainian	70	0.63%	241	0.31%	578	0.24%
Welsh	11	0.10%	109	0.14%	209	0.09%
West Indian (except Hisp. groups)	217	1.96%	767	1.00%	2,323	0.97%
Other ancestries	7,299	65.94%	48,289	62.73%	145,449	60.54%
Ancestry Unclassified	1,126	10.17%	7,001	9.10%	22,523	9.38%

2017 Est. Pop Age 5+ by Language Spoken At Home	10,100	70,662	221,364
---	--------	--------	---------



Speak Only English at Home	5,584	55.29%	39,146	55.40%	126,592	57.19%
Speak Asian/Pac. Isl. Lang. at Home	318	3.15%	4,743	6.71%	15,726	7.10%
Speak IndoEuropean Language at Home	686	6.79%	4,033	5.71%	12,184	5.50%
Speak Spanish at Home	3,315	32.82%	21,374	30.25%	62,034	28.02%
Speak Other Language at Home	197	1.95%	1,366	1.93%	4,829	2.18%

2017 Est. Population by Sex	11,068	76,979	240,247			
Male	5,485	49.56%	39,012	50.68%	121,826	50.71%
Female	5,583	50.44%	37,967	49.32%	118,421	49.29%

## Pop-Facts Demographics

Description	7000 JIMMY CARTER BLVD, PEACHTREE CORNERS, GA, 30092-5408: Radius Analysis Area Group: Radius 1.0 mile(s)		7000 JIMMY CARTER BLVD, PEACHTREE CORNERS, GA, 30092-5408: Radius Analysis Area Group: Radius 3.0 mile(s)		7000 JIMMY CARTER BLVD, PEACHTREE CORNERS, GA, 30092-5408: Radius Analysis Area Group: Radius 5.0 mile(s)	
	Total	%	Total	%	Total	%
<b>2017 Est. Population by Age</b>	<b>11,068</b>		<b>76,979</b>		<b>240,247</b>	
Age 0 - 4	968	8.74%	6,317	8.21%	18,883	7.86%
Age 5 - 9	931	8.42%	6,076	7.89%	18,247	7.59%
Age 10 - 14	825	7.45%	5,739	7.46%	17,544	7.30%
Age 15 - 17	437	3.94%	3,053	3.97%	9,620	4.00%
Age 18 - 20	381	3.44%	2,705	3.51%	8,576	3.57%
Age 21 - 24	482	4.35%	3,496	4.54%	11,132	4.63%
Age 25 - 34	2,406	21.74%	12,552	16.31%	38,483	16.02%
Age 35 - 44	1,942	17.55%	11,995	15.58%	36,184	15.06%
Age 45 - 54	1,344	12.14%	10,150	13.19%	32,241	13.42%
Age 55 - 64	819	7.40%	7,860	10.21%	25,735	10.71%
Age 65 - 74	389	3.51%	4,640	6.03%	15,410	6.41%
Age 75 - 84	119	1.07%	1,846	2.40%	6,264	2.61%
Age 85 and over	27	0.25%	551	0.72%	1,929	0.80%
Age 16 and over	8,201	74.10%	57,844	75.14%	182,418	75.93%
Age 18 and over	7,908	71.45%	55,794	72.48%	175,953	73.24%
Age 21 and over	7,527	68.01%	53,090	68.97%	167,378	69.67%
Age 65 and over	535	4.83%	7,037	9.14%	23,603	9.82%
<b>2017 Est. Median Age</b>	<b>31.3</b>		<b>33.8</b>		<b>34.4</b>	
<b>2017 Est. Average Age</b>	<b>31.6</b>		<b>34.7</b>		<b>35.3</b>	

<b>2017 Est. Male Population by Age</b>	<b>5,485</b>		<b>39,012</b>		<b>121,826</b>	
Age 0 - 4	478	8.71%	3,225	8.27%	9,731	7.99%
Age 5 - 9	467	8.51%	3,073	7.88%	9,339	7.67%
Age 10 - 14	421	7.67%	2,929	7.51%	8,933	7.33%
Age 15 - 17	230	4.18%	1,601	4.10%	5,038	4.14%
Age 18 - 20	198	3.60%	1,442	3.70%	4,599	3.78%
Age 21 - 24	245	4.46%	1,865	4.78%	6,027	4.95%
Age 25 - 34	1,171	21.35%	6,626	16.99%	20,382	16.73%
Age 35 - 44	980	17.87%	6,105	15.65%	18,423	15.12%
Age 45 - 54	693	12.64%	5,170	13.25%	16,310	13.39%
Age 55 - 64	389	7.09%	3,829	9.82%	12,437	10.21%
Age 65 - 74	164	2.99%	2,125	5.45%	7,107	5.83%
Age 75 - 84	43	0.78%	817	2.09%	2,775	2.28%
Age 85 and over	8	0.14%	204	0.52%	725	0.59%

## Pop-Facts Demographics

Description	7000 JIMMY CARTER BLVD, PEACHTREE CORNERS, GA, 30092-5408: Radius Analysis Area Group: Radius 1.0 mile(s)		7000 JIMMY CARTER BLVD, PEACHTREE CORNERS, GA, 30092-5408: Radius Analysis Area Group: Radius 3.0 mile(s)		7000 JIMMY CARTER BLVD, PEACHTREE CORNERS, GA, 30092-5408: Radius Analysis Area Group: Radius 5.0 mile(s)	
	Total	%	Total	%	Total	%
2017 Est. Median Age, Male	31.0		33.1		33.5	
2017 Est. Average Age, Male	31.1		34.0		34.5	

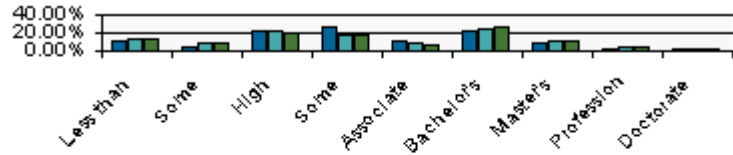
2017 Est. Female Population by Age	5,583		37,967		118,421	
Age 0 - 4	490	8.77%	3,092	8.14%	9,153	7.73%
Age 5 - 9	465	8.32%	3,003	7.91%	8,908	7.52%
Age 10 - 14	404	7.24%	2,810	7.40%	8,611	7.27%
Age 15 - 17	207	3.71%	1,452	3.82%	4,581	3.87%
Age 18 - 20	183	3.28%	1,262	3.32%	3,976	3.36%
Age 21 - 24	237	4.25%	1,631	4.30%	5,105	4.31%
Age 25 - 34	1,235	22.11%	5,925	15.61%	18,101	15.29%
Age 35 - 44	962	17.24%	5,890	15.51%	17,761	15.00%
Age 45 - 54	650	11.64%	4,980	13.12%	15,931	13.45%
Age 55 - 64	430	7.70%	4,031	10.62%	13,297	11.23%
Age 65 - 74	225	4.03%	2,515	6.62%	8,303	7.01%
Age 75 - 84	76	1.37%	1,029	2.71%	3,489	2.95%
Age 85 and over	19	0.35%	346	0.91%	1,204	1.02%
<b>2017 Est. Median Age, Female</b>	<b>31.5</b>		<b>34.7</b>		<b>35.4</b>	
<b>2017 Est. Average Age, Female</b>	<b>32.1</b>		<b>35.4</b>		<b>36.1</b>	

2017 Est. Pop Age 15+ by Marital Status	8,344		58,847		185,573	
Total, Never Married	4,209	50.45%	22,240	37.79%	69,181	37.28%
Males, Never Married	2,330	27.92%	12,370	21.02%	38,094	20.53%
Females, Never Married	1,879	22.52%	9,870	16.77%	31,087	16.75%
Married, Spouse present	2,422	29.02%	25,401	43.16%	79,957	43.09%
Married, Spouse absent	767	9.19%	3,800	6.46%	12,295	6.63%
Widowed	258	3.09%	1,955	3.32%	6,664	3.59%
Males Widowed	66	0.79%	515	0.88%	1,564	0.84%
Females Widowed	192	2.30%	1,440	2.45%	5,100	2.75%
Divorced	688	8.25%	5,451	9.26%	17,475	9.42%
Males Divorced	242	2.91%	2,188	3.72%	7,174	3.87%
Females Divorced	446	5.34%	3,264	5.55%	10,301	5.55%

2017 Est. Pop Age 25+ by Edu. Attainment	7,045		49,593		156,246	
--	-------	--	--------	--	---------	--

## Pop-Facts Demographics

Description	7000 JIMMY CARTER BLVD, PEACHTREE CORNERS, GA, 30092-5408: Radius Analysis Area Group: Radius 1.0 mile(s)		7000 JIMMY CARTER BLVD, PEACHTREE CORNERS, GA, 30092-5408: Radius Analysis Area Group: Radius 3.0 mile(s)		7000 JIMMY CARTER BLVD, PEACHTREE CORNERS, GA, 30092-5408: Radius Analysis Area Group: Radius 5.0 mile(s)	
	Total	%	Total	%	Total	%



Education Attainment Level	7000 JIMMY CARTER BLVD, PEACHTREE CORNERS, GA, 30092-5408: Radius Analysis Area Group: Radius 1.0 mile(s)	7000 JIMMY CARTER BLVD, PEACHTREE CORNERS, GA, 30092-5408: Radius Analysis Area Group: Radius 3.0 mile(s)	7000 JIMMY CARTER BLVD, PEACHTREE CORNERS, GA, 30092-5408: Radius Analysis Area Group: Radius 5.0 mile(s)
----------------------------	---	---	---

Less than 9th grade	656	9.31%	5,519	11.13%	17,420	11.15%
Some High School, no diploma	282	4.00%	3,874	7.81%	10,789	6.91%
High School Graduate (or GED)	1,457	20.68%	10,306	20.78%	30,463	19.50%
Some College, no degree	1,798	25.52%	7,882	15.89%	25,132	16.08%
Associate Degree	635	9.01%	3,364	6.78%	10,041	6.43%
Bachelor's Degree	1,495	21.22%	11,611	23.41%	38,527	24.66%
Master's Degree	579	8.22%	5,001	10.08%	17,233	11.03%
Professional School Degree	66	0.94%	1,247	2.52%	3,822	2.45%
Doctorate Degree	77	1.09%	789	1.59%	2,818	1.80%

2017 Est. Pop Age 25+ by Edu. Attain., Hisp./Lat.	2,209		14,266		41,899	
No High School Diploma	1,058	47.91%	7,436	52.12%	21,838	52.12%
High School Graduate	355	16.09%	3,340	23.41%	10,976	26.20%
Some College or Associate's Degree	461	20.88%	1,957	13.72%	5,188	12.38%
Bachelor's Degree or Higher	334	15.11%	1,533	10.75%	3,896	9.30%

2017 Est. Households by Household Type	4,607		27,827		87,113	
Family Households	2,407	52.23%	18,365	66.00%	57,519	66.03%
Nonfamily Households	2,201	47.77%	9,462	34.00%	29,595	33.97%

2017 Est. Group Quarters Population	0		7		123	
-------------------------------------	---	--	---	--	-----	--

2017 HHs by Ethnicity, Hispanic/Latino	1,126		6,582		18,754	
--	-------	--	-------	--	--------	--

2017 Est. Households by HH Income	4,607		27,827		87,113	
-----------------------------------	-------	--	--------	--	--------	--

## Pop-Facts Demographics

Description	7000 JIMMY CARTER BLVD, PEACHTREE CORNERS, GA, 30092-5408: Radius Analysis Area Group: Radius 1.0 mile(s)		7000 JIMMY CARTER BLVD, PEACHTREE CORNERS, GA, 30092-5408: Radius Analysis Area Group: Radius 3.0 mile(s)		7000 JIMMY CARTER BLVD, PEACHTREE CORNERS, GA, 30092-5408: Radius Analysis Area Group: Radius 5.0 mile(s)	
	Total	%	Total	%	Total	%
Income < \$15,000	426	9.25%	2,601	9.35%	8,233	9.45%
Income \$15,000 - \$24,999	673	14.60%	3,325	11.95%	8,499	9.76%
Income \$25,000 - \$34,999	564	12.24%	3,540	12.72%	10,578	12.14%
Income \$35,000 - \$49,999	812	17.63%	4,240	15.24%	12,422	14.26%
Income \$50,000 - \$74,999	1,092	23.71%	4,549	16.35%	14,651	16.82%
Income \$75,000 - \$99,999	547	11.87%	2,531	9.09%	8,636	9.91%
Income \$100,000 - \$124,999	211	4.58%	1,779	6.39%	6,230	7.15%
Income \$125,000 - \$149,999	125	2.71%	1,263	4.54%	4,346	4.99%
Income \$150,000 - \$199,999	101	2.19%	1,667	5.99%	5,474	6.28%
Income \$200,000 - \$249,999	28	0.61%	731	2.63%	2,550	2.93%
Income \$250,000 - \$499,999	24	0.51%	984	3.54%	3,467	3.98%
Income \$500,000+	5	0.10%	618	2.22%	2,028	2.33%



■ 7000 JIMMY CARTER BLVD, PEACHTREE CORNERS, GA, 30092-5408: Radius Analysis Area Group: Radius 1.0 mile(s)
■ 7000 JIMMY CARTER BLVD, PEACHTREE CORNERS, GA, 30092-5408: Radius Analysis Area Group: Radius 3.0 mile(s)
■ 7000 JIMMY CARTER BLVD, PEACHTREE CORNERS, GA, 30092-5408: Radius Analysis Area Group: Radius 5.0 mile(s)

<b>2017 Est. Average Household Income</b>	<b>\$56,276</b>	<b>\$86,001</b>	<b>\$90,699</b>
<b>2017 Est. Median Household Income</b>	<b>\$46,838</b>	<b>\$51,137</b>	<b>\$56,526</b>

2017 Median HH Inc. by Single-Class. Race or Eth.			
White Alone	\$58,220	\$71,262	\$75,874
Black or African American Alone	\$40,169	\$39,043	\$41,657
American Indian and Alaska Native Alone	\$59,756	\$56,685	\$45,983
Asian Alone	\$69,165	\$60,358	\$61,643
Native Hawaiian and Other Pacific Islander Alone	\$62,383	\$52,775	\$62,721
Some Other Race Alone	\$43,633	\$29,555	\$33,069
Two or More Races	\$44,390	\$45,678	\$46,463
Hispanic or Latino	\$40,358	\$33,838	\$34,832
Not Hispanic or Latino	\$48,744	\$61,438	\$66,411



## Pop-Facts Demographics

Description	7000 JIMMY CARTER BLVD, PEACHTREE CORNERS, GA, 30092-5408: Radius Analysis Area Group: Radius 1.0 mile(s)		7000 JIMMY CARTER BLVD, PEACHTREE CORNERS, GA, 30092-5408: Radius Analysis Area Group: Radius 3.0 mile(s)		7000 JIMMY CARTER BLVD, PEACHTREE CORNERS, GA, 30092-5408: Radius Analysis Area Group: Radius 5.0 mile(s)	
	Total	%	Total	%	Total	%

2017 Est. Family HH Type by Presence of Own Child.	2,407		18,365		57,519	
Married-Couple Family, own children	671	27.87%	6,475	35.26%	20,595	35.81%
Married-Couple Family, no own children	494	20.52%	6,099	33.21%	19,958	34.70%
Male Householder, own children	191	7.92%	879	4.79%	2,552	4.44%
Male Householder, no own children	206	8.56%	1,096	5.97%	3,186	5.54%
Female Householder, own children	614	25.53%	2,486	13.54%	7,073	12.30%
Female Householder, no own children	231	9.60%	1,330	7.24%	4,155	7.22%

2017 Est. Households by Household Size	4,607		27,827		87,113	
1-person	1,737	37.70%	7,263	26.10%	22,745	26.11%
2-person	1,169	25.37%	7,890	28.35%	25,256	28.99%
3-person	706	15.33%	4,641	16.68%	14,143	16.23%
4-person	483	10.49%	3,991	14.34%	12,465	14.31%
5-person	277	6.02%	2,077	7.46%	6,505	7.47%
6-person	141	3.05%	1,026	3.69%	3,091	3.55%
7-or-more-person	94	2.04%	939	3.37%	2,909	3.34%
<b>2017 Est. Average Household Size</b>	<b>2.40</b>		<b>2.77</b>		<b>2.76</b>	

2017 Est. Households by Presence of People Under 18	4,607		27,827		87,113	
<b>Households with 1 or More People under Age 18:</b>	<b>1,637</b>	<b>35.53%</b>	<b>10,830</b>	<b>38.92%</b>	<b>33,176</b>	<b>38.08%</b>
Married-Couple Family	697	42.59%	6,791	62.70%	21,526	64.88%
Other Family, Male Householder	236	14.43%	1,112	10.27%	3,220	9.70%
Other Family, Female Householder	672	41.05%	2,788	25.75%	7,986	24.07%
Nonfamily, Male Householder	28	1.72%	108	1.00%	338	1.02%
Nonfamily, Female Householder	3	0.21%	31	0.29%	107	0.32%

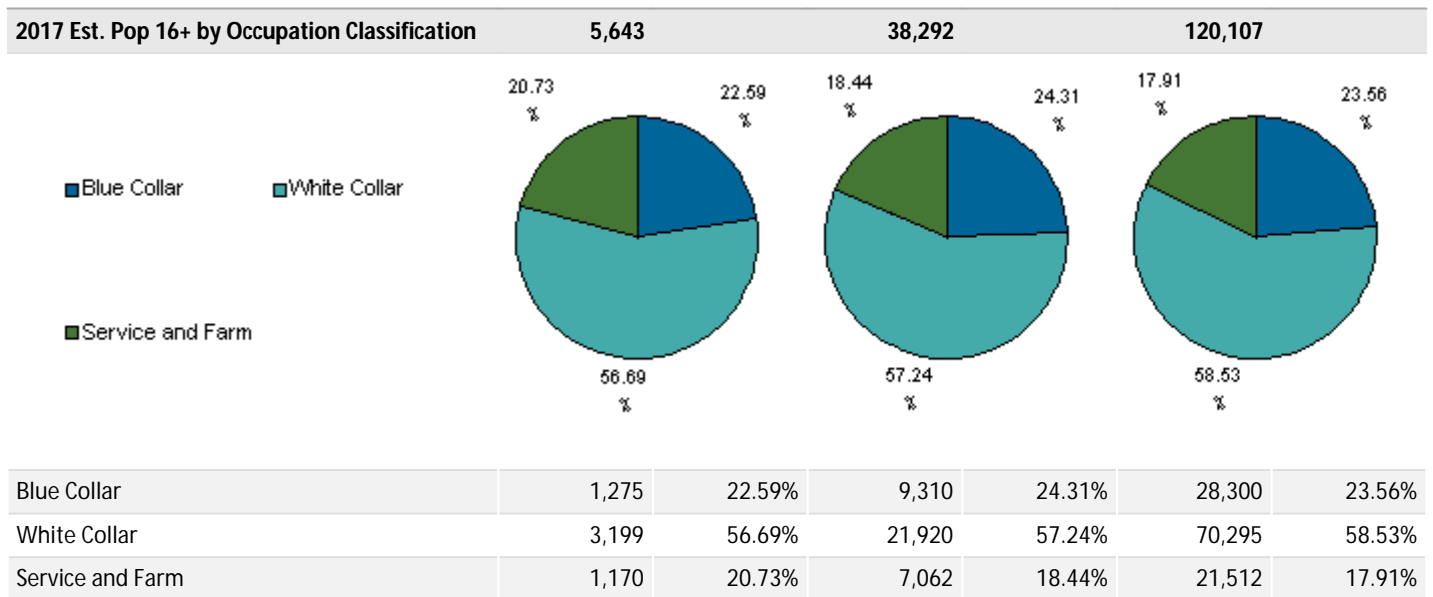
Households with No People under Age 18:	2,971	64.47%	16,997	61.08%	53,937	61.92%
Married-Couple Family	468	15.74%	5,791	34.07%	19,040	35.30%
Other Family, Male Householder	162	5.47%	866	5.09%	2,521	4.67%
Other Family, Female Householder	171	5.77%	1,024	6.02%	3,232	5.99%
Nonfamily, Male Householder	1,120	37.70%	4,786	28.16%	14,438	26.77%
Nonfamily, Female Householder	1,049	35.33%	4,530	26.65%	14,706	27.27%

## Pop-Facts Demographics

Description	7000 JIMMY CARTER BLVD, PEACHTREE CORNERS, GA, 30092-5408: Radius Analysis Area Group: Radius 1.0 mile(s)		7000 JIMMY CARTER BLVD, PEACHTREE CORNERS, GA, 30092-5408: Radius Analysis Area Group: Radius 3.0 mile(s)		7000 JIMMY CARTER BLVD, PEACHTREE CORNERS, GA, 30092-5408: Radius Analysis Area Group: Radius 5.0 mile(s)	
	Total	%	Total	%	Total	%
<b>2017 Est. Households by Number of Vehicles</b>	<b>4,607</b>		<b>27,827</b>		<b>87,113</b>	
No Vehicles	343	7.44%	1,425	5.12%	5,157	5.92%
1 Vehicle	2,613	56.72%	11,519	41.40%	33,431	38.38%
2 Vehicles	1,327	28.80%	10,644	38.25%	35,014	40.19%
3 Vehicles	276	5.98%	3,148	11.31%	9,936	11.41%
4 Vehicles	10	0.22%	768	2.76%	2,672	3.07%
5 or more Vehicles	39	0.84%	322	1.16%	904	1.04%
<b>2017 Est. Average Number of Vehicles</b>	<b>1.4</b>		<b>1.7</b>		<b>1.7</b>	
<b>2017 Est. Families by Poverty Status</b>	<b>2,407</b>		<b>18,365</b>		<b>57,519</b>	
2017 Families at or Above Poverty	1,969	81.82%	15,227	82.92%	48,643	84.57%
2017 Families at or Above Poverty with Children	1,201	49.92%	7,609	41.43%	24,615	42.79%
2017 Families Below Poverty	437	18.18%	3,137	17.08%	8,876	15.43%
2017 Families Below Poverty with Children	394	16.36%	2,704	14.73%	7,513	13.06%
<b>2017 Est. Pop Age 16+ by Employment Status</b>	<b>8,201</b>		<b>57,844</b>		<b>182,418</b>	
In Armed Forces	12	0.15%	122	0.21%	220	0.12%
Civilian - Employed	5,643	68.80%	38,324	66.25%	120,485	66.05%
Civilian - Unemployed	519	6.32%	3,205	5.54%	9,674	5.30%
Not in Labor Force	2,028	24.72%	16,193	27.99%	52,039	28.53%
<b>2017 Est. Civ. Employed Pop 16+ by Class of Worker</b>	<b>5,643</b>		<b>38,292</b>		<b>120,107</b>	
For-Profit Private Workers	4,840	85.76%	30,876	80.63%	92,954	77.39%
Non-Profit Private Workers	122	2.17%	1,407	3.67%	6,016	5.01%
Local Government Workers	182	3.23%	1,184	3.09%	3,686	3.07%
State Government Workers	142	2.52%	654	1.71%	2,276	1.89%
Federal Government Workers	79	1.39%	554	1.45%	1,868	1.56%
Self-Employed Workers	261	4.63%	3,467	9.05%	12,982	10.81%
Unpaid Family Workers	17	0.30%	151	0.39%	326	0.27%
<b>2017 Est. Civ. Employed Pop 16+ by Occupation</b>	<b>5,643</b>		<b>38,292</b>		<b>120,107</b>	
Architect/Engineer	98	1.74%	515	1.34%	1,693	1.41%
Arts/Entertainment/Sports	102	1.82%	625	1.63%	2,357	1.96%
Building Grounds Maintenance	425	7.54%	2,803	7.32%	7,832	6.52%
Business/Financial Operations	321	5.69%	2,078	5.43%	6,982	5.81%

## Pop-Facts Demographics

Description	7000 JIMMY CARTER BLVD, PEACHTREE CORNERS, GA, 30092-5408: Radius Analysis Area Group: Radius 1.0 mile(s)		7000 JIMMY CARTER BLVD, PEACHTREE CORNERS, GA, 30092-5408: Radius Analysis Area Group: Radius 3.0 mile(s)		7000 JIMMY CARTER BLVD, PEACHTREE CORNERS, GA, 30092-5408: Radius Analysis Area Group: Radius 5.0 mile(s)	
	Total	%	Total	%	Total	%
Community/Social Services	44	0.78%	400	1.04%	1,172	0.98%
Computer/Mathematical	221	3.92%	1,456	3.80%	5,275	4.39%
Construction/Extraction	713	12.64%	4,620	12.07%	13,996	11.65%
Education/Training/Library	225	3.99%	1,765	4.61%	5,692	4.74%
Farming/Fishing/Forestry	1	0.02%	123	0.32%	243	0.20%
Food Prep/Serving	424	7.52%	2,342	6.12%	7,350	6.12%
Health Practitioner/Technician	163	2.89%	1,495	3.90%	4,810	4.00%
Healthcare Support	123	2.18%	485	1.27%	1,460	1.22%
Maintenance Repair	130	2.31%	962	2.51%	2,831	2.36%
Legal	47	0.84%	663	1.73%	1,622	1.35%
Life/Physical/Social Science	10	0.18%	277	0.72%	1,035	0.86%
Management	454	8.05%	4,031	10.53%	13,331	11.10%
Office/Admin. Support	862	15.28%	4,075	10.64%	12,583	10.48%
Production	120	2.13%	1,628	4.25%	5,363	4.47%
Protective Services	90	1.60%	400	1.04%	1,039	0.87%
Sales/Related	650	11.52%	4,542	11.86%	13,743	11.44%
Personal Care/Service	106	1.88%	909	2.37%	3,588	2.99%
Transportation/Moving	311	5.51%	2,100	5.48%	6,111	5.09%



2017 Est. Workers Age 16+ by Transp. to Work	5,404	36,950	116,584			
Drove Alone	3,966	73.39%	26,880	72.75%	82,877	71.09%

## Pop-Facts Demographics

Description	7000 JIMMY CARTER BLVD, PEACHTREE CORNERS, GA, 30092-5408: Radius Analysis Area Group: Radius 1.0 mile(s)		7000 JIMMY CARTER BLVD, PEACHTREE CORNERS, GA, 30092-5408: Radius Analysis Area Group: Radius 3.0 mile(s)		7000 JIMMY CARTER BLVD, PEACHTREE CORNERS, GA, 30092-5408: Radius Analysis Area Group: Radius 5.0 mile(s)	
	Total	%	Total	%	Total	%
Car Pooled	784	14.51%	5,624	15.22%	18,078	15.51%
Public Transportation	137	2.53%	1,136	3.08%	4,237	3.63%
Walked	142	2.63%	657	1.78%	2,293	1.97%
Bicycle	13	0.23%	72	0.20%	104	0.09%
Other Means	180	3.32%	633	1.71%	1,954	1.68%
Worked at Home	183	3.39%	1,946	5.27%	7,041	6.04%

### 2017 Est. Workers Age 16+ by Travel Time to Work

Less than 15 Minutes	1,325		6,578		19,839	
15 - 29 Minutes	1,697		12,132		39,762	
30 - 44 Minutes	1,236		10,016		30,966	
45 - 59 Minutes	365		3,054		9,533	
60 or more Minutes	593		3,202		9,577	
<b>2017 Est. Avg Travel Time to Work in Minutes</b>	<b>30.00</b>		<b>31.00</b>		<b>31.00</b>	

2017 Est. Occupied Housing Units by Tenure	4,607		27,827		87,113	
Owner Occupied	922	20.02%	13,633	48.99%	46,436	53.31%
Renter Occupied	3,685	79.98%	14,194	51.01%	40,677	46.69%

<b>2017 Owner Occ. HUs: Avg. Length of Residence</b>	<b>13.2</b>		<b>14.6</b>		<b>15.0</b>	
--	-------------	--	-------------	--	-------------	--

<b>2017 Renter Occ. HUs: Avg. Length of Residence</b>	<b>5.2</b>		<b>5.5</b>		<b>5.5</b>	
---	------------	--	------------	--	------------	--

2017 Est. Owner-Occupied Housing Units by Value	922		13,633		46,436	
Value Less than \$20,000	29	3.12%	201	1.47%	1,082	2.33%
Value \$20,000 - \$39,999	48	5.19%	149	1.09%	507	1.09%
Value \$40,000 - \$59,999	69	7.52%	239	1.75%	730	1.57%
Value \$60,000 - \$79,999	132	14.34%	510	3.74%	1,248	2.69%
Value \$80,000 - \$99,999	113	12.26%	713	5.23%	2,037	4.39%
Value \$100,000 - \$149,999	156	16.86%	1,622	11.89%	5,611	12.08%
Value \$150,000 - \$199,999	80	8.63%	1,219	8.94%	4,672	10.06%
Value \$200,000 - \$299,999	168	18.21%	3,026	22.20%	9,305	20.04%
Value \$300,000 - \$399,999	70	7.54%	2,290	16.80%	7,349	15.83%

## Pop-Facts Demographics

Description	7000 JIMMY CARTER BLVD, PEACHTREE CORNERS, GA, 30092-5408: Radius Analysis Area Group: Radius 1.0 mile(s)		7000 JIMMY CARTER BLVD, PEACHTREE CORNERS, GA, 30092-5408: Radius Analysis Area Group: Radius 3.0 mile(s)		7000 JIMMY CARTER BLVD, PEACHTREE CORNERS, GA, 30092-5408: Radius Analysis Area Group: Radius 5.0 mile(s)	
	Total	%	Total	%	Total	%
Value \$400,000 - \$499,999	34	3.66%	1,543	11.31%	5,716	12.31%
Value \$500,000 - \$749,999	21	2.26%	1,451	10.65%	5,339	11.50%
Value \$750,000 - \$999,999	3	0.33%	362	2.66%	1,801	3.88%
Value \$1,000,000 or more	1	0.08%	309	2.26%	1,040	2.24%
<b>2017 Est. Median All Owner-Occupied Housing Value</b>	<b>\$122,437</b>		<b>\$271,511</b>		<b>\$278,790</b>	

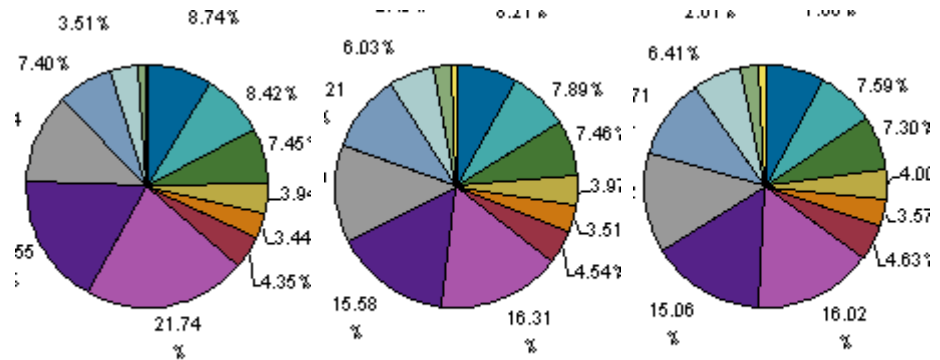
2017 Est. Housing Units by Units in Structure	5,449		31,222		96,326	
1 Unit Attached	831	15.26%	3,205	10.26%	8,330	8.65%
1 Unit Detached	257	4.71%	13,298	42.59%	45,965	47.72%
2 Units	78	1.43%	283	0.91%	1,135	1.18%
3 or 4 Units	728	13.35%	1,199	3.84%	4,512	4.68%
5 to 19 Units	3,124	57.34%	10,462	33.51%	25,445	26.42%
20 to 49 Units	351	6.43%	2,208	7.07%	6,347	6.59%
50 or More Units	73	1.33%	417	1.33%	3,693	3.83%
Mobile Home or Trailer	8	0.14%	150	0.48%	853	0.89%
Boat, RV, Van, etc.	0	0.00%	0	0.00%	45	0.05%

2017 Est. Housing Units by Year Structure Built	5,449		31,222		96,326	
Housing Units Built 2010 or later	473	8.68%	2,628	8.42%	7,396	7.68%
Housing Units Built 2000 to 2009	457	8.39%	3,852	12.34%	11,532	11.97%
Housing Units Built 1990 to 1999	1,166	21.40%	5,923	18.97%	19,317	20.05%
Housing Units Built 1980 to 1989	1,976	36.26%	9,345	29.93%	28,157	29.23%
Housing Units Built 1970 to 1979	1,093	20.06%	5,844	18.72%	16,766	17.41%
Housing Units Built 1960 to 1969	108	1.98%	2,337	7.49%	9,412	9.77%
Housing Units Built 1950 to 1959	168	3.08%	938	3.01%	2,923	3.03%
Housing Units Built 1940 to 1949	1	0.03%	192	0.62%	454	0.47%
Housing Unit Built 1939 or Earlier	7	0.13%	163	0.52%	369	0.38%
<b>2017 Est. Median Year Structure Built</b>	<b>1987</b>		<b>1987</b>		<b>1986</b>	

# Pop-Facts Demographics

Description	7000 JIMMY CARTER BLVD, PEACHTREE CORNERS, GA, 30092-5408: Radius Analysis Area Group: Radius 1.0 mile(s)		7000 JIMMY CARTER BLVD, PEACHTREE CORNERS, GA, 30092-5408: Radius Analysis Area Group: Radius 3.0 mile(s)		7000 JIMMY CARTER BLVD, PEACHTREE CORNERS, GA, 30092-5408: Radius Analysis Area Group: Radius 5.0 mile(s)	
	Total	%	Total	%	Total	%
<b>Pop-Facts Population Quick Facts</b>						
<b>2017 Est. Population by Age</b>	<b>11,068</b>		<b>76,979</b>		<b>240,247</b>	

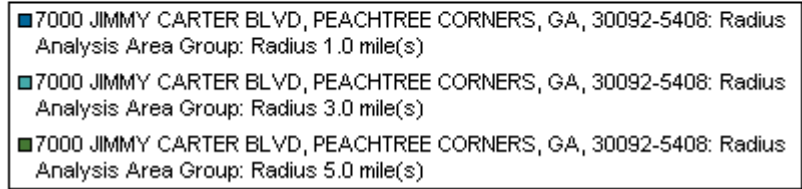
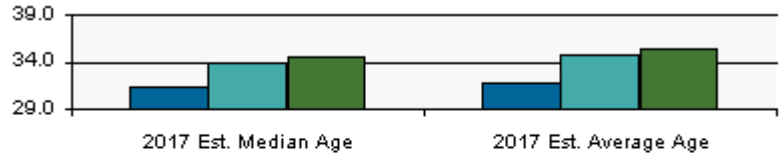
- Age 0 - 4
- Age 5 - 9
- Age 10 - 14
- Age 15 - 17
- Age 18 - 20
- Age 21 - 24
- Age 25 - 34
- Age 35 - 44
- Age 45 - 54
- Age 55 - 64
- Age 65 - 74
- Age 75 - 84
- Age 85 and over



Age 0 - 4	968	8.74%	6,317	8.21%	18,883	7.86%
Age 5 - 9	931	8.42%	6,076	7.89%	18,247	7.59%
Age 10 - 14	825	7.45%	5,739	7.46%	17,544	7.30%
Age 15 - 17	437	3.94%	3,053	3.97%	9,620	4.00%
Age 18 - 20	381	3.44%	2,705	3.51%	8,576	3.57%
Age 21 - 24	482	4.35%	3,496	4.54%	11,132	4.63%
Age 25 - 34	2,406	21.74%	12,552	16.31%	38,483	16.02%
Age 35 - 44	1,942	17.55%	11,995	15.58%	36,184	15.06%
Age 45 - 54	1,344	12.14%	10,150	13.19%	32,241	13.42%
Age 55 - 64	819	7.40%	7,860	10.21%	25,735	10.71%
Age 65 - 74	389	3.51%	4,640	6.03%	15,410	6.41%
Age 75 - 84	119	1.07%	1,846	2.40%	6,264	2.61%
Age 85 and over	27	0.25%	551	0.72%	1,929	0.80%
Age 16 and over	8,201	74.10%	57,844	75.14%	182,418	75.93%
Age 18 and over	7,908	71.45%	55,794	72.48%	175,953	73.24%
Age 21 and over	7,527	68.01%	53,090	68.97%	167,378	69.67%
Age 65 and over	535	4.83%	7,037	9.14%	23,603	9.82%

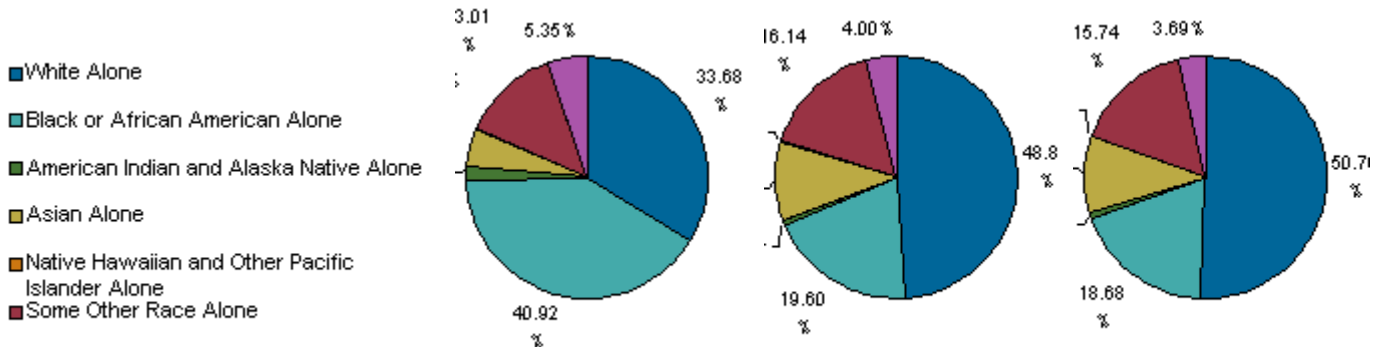
# Pop-Facts Demographics

Description	7000 JIMMY CARTER BLVD, PEACHTREE CORNERS, GA, 30092-5408: Radius Analysis Area Group: Radius 1.0 mile(s)		7000 JIMMY CARTER BLVD, PEACHTREE CORNERS, GA, 30092-5408: Radius Analysis Area Group: Radius 3.0 mile(s)		7000 JIMMY CARTER BLVD, PEACHTREE CORNERS, GA, 30092-5408: Radius Analysis Area Group: Radius 5.0 mile(s)	
	Total	%	Total	%	Total	%



2017 Est. Median Age	31.3	33.8	34.4
2017 Est. Average Age	31.6	34.7	35.3

2017 Est. Population by Single-Classification Race	11,068	76,979	240,247
--	--------	--------	---------



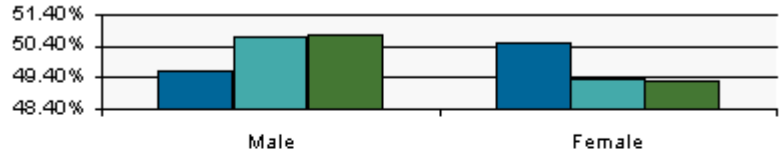
White Alone	3,728	33.68%	37,577	48.81%	121,937	50.76%
Black or African American Alone	4,529	40.92%	15,088	19.60%	44,886	18.68%
American Indian and Alaska Native Alone	212	1.92%	638	0.83%	1,918	0.80%
Asian Alone	557	5.03%	8,080	10.50%	24,618	10.25%
Native Hawaiian and Other Pacific Islander Alone	10	0.09%	97	0.13%	221	0.09%
Some Other Race Alone	1,440	13.01%	12,423	16.14%	37,813	15.74%
Two or More Races	592	5.35%	3,076	4.00%	8,854	3.69%

2017 Est. Population by Ethnicity (Hispanic or Latino)	11,068	76,979	240,247			
Hispanic or Latino	4,050	36.59%	26,300	34.16%	77,494	32.26%

## Pop-Facts Demographics

Description	7000 JIMMY CARTER BLVD, PEACHTREE CORNERS, GA, 30092-5408: Radius Analysis Area Group: Radius 1.0 mile(s)		7000 JIMMY CARTER BLVD, PEACHTREE CORNERS, GA, 30092-5408: Radius Analysis Area Group: Radius 3.0 mile(s)		7000 JIMMY CARTER BLVD, PEACHTREE CORNERS, GA, 30092-5408: Radius Analysis Area Group: Radius 5.0 mile(s)	
	Total	%	Total	%	Total	%
Not Hispanic or Latino	7,018	63.41%	50,679	65.84%	162,753	67.74%

2017 Est. Population by Sex	11,068	76,979	240,247
-----------------------------	--------	--------	---------



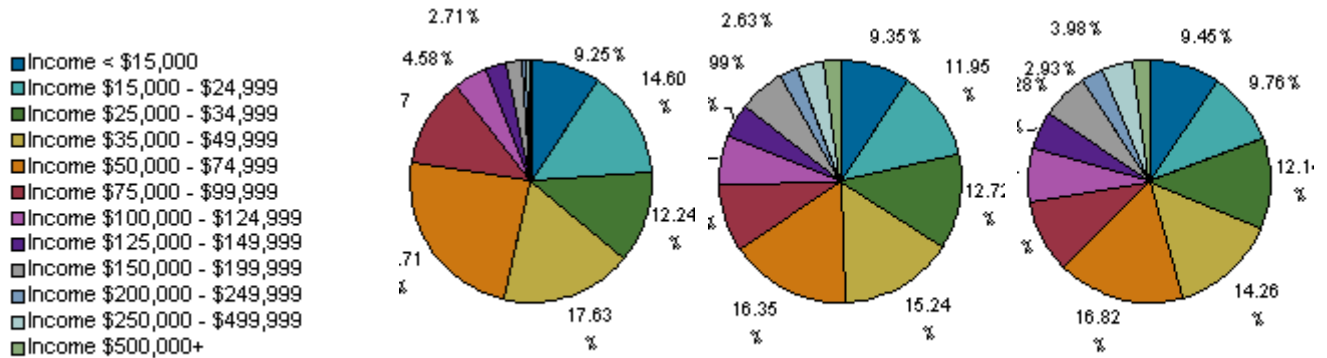
■ 7000 JIMMY CARTER BLVD, PEACHTREE CORNERS, GA, 30092-5408: Radius Analysis Area Group: Radius 1.0 mile(s)
■ 7000 JIMMY CARTER BLVD, PEACHTREE CORNERS, GA, 30092-5408: Radius Analysis Area Group: Radius 3.0 mile(s)
■ 7000 JIMMY CARTER BLVD, PEACHTREE CORNERS, GA, 30092-5408: Radius Analysis Area Group: Radius 5.0 mile(s)

Male	5,485	49.56%	39,012	50.68%	121,826	50.71%
Female	5,583	50.44%	37,967	49.32%	118,421	49.29%



# Pop-Facts Demographics

Description	7000 JIMMY CARTER BLVD, PEACHTREE CORNERS, GA, 30092-5408: Radius Analysis Area Group: Radius 1.0 mile(s)		7000 JIMMY CARTER BLVD, PEACHTREE CORNERS, GA, 30092-5408: Radius Analysis Area Group: Radius 3.0 mile(s)		7000 JIMMY CARTER BLVD, PEACHTREE CORNERS, GA, 30092-5408: Radius Analysis Area Group: Radius 5.0 mile(s)	
	Total	%	Total	%	Total	%
<b>Pop-Facts Household Quick Facts</b>						
<b>2017 Est. Households by Household Income</b>	<b>4,607</b>		<b>27,827</b>		<b>87,113</b>	



Income	Radius 1.0	Radius 1.0 %	Radius 3.0	Radius 3.0 %	Radius 5.0	Radius 5.0 %
Income < \$15,000	426	9.25%	2,601	9.35%	8,233	9.45%
Income \$15,000 - \$24,999	673	14.60%	3,325	11.95%	8,499	9.76%
Income \$25,000 - \$34,999	564	12.24%	3,540	12.72%	10,578	12.14%
Income \$35,000 - \$49,999	812	17.63%	4,240	15.24%	12,422	14.26%
Income \$50,000 - \$74,999	1,092	23.71%	4,549	16.35%	14,651	16.82%
Income \$75,000 - \$99,999	547	11.87%	2,531	9.09%	8,636	9.91%
Income \$100,000 - \$124,999	211	4.58%	1,779	6.39%	6,230	7.15%
Income \$125,000 - \$149,999	125	2.71%	1,263	4.54%	4,346	4.99%
Income \$150,000 - \$199,999	101	2.19%	1,667	5.99%	5,474	6.28%
Income \$200,000 - \$249,999	28	0.61%	731	2.63%	2,550	2.93%
Income \$250,000 - \$499,999	24	0.51%	984	3.54%	3,467	3.98%
Income \$500,000+	5	0.10%	618	2.22%	2,028	2.33%



7000 JIMMY CARTER BLVD, PEACHTREE CORNERS, GA, 30092-5408: Radius Analysis Area Group: Radius 1.0 mile(s)
7000 JIMMY CARTER BLVD, PEACHTREE CORNERS, GA, 30092-5408: Radius Analysis Area Group: Radius 3.0 mile(s)
7000 JIMMY CARTER BLVD, PEACHTREE CORNERS, GA, 30092-5408: Radius Analysis Area Group: Radius 5.0 mile(s)

2017 Est. Average Household Income	\$56,276	\$86,001	\$90,699
2017 Est. Median Household Income	\$46,838	\$51,137	\$56,526

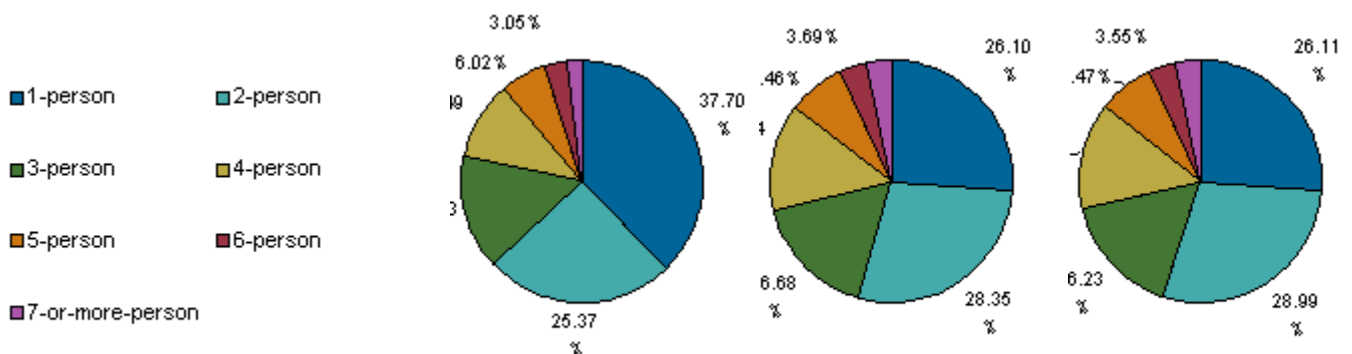
## Pop-Facts Demographics

Description	7000 JIMMY CARTER BLVD, PEACHTREE CORNERS, GA, 30092-5408: Radius Analysis Area Group: Radius 1.0 mile(s)		7000 JIMMY CARTER BLVD, PEACHTREE CORNERS, GA, 30092-5408: Radius Analysis Area Group: Radius 3.0 mile(s)		7000 JIMMY CARTER BLVD, PEACHTREE CORNERS, GA, 30092-5408: Radius Analysis Area Group: Radius 5.0 mile(s)	
	Total	%	Total	%	Total	%

2017 Median HH Inc. by Single-Classification Race						
White Alone	\$58,220		\$71,262		\$75,874	
Black or African American Alone	\$40,169		\$39,043		\$41,657	
American Indian and Alaska Native Alone	\$59,756		\$56,685		\$45,983	
Asian Alone	\$69,165		\$60,358		\$61,643	
Native Hawaiian and Other Pacific Islander Alone	\$62,383		\$52,775		\$62,721	
Some Other Race Alone	\$43,633		\$29,555		\$33,069	
Two or More Races	\$44,390		\$45,678		\$46,463	
Hispanic or Latino	\$40,358		\$33,838		\$34,832	
Not Hispanic or Latino	\$48,744		\$61,438		\$66,411	

2017 Est. Households by Household Type	4,607		27,827		87,113	
Family Households	2,407	52.23%	18,365	66.00%	57,519	66.03%
Nonfamily Households	2,201	47.77%	9,462	34.00%	29,595	33.97%
<b>2017 Est. Group Quarters Population</b>	<b>0</b>		<b>7</b>		<b>123</b>	

2017 Est. Households by Household Size	4,607		27,827		87,113	
--	-------	--	--------	--	--------	--



1-person	1,737	37.70%	7,263	26.10%	22,745	26.11%
2-person	1,169	25.37%	7,890	28.35%	25,256	28.99%
3-person	706	15.33%	4,641	16.68%	14,143	16.23%
4-person	483	10.49%	3,991	14.34%	12,465	14.31%
5-person	277	6.02%	2,077	7.46%	6,505	7.47%
6-person	141	3.05%	1,026	3.69%	3,091	3.55%
7-or-more-person	94	2.04%	939	3.37%	2,909	3.34%

## Pop-Facts Demographics

Description	7000 JIMMY CARTER BLVD, PEACHTREE CORNERS, GA, 30092-5408: Radius Analysis Area Group: Radius 1.0 mile(s)		7000 JIMMY CARTER BLVD, PEACHTREE CORNERS, GA, 30092-5408: Radius Analysis Area Group: Radius 3.0 mile(s)		7000 JIMMY CARTER BLVD, PEACHTREE CORNERS, GA, 30092-5408: Radius Analysis Area Group: Radius 5.0 mile(s)	
	Total	%	Total	%	Total	%
2017 Est. Average Household Size	2.40		2.77		2.76	
<b>2017 Est. HHs by Type by Presence of Own Children</b>	<b>2,407</b>		<b>18,365</b>		<b>57,519</b>	
Married-Couple Family, own children	671	27.87%	6,475	35.26%	20,595	35.81%
Married-Couple Family, no own children	494	20.52%	6,099	33.21%	19,958	34.70%
Male Householder, own children	191	7.92%	879	4.79%	2,552	4.44%
Male Householder, no own children	206	8.56%	1,096	5.97%	3,186	5.54%
Female Householder, own children	614	25.53%	2,486	13.54%	7,073	12.30%
Female Householder, no own children	231	9.60%	1,330	7.24%	4,155	7.22%

## Pop-Facts Demographics

Description	7000 JIMMY CARTER BLVD, PEACHTREE CORNERS, GA, 30092-5408: Radius Analysis Area Group: Radius 1.0 mile(s)		7000 JIMMY CARTER BLVD, PEACHTREE CORNERS, GA, 30092-5408: Radius Analysis Area Group: Radius 3.0 mile(s)		7000 JIMMY CARTER BLVD, PEACHTREE CORNERS, GA, 30092-5408: Radius Analysis Area Group: Radius 5.0 mile(s)	
	Total	%	Total	%	Total	%

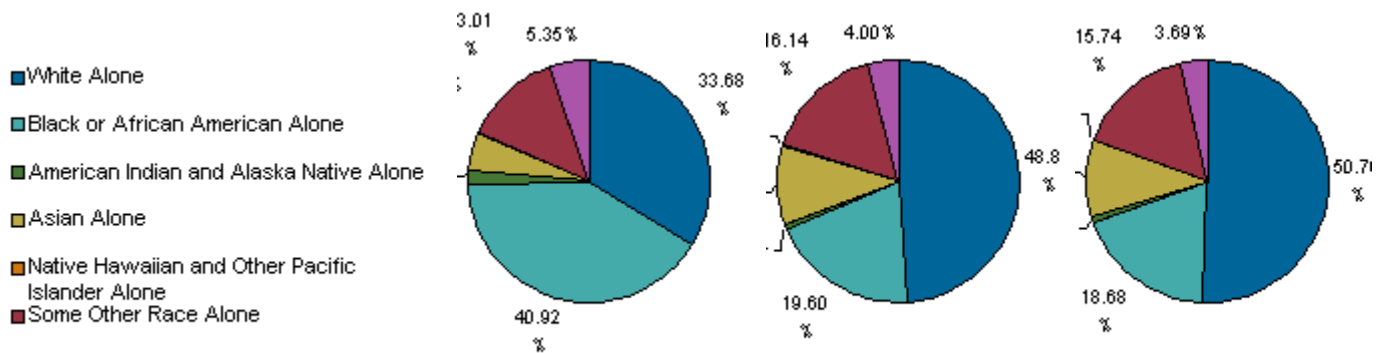
### Pop-Facts Demographic Quick Facts

#### 2017 Est. Population by Single-Classification Race

11,068

76,979

240,247



White Alone	3,728	33.68%	37,577	48.81%	121,937	50.76%
Black or African American Alone	4,529	40.92%	15,088	19.60%	44,886	18.68%
American Indian and Alaska Native Alone	212	1.92%	638	0.83%	1,918	0.80%
Asian Alone	557	5.03%	8,080	10.50%	24,618	10.25%
Native Hawaiian and Other Pacific Islander Alone	10	0.09%	97	0.13%	221	0.09%
Some Other Race Alone	1,440	13.01%	12,423	16.14%	37,813	15.74%
Two or More Races	592	5.35%	3,076	4.00%	8,854	3.69%

#### 2017 Est. Population by Ethnicity (Hispanic or Latino)

11,068

76,979

240,247

Hispanic or Latino	4,050	36.59%	26,300	34.16%	77,494	32.26%
Not Hispanic or Latino	7,018	63.41%	50,679	65.84%	162,753	67.74%

#### 2017 Occupied Housing Units by Tenure

4,607

27,827

87,113

Owner-Occupied	922	20.02%	13,633	48.99%	46,436	53.31%
Renter-Occupied	3,685	79.98%	14,194	51.01%	40,677	46.69%

#### 2017 Average Household Size

2.40

2.77

2.76

#### 2017 Est. Households by Household Income

4,607

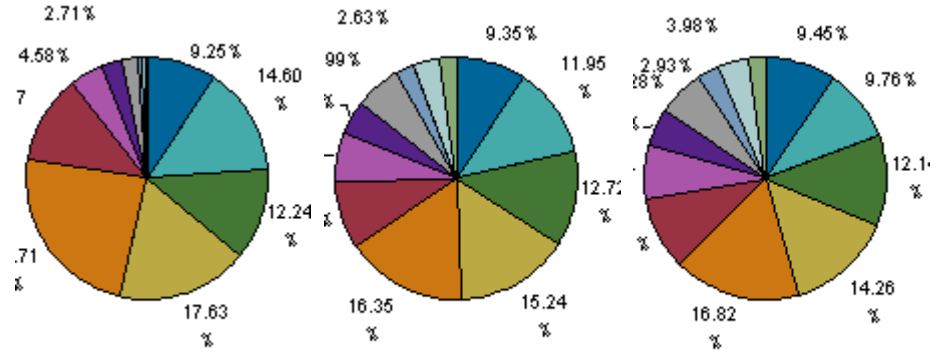
27,827

87,113

# Pop-Facts Demographics

Description	7000 JIMMY CARTER BLVD, PEACHTREE CORNERS, GA, 30092-5408: Radius Analysis Area Group: Radius 1.0 mile(s)		7000 JIMMY CARTER BLVD, PEACHTREE CORNERS, GA, 30092-5408: Radius Analysis Area Group: Radius 3.0 mile(s)		7000 JIMMY CARTER BLVD, PEACHTREE CORNERS, GA, 30092-5408: Radius Analysis Area Group: Radius 5.0 mile(s)	
	Total	%	Total	%	Total	%

- Income < \$15,000
- Income \$15,000 - \$24,999
- Income \$25,000 - \$34,999
- Income \$35,000 - \$49,999
- Income \$50,000 - \$74,999
- Income \$75,000 - \$99,999
- Income \$100,000 - \$124,999
- Income \$125,000 - \$149,999
- Income \$150,000 - \$199,999
- Income \$200,000 - \$249,999
- Income \$250,000 - \$499,999
- Income \$500,000+



Income Category	Radius 1.0 (Total)	Radius 1.0 (%)	Radius 3.0 (Total)	Radius 3.0 (%)	Radius 5.0 (Total)	Radius 5.0 (%)
Income < \$15,000	426	9.25%	2,601	9.35%	8,233	9.45%
Income \$15,000 - \$24,999	673	14.60%	3,325	11.95%	8,499	9.76%
Income \$25,000 - \$34,999	564	12.24%	3,540	12.72%	10,578	12.14%
Income \$35,000 - \$49,999	812	17.63%	4,240	15.24%	12,422	14.26%
Income \$50,000 - \$74,999	1,092	23.71%	4,549	16.35%	14,651	16.82%
Income \$75,000 - \$99,999	547	11.87%	2,531	9.09%	8,636	9.91%
Income \$100,000 - \$124,999	211	4.58%	1,779	6.39%	6,230	7.15%
Income \$125,000 - \$149,999	125	2.71%	1,263	4.54%	4,346	4.99%
Income \$150,000 - \$199,999	101	2.19%	1,667	5.99%	5,474	6.28%
Income \$200,000 - \$249,999	28	0.61%	731	2.63%	2,550	2.93%
Income \$250,000 - \$499,999	24	0.51%	984	3.54%	3,467	3.98%
Income \$500,000+	5	0.10%	618	2.22%	2,028	2.33%



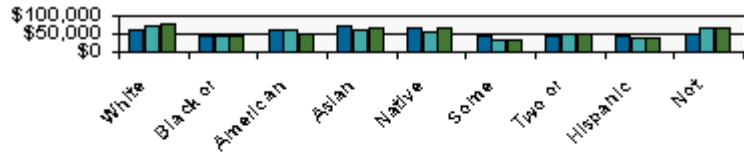
Income Type	Radius 1.0 (Total)	Radius 3.0 (Total)	Radius 5.0 (Total)
2017 Est. Average Household Income	\$56,276	\$86,001	\$90,699
2017 Est. Median Household Income	\$46,838	\$51,137	\$56,526

2017 Est. Average Household Income	\$56,276	\$86,001	\$90,699
2017 Est. Median Household Income	\$46,838	\$51,137	\$56,526

# Pop-Facts Demographics

Description	7000 JIMMY CARTER BLVD, PEACHTREE CORNERS, GA, 30092-5408: Radius Analysis Area Group: Radius 1.0 mile(s)		7000 JIMMY CARTER BLVD, PEACHTREE CORNERS, GA, 30092-5408: Radius Analysis Area Group: Radius 3.0 mile(s)		7000 JIMMY CARTER BLVD, PEACHTREE CORNERS, GA, 30092-5408: Radius Analysis Area Group: Radius 5.0 mile(s)	
	Total	%	Total	%	Total	%

## 2017 Median HH Inc. by Single-Classification Race

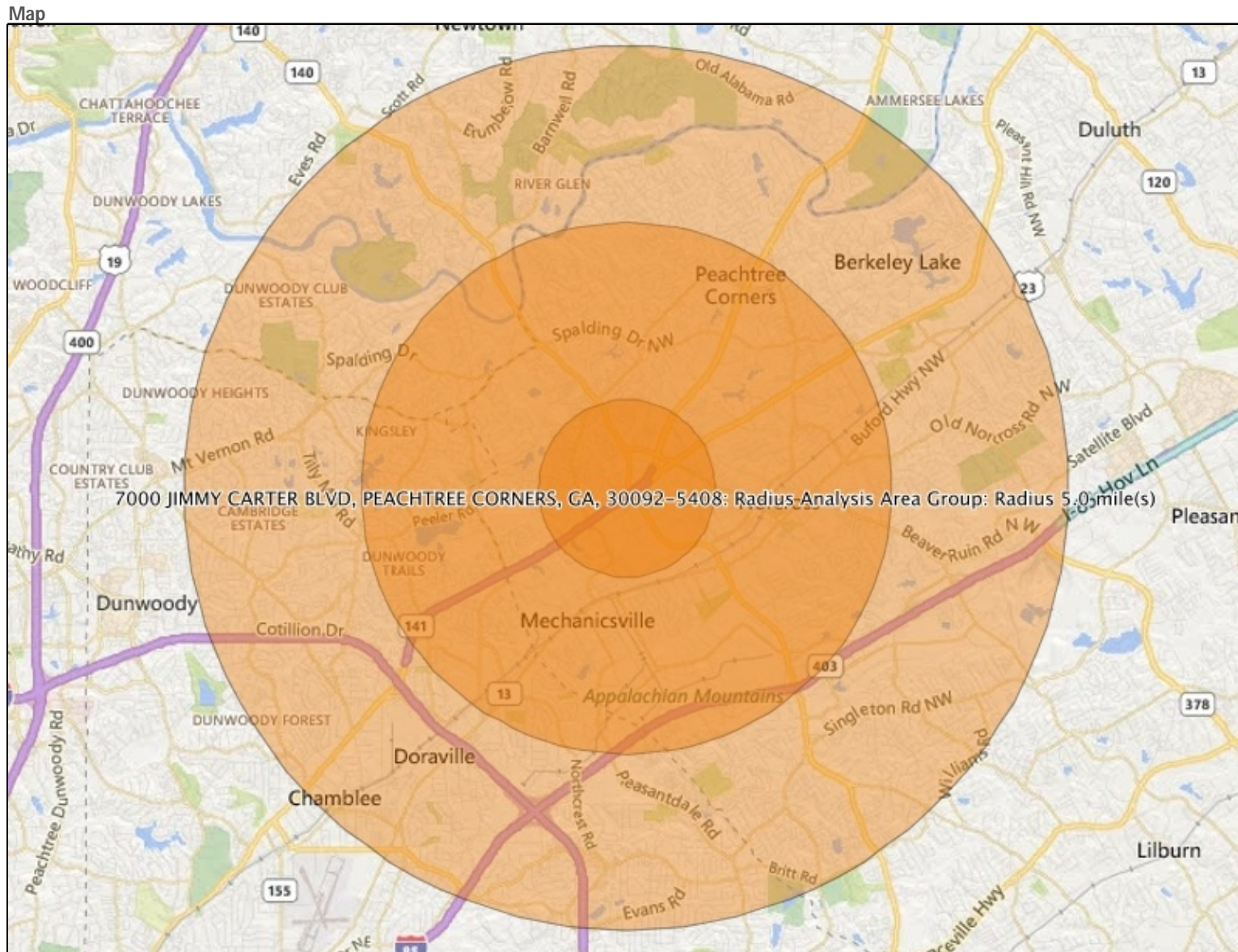


■ 7000 JIMMY CARTER BLVD, PEACHTREE CORNERS, GA, 30092-5408: Radius Analysis Area Group: Radius 1.0 mile(s)
■ 7000 JIMMY CARTER BLVD, PEACHTREE CORNERS, GA, 30092-5408: Radius Analysis Area Group: Radius 3.0 mile(s)
■ 7000 JIMMY CARTER BLVD, PEACHTREE CORNERS, GA, 30092-5408: Radius Analysis Area Group: Radius 5.0 mile(s)

Race	7000 JIMMY CARTER BLVD, PEACHTREE CORNERS, GA, 30092-5408: Radius Analysis Area Group: Radius 1.0 mile(s)	7000 JIMMY CARTER BLVD, PEACHTREE CORNERS, GA, 30092-5408: Radius Analysis Area Group: Radius 3.0 mile(s)	7000 JIMMY CARTER BLVD, PEACHTREE CORNERS, GA, 30092-5408: Radius Analysis Area Group: Radius 5.0 mile(s)
White Alone	\$58,220	\$71,262	\$75,874
Black or African American Alone	\$40,169	\$39,043	\$41,657
American Indian and Alaska Native Alone	\$59,756	\$56,685	\$45,983
Asian Alone	\$69,165	\$60,358	\$61,643
Native Hawaiian and Other Pacific Islander Alone	\$62,383	\$52,775	\$62,721
Some Other Race Alone	\$43,633	\$29,555	\$33,069
Two or More Races	\$44,390	\$45,678	\$46,463
Hispanic or Latino	\$40,358	\$33,838	\$34,832
Not Hispanic or Latino	\$48,744	\$61,438	\$66,411



# Pop-Facts Demographics



**2017 Population (2017 Population) : Index: Descending by Equal Ranges**

**List of Report Areas by Radius Analysis Area Group**

- Index (100~100)
- Index (100~100)
- Index (100~100)
- Index (100~100)
- Index (100~100)

## Pop-Facts Demographics

### Appendix - Analysis Area details.

7000 JIMMY CARTER BLVD, PEACHTREE CORNERS, GA, 30092-5408: Radius Analysis Area Group: Radius 1.0 mile(s): 33.944774 -84.241065

7000 JIMMY CARTER BLVD, PEACHTREE CORNERS, GA, 30092-5408: Radius Analysis Area Group: Radius 3.0 mile(s): 33.944774 -84.241065

7000 JIMMY CARTER BLVD, PEACHTREE CORNERS, GA, 30092-5408: Radius Analysis Area Group: Radius 5.0 mile(s): 33.944774 -84.241065