

# Willow Springs

1,500 SF End Cap Space Available

Located at Entrance of Prestige Roswell Country Club



2500 Old Alabama Road, Roswell, GA 30076

- Built in 1987, this is a 50,000 square foot neighborhood center located at the entrance of the prestigious Roswell Country Club
- Only three miles from 400 off Old Alabama Road. Great visibility with a traffic count of 17,400 vehicles per day on Old Alabama Road
- Situated in an affluent market, with a diverse tenant mix servicing local family-oriented residents
- Center provides ample parking with 225 surface spaces; Ratio of 5/1,000 SF



**FOR LEASE**

### Demographics

	1-Mile Radius	3-Mile Radius	5-Mile Radius
Total Population	8,581	86,182	217,205
Population Growth 2010-2017	7.69%	8.35%	8.35%
Projected Growth 2017-2022	5.51%	5.65%	5.64%
Total Households	3,466	31,119	80,672
Average Household Income	\$129,416	\$123,650	\$124,154

### Traffic Count

**17,400** Old Alabama Road

### FOR MORE INFORMATION, CONTACT:

Adam Hale  
404.281.2788 Cell  
678.894.1580 Direct  
ahale@haleretailgroup.com

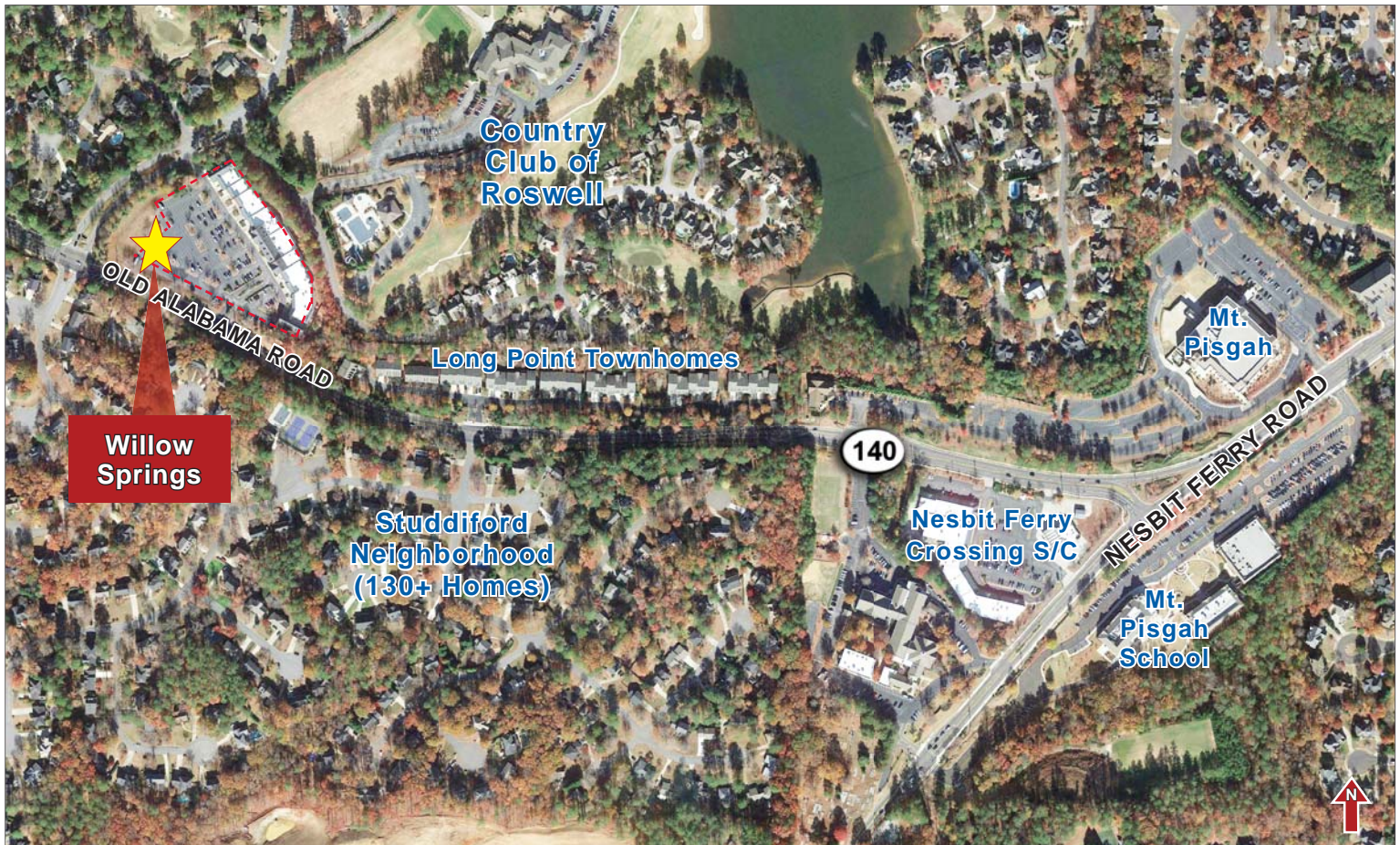
1303 Hightower Trail, Suite 201  
Atlanta, Georgia 30350  
www.haleretailgroup.com  
770.594.1309 Office

# LEASE AT Willow Springs

2500 Old Alabama Road  
Roswell, GA 30076



It is the end cap of the shopping center and is the most exposed space in the shopping center sitting next to Old Alabama Road.



## FOR MORE INFORMATION, CONTACT:

Adam Hale  
404.281.2788 Cell  
678.894.1580 Direct  
ahale@haleretailgroup.com

1303 Hightower Trail, Suite 201  
Atlanta, Georgia 30350  
www.haleretailgroup.com  
770.594.1309 Office

