

2900 South Cobb Drive

20,099 SF Space for Lease

Excellent Location with New Development in the Area



2900 S. Cobb Drive SE, Smyrna, Georgia 30080

- Situated on 4.38 acres, this 45,000 sq. ft. shopping center has easy ingress-egress (4 Points)
- The property features strong visibility along South Cobb Drive as well as a large parking lot with ample parking
- The property is located off South Cobb, and has significant frontage exhibiting 31,200 Vehicles Per Day
- Located less than 6 miles from I-75 and I-285
- Smyrna is changing and growing!



FOR LEASE

Demographics

	1-Mile Radius	3-Mile Radius	5-Mile Radius
Total Population	12,808	82,888	232,989
Population Growth 2000-2015	1%	7%	13%
Projected Growth 2015-2020	4%	5%	6%
Total Households	5,025	33,913	97,578
Average Household Income	\$55,480	\$66,398	\$72,862
Bachelor's Degree or Above	26%	36%	42%

Traffic Count

31,200 South Cobb Drive SE

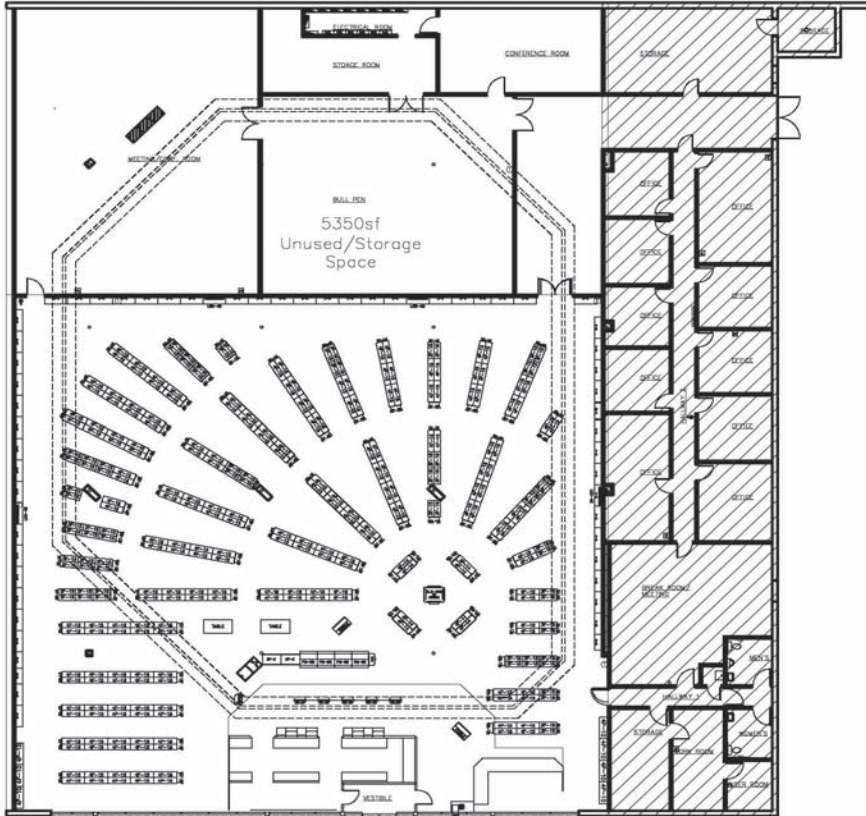
FOR MORE INFORMATION, CONTACT:

Adam Hale
404.281.2788 Cell
678.894.1580 Direct
ahale@haleretailgroup.com

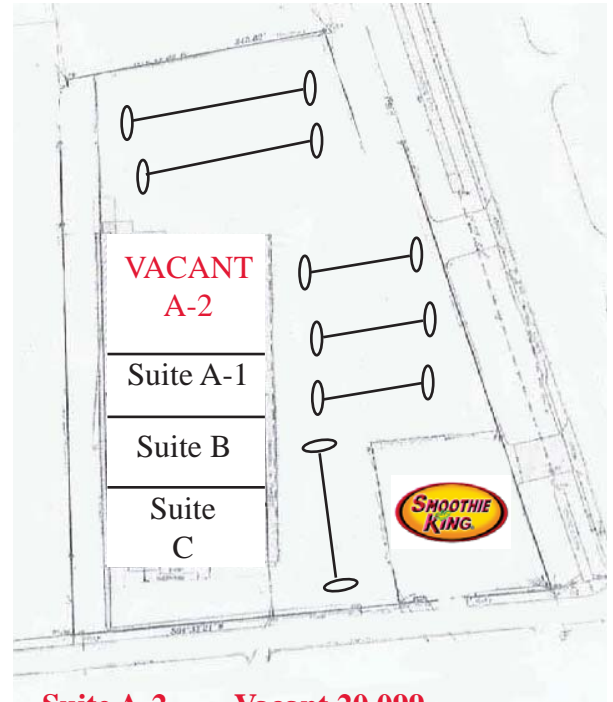
1303 Hightower Trail, Suite 201
Atlanta, Georgia 30350
www.haleretailgroup.com
770.594.1309 Office

LEASE AT 2900 South Cobb Drive SE

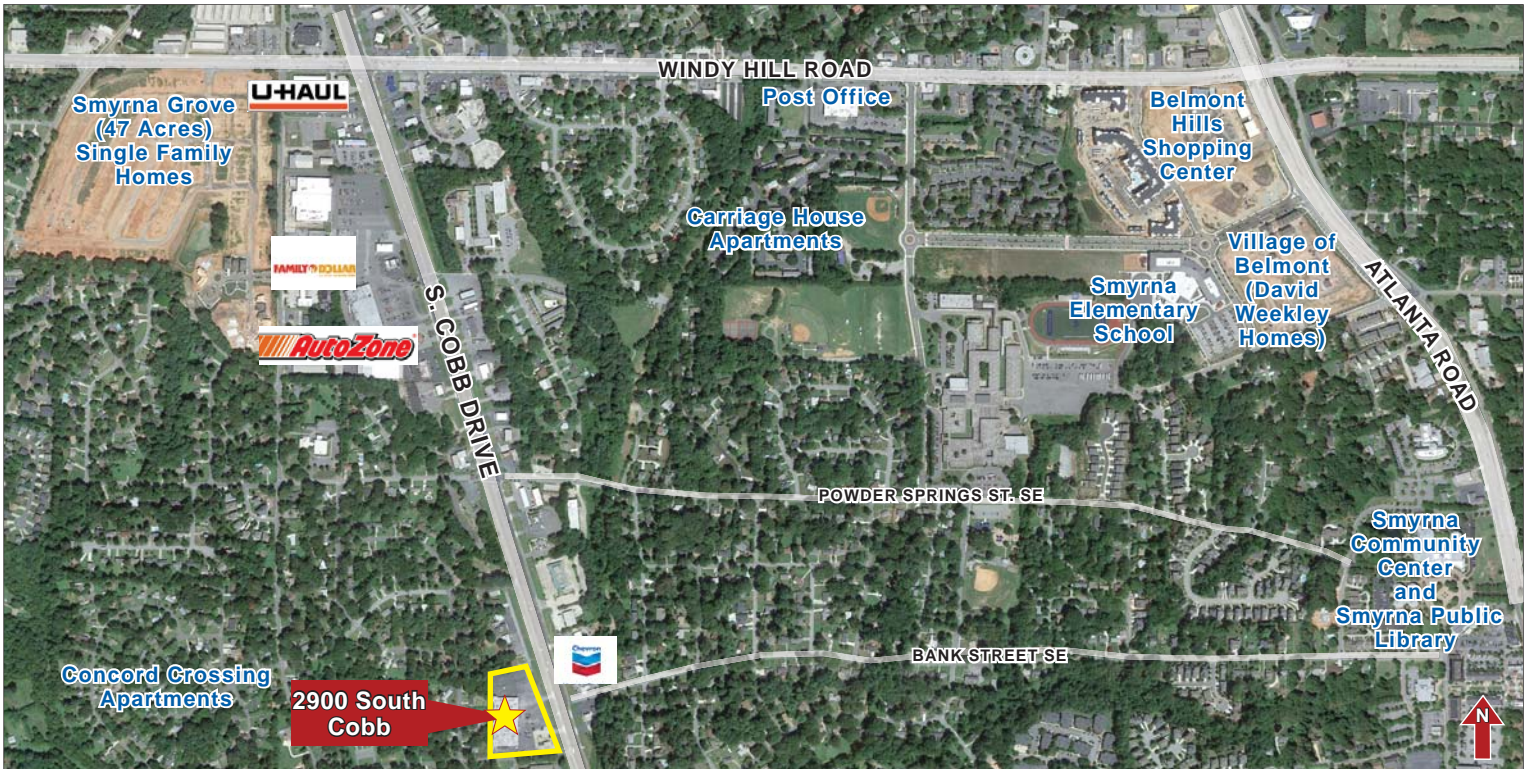
Smyrna, Georgia 30080



SUITE A-2 FLOOR PLAN



- | | |
|------------------|----------------------|
| Suite A-2 | Vacant 20,099 |
| Suite A-1 | Kool Smiles |
| Suite B | Napa Auto Parts |
| Suite C | Aarons |



FOR MORE INFORMATION, CONTACT:

Adam Hale
404.281.2788 Cell
678.894.1580 Direct
ahale@haleretailgroup.com

1303 Hightower Trail, Suite 201
Atlanta, Georgia 30350
www.haleretailgroup.com
770.594.1309 Office



The information herein was obtained from sources deemed reliable and, while believed correct, is offered subject to errors, price changes, and prior sale or withdrawal without notice.